



Pushing Performance
Since 1945

Carrier_BT807042_SOT23-3_v LCP

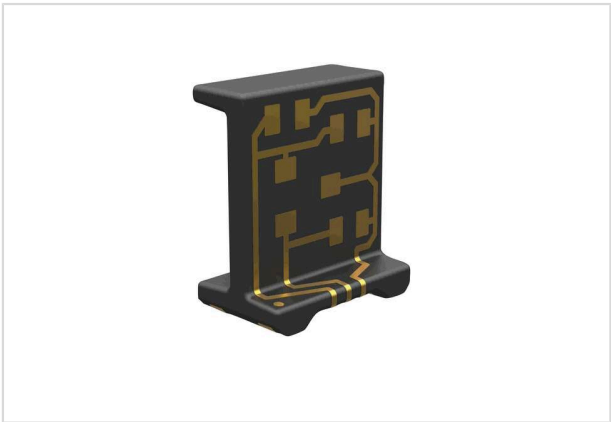


Image is for illustration purposes only. Please refer to product description.

Part number	78 01 030 0006
Specification	Carrier_BT807042_SOT23-3_v LCP
HARTING eCatalogue	https://harting.com/78010300006

Identification

Category	Surface Mount Device
Series	3D-MID
Element	Carrier for electronic components
Specification	Interconnection
Features	Other materials or trace layouts on request!

Version

Fixing	PCB assembly (SMD)
Pack contents	Tape & reel 1200 pieces on reel Lower quantities available on request!

Technical characteristics

Operating temperature	-40 ... +125 °C
Storage temperature	-40 ... +125 °C

Material properties

Material	Liquid crystal polymer (LCP)
Surface (contacts)	Au (≥ 0.05 µm) over Ni (≥ 4 µm) over Cu (5...11 µm)
Length	8 mm
Width	7 mm
Height	4.2 mm
RoHS	compliant
ELV status	compliant



Pushing Performance
Since 1945

Material properties

China RoHS	e
REACH Annex XVII substances	Not contained
REACH ANNEX XIV substances	Not contained
REACH SVHC substances	Not contained
California Proposition 65 substances	Not contained

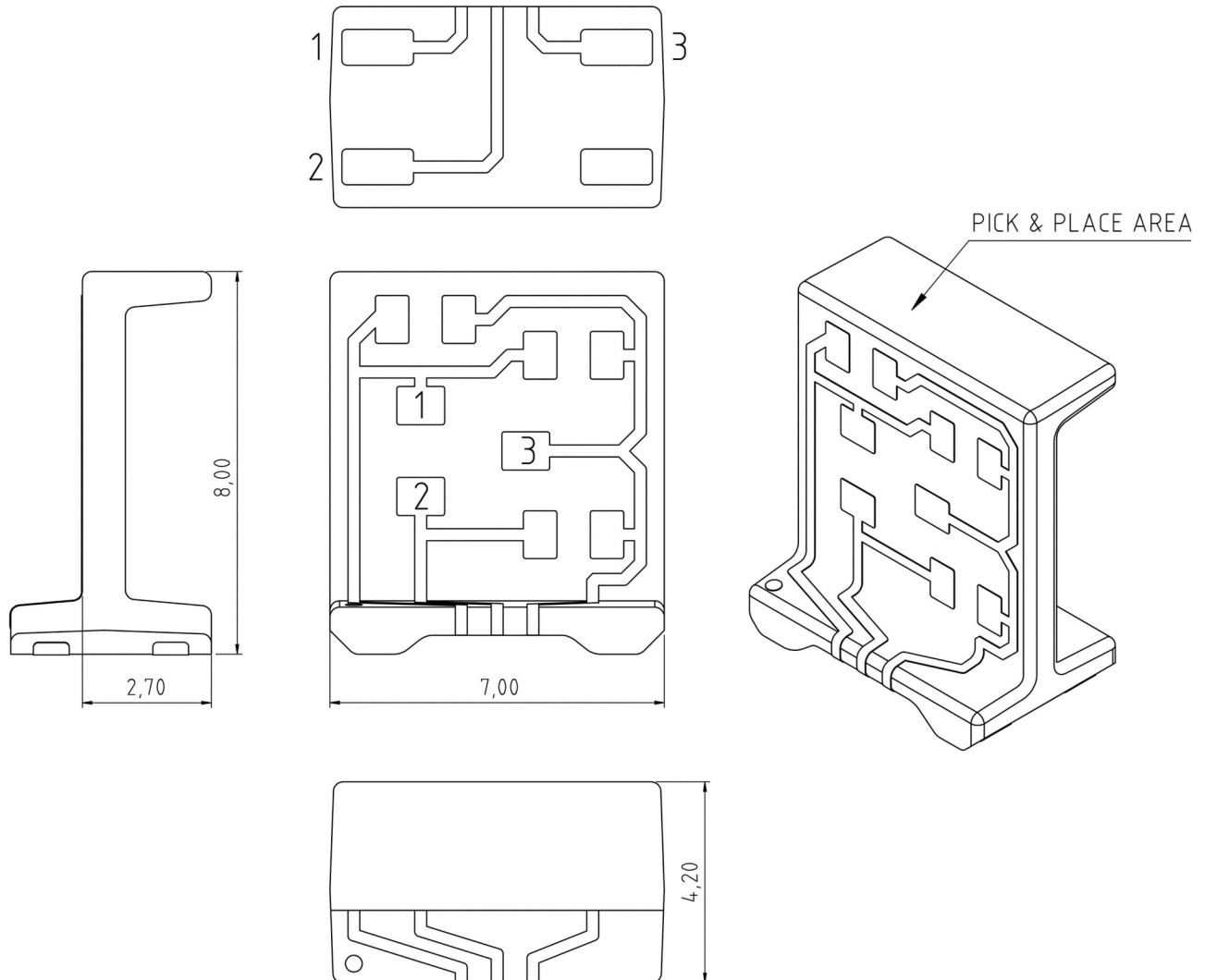
Commercial data

Packaging size	600
Country of origin	Switzerland
European customs tariff number	85340090
GTIN	5713140277397
eCl@ss	27469090 PCB connection technology (other, unspecified)
ETIM	EC002637
UNSPSC 24.0	39121415

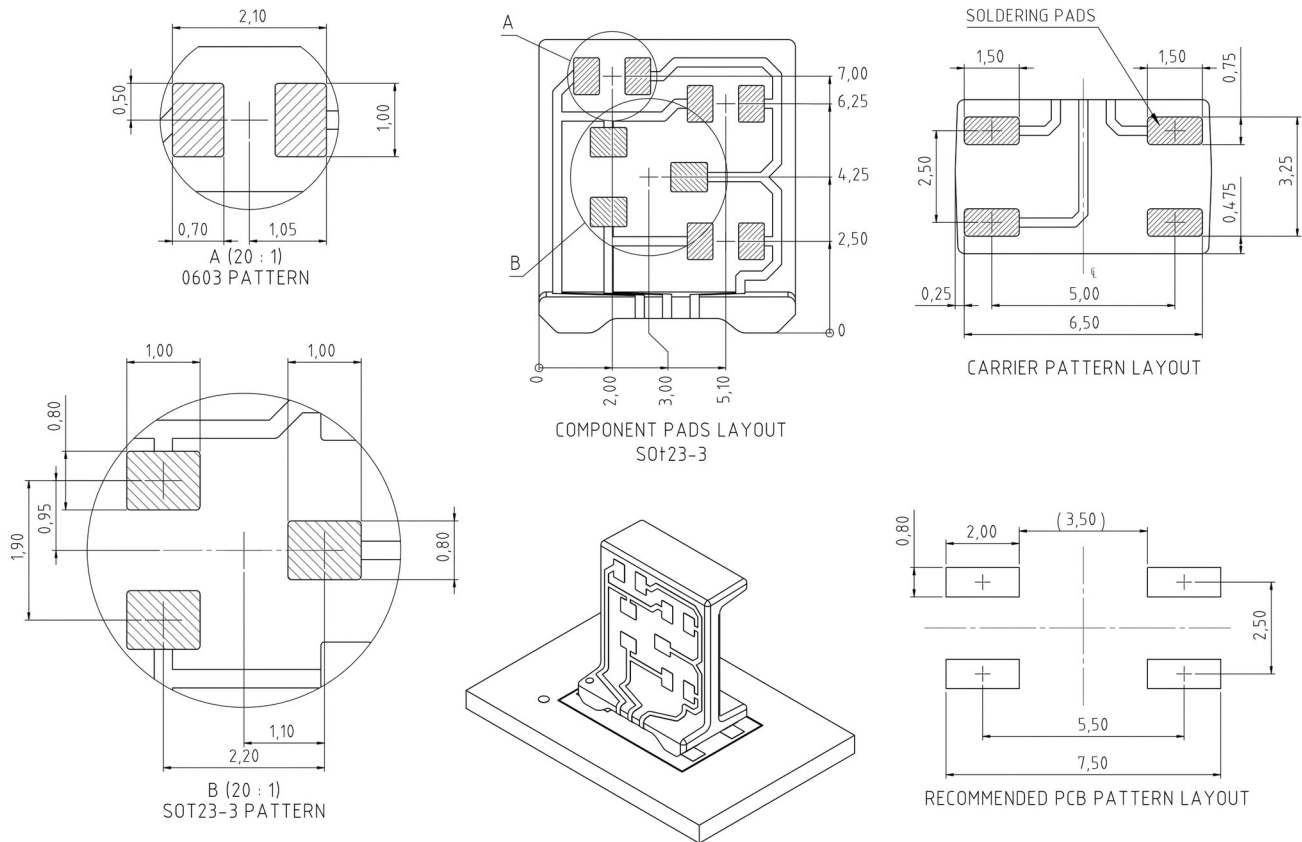
Other materials or trace layouts on request!



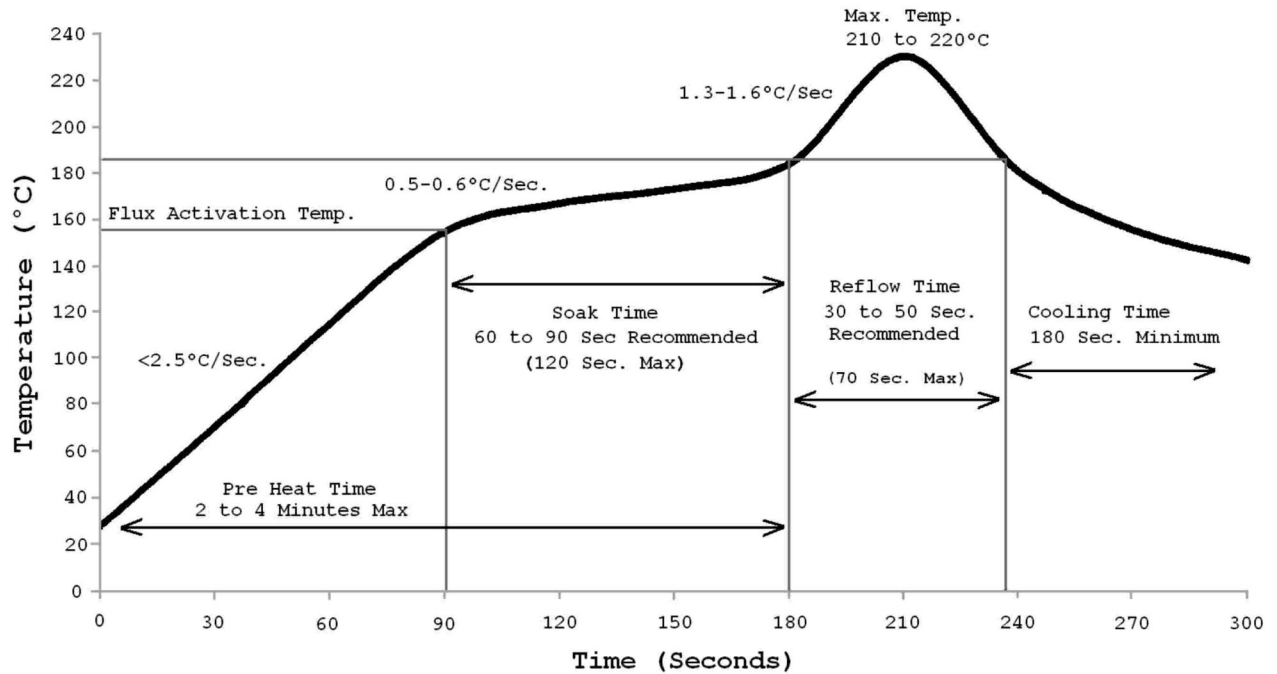
Drawing (dimensions in mm)



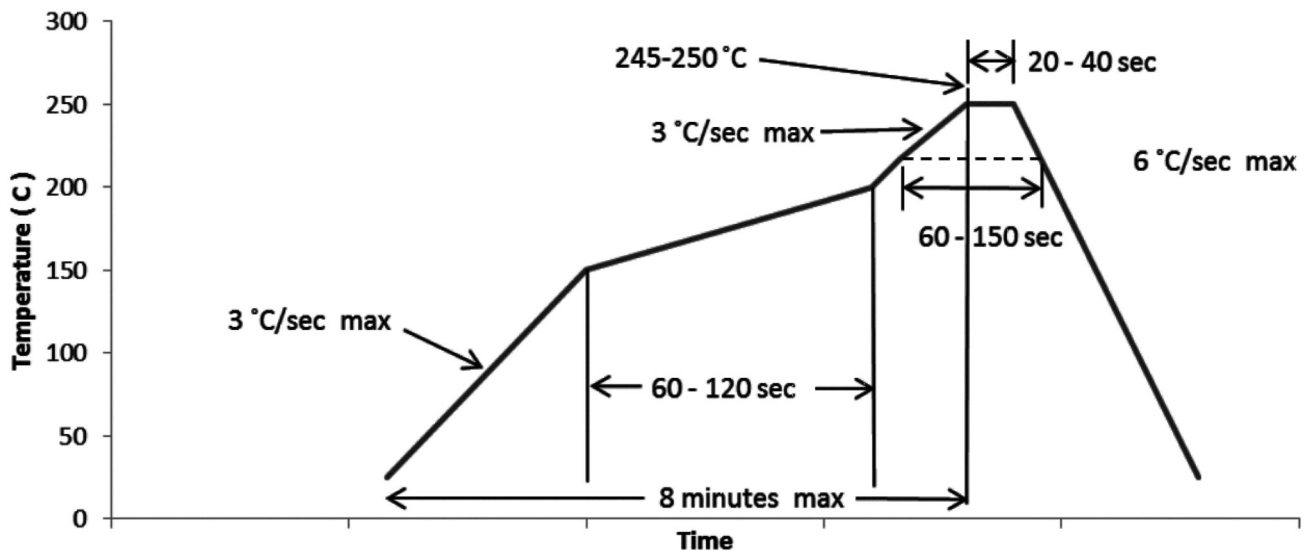
Drawing (dimensions in mm)



Soldering instructions



PB-free soldering profile (J-STD-020C)





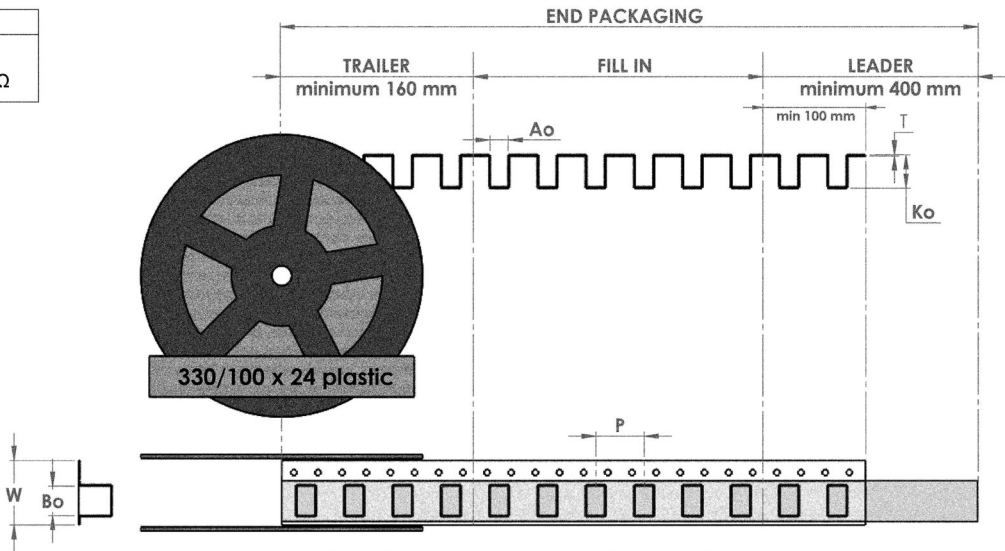
Pushing Performance
Since 1945


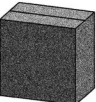
Tape layout & packaging

BT807042

MATERIAL
PS Conductive Black surface resistance $10^{-3}\Omega - 10^{-5}\Omega$

DIMENSIONS	
W	= 24 mm
P	= 12 mm
T	= 0,5 mm
Ao	= 4,5 mm
Bo	= 7,3 mm
Ko	= 8,3 mm
TRAILER	14 cvt
FILL IN	600 pcs
LEADER	34 cvt



PACKING					
		REEL		BOX	PALLET
LENGTH		23m		230m	2,760 m
CAVITIES		1917 cvt		19170 cavities	230040 cavities
PARTS		1200 pcs[2x600]		12000 pcs	144000 pcs
WEIGHT		0,65kg		7,85 kg	109,18 kg
QTY		Single Reel		10 reels/box	12 boxes/pallet
DIMENSION		560/76 x 24 cardboard		39 x 58 x 58 [cm]	80 x 120 x 190 [cm]