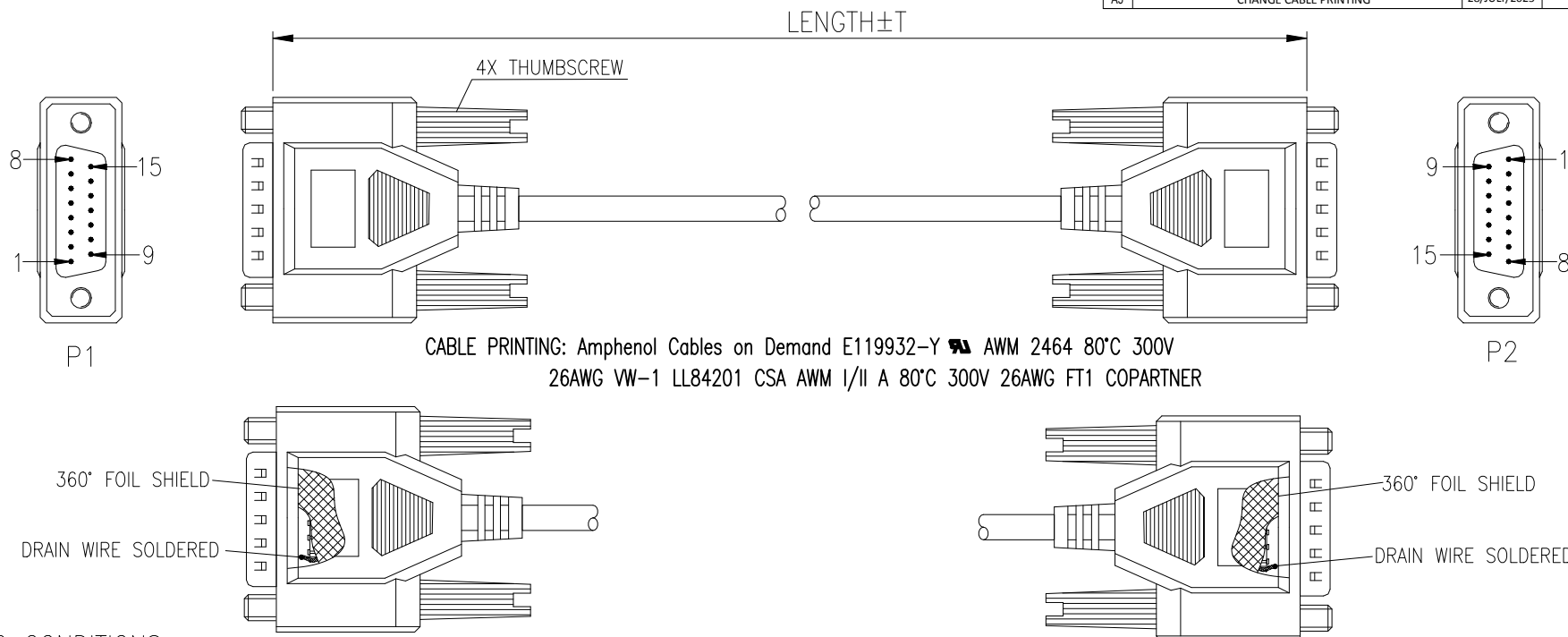


THE INFORMATION CONTAINED IN THIS DRAWING IS THE SOLE PROPERTY OF AMPHENOL CABLES ON DEMAND. ANY REPRODUCTION OR DISCLOSURE, TO THIRD PARTIES, IN PART OR WHOLE, WITHOUT THE EXPRESS WRITTEN PERMISSION OF AMPHENOL CABLES ON DEMAND IS PROHIBITED.

REVISIONS			
REV.	DESCRIPTION	DATE	APPROVED
A3	NEW RELEASE	03/DEC/2021	
A4	Correct the misspellings of bubble and length on page 2	06/DEC/2021	
A5	CHANGE CABLE PRINTING	28/JULY/2025	



NOTE:

1. TESTING CONDITIONS:
 - A: INSULATION RESISTANCE: 10MΩ
 - B: VOLTAGE: DC300V/0.01S
 - C: CONDUCTOR RESISTANCE 2Ω(≤3M), 5Ω(>3M,<10M), 8M≥10Ω
2. SHIELDING: COPPER FOIL TAPE COVER PREMOLD 360°, DRAIN WIRE SOLDER TO CONNECTOR SHELL

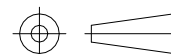
PIN		OUT	
P1	P2	P1	P2
1 ———	1 BLACK	9 ———	9 GREY
2 ———	2 BROWN	10 ———	10 WHITE
3 ———	3 RED	11 ———	11 PINK
4 ———	4 ORANGE	12 ———	12 LIGHT GREEN
5 ———	5 YELLOW	13 ———	13 BLACK/WHITE
6 ———	6 GREEN	14 ———	14 BROWN/WHITE
7 ———	7 BLUE	15 ———	15 RED/WHITE
8 ———	8 PURPLE	SHELL ———	SHELL DRAIN



UNLESS OTHERWISE SPECIFIED
DIMENSIONS ARE IN INCHES
TOLERANCES ARE:

DECIMALS		ANGLE
.X	$\pm X$	$\pm X^\circ$
.XX	$\pm XX$	
.XXX	$\pm XXX$	

THIRD ANGLE PROJECTION



EAR NO.	
---------	--

APPROVALS		DATE
DRAWN	XF	
CHECKED	HYJ	
RESP ENG		
MFG ENG		

Amphenol Cables on Demand

20 VALLEY ST. ENDICOTT, NY 13760

DELUXE DB15M/M MOLDED

SIZE	DWG. NO.
A	

CS-DSDMDB15MM-XXX

REV.
A5

NOTES: UNLESS OTHERWISE SPECIFIED

CAD FILE:

SCALE: N/A	SHEET 1 OF 1
------------	--------------