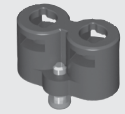
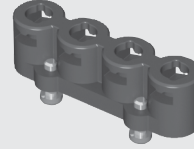


CCH-J-01



CCH-J-04



CCH-J-02

CCH SERIES

HIGH-PERFORMANCE TEST POINTS

SPECIFICATIONS

For complete specifications and recommended PCB layouts see www.samtec.com?CCH

Insulator Material:

Black LCP

Gasket Material:

MIL-DTL-83528C, Type D

Mates with:
RF25S

OTHER SOLUTIONS

- Replacement elastomer gaskets available

Solderless
termination
to PCB

Low cost plastic
housing replaces
expensive machined
metal interfaces

Compression
interface to
the board

Fluorosilicone-based
conductive elastomer provides
excellent grounding

TYPE**J****NUMBER OF POSITIONS****CCH**

= Single position test point

-01

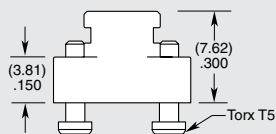
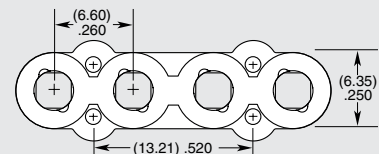
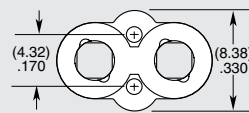
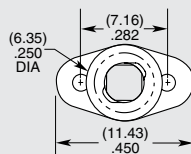
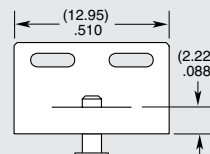
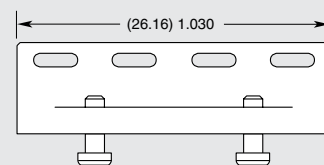
= 1 Position

-02

= 2 Positions

-04

= 4 Positions

**-01****-02****-04**

Note:
Some lengths, styles and
options are non-standard,
non-returnable.