

OIL AND GAS > AUTOMATION & ELECTRICAL SOLUTIONS



molex®



PRODUCTS >



In Cabinet

- Network Interface Cards
- Ethernet Switches
- CIP Safety Software Kits
- SST™ Communication Modules
- PICS Simulation® Software

I/O and Network

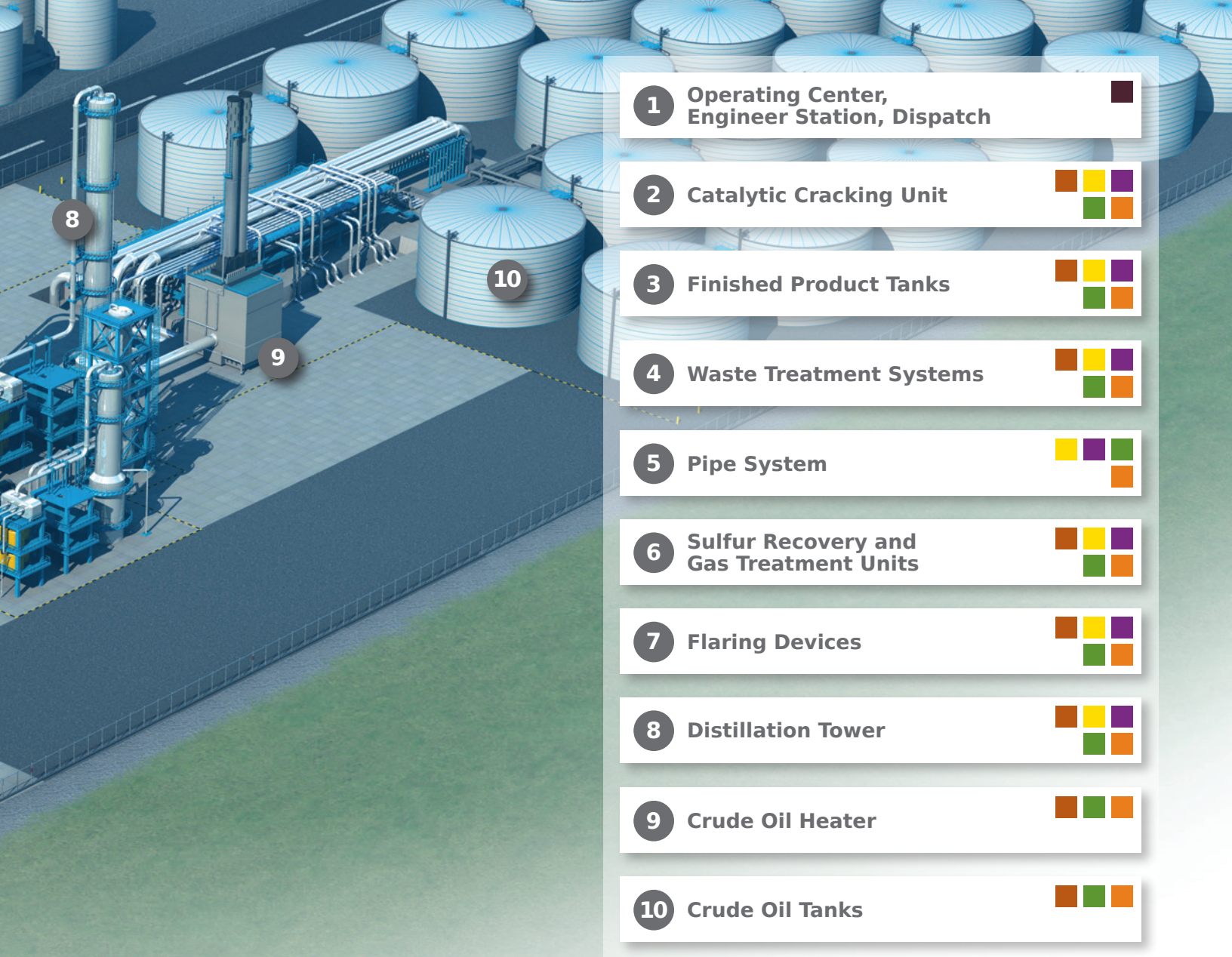
- Harsh I/O IP67 Modules
- Brad® DeviceNet* Cables and accessories
- Brad® Ethernet Solutions
- Brad® PROFIBUS† Solutions

Connectivity

- Brad® Micro-Change® (M12) Connectors
- mPm® DIN Value Connectors
- Brad® Distribution Boxes
- Brad® Mini-Change® Connectors

*DeviceNet is a trademark of Open DeviceNet Vendor Association (ODVA)

†PROFIBUS is a trademark of PNO/PI



1 Operating Center,
Engineer Station, Dispatch

2 Catalytic Cracking Unit

3 Finished Product Tanks

4 Waste Treatment Systems

5 Pipe System

6 Sulfur Recovery and
Gas Treatment Units

7 Flaring Devices

8 Distillation Tower

9 Crude Oil Heater

10 Crude Oil Tanks



Power and Motors

- Brad® Power Connectors
- Brad® M23 Connectors
- GWconnect® Heavy-Duty Cable Connectors

Plant Support

- GFCI Receptacles and Inline Products
- Stainless Steel Strain Relief and Support Grips
- Woodhead® Power Distribution
- Super-Safeway™ and Safeway® Heavy Duty Wiring Devices

Hazardous Duty and Watertite®

- Hazardous Location Handlamps
- Hazardous Location Wide Area Lighting
- Woodhead® Watertite® Wet Location Wiring Devices
- Industrial and Heavy-Duty Cable Reels

PRODUCT INFORMATION

IN CABINET

Network Interface Cards:

- SST™, applicom®, and Direct-Link™ Network Interface Cards (NICs) are intelligent communication solutions connecting various computer bus formats
- Software available for our NICs enables fast integration of industrial communication into a Food and Beverage plant application

Ethernet Switches:

- Managed and unmanaged Brad® Direct-Link® Ethernet switches provide reliable, robust performance across complex networks in a wide range of control and monitoring applications
- Available in DIN rail mount IP30 styles and machine mount IP67 versions

CIP Safety Software Kits:

- Meets IEC 61508, SIL3 standard
- Approved by TUV and complies with the CIP Safety Edition 2.1 ODVA standard

SST™ Communication Modules:

- Available for various industrial networks and fieldbus including Modbus Serial and TCP; PROFIBUS®-DP and AS-interface
- Add-on Profiles (AOP) for ControlLogix® modules

I/O and NETWORK

Harsh I/O IP67 Modules:

- Machine mount I/O module which reduces cabinet space and wiring costs
- Brad® Ultra-Lock® (M12) connection system provides fast and secure connections
- Support numerous fieldbus connectivity such as DeviceNet†, PROFIBUS®-DP, EtherNet/IP

Brad® DeviceNet† Cables and Accessories:

- Plug-and-play simplicity at power up for fast and easy integration
- Low-cost-real time, device level bus architecture connecting sensors and actuators

Brad® PROFIBUS® Solutions:

- DeviceNet, PROFIBUS®, EtherNet I/P, ProfiNet and other available protocols
- Variety of receptacles and cordset options including accessories

CONNECTIVITY

Brad® Micro-Change® (M12)

Connectors:

- IP67 compliant
- Available with push-to-lock sealing

mPm® DIN Value Connectors:

- Conforms to EN 175301-803
- IP67 sealing properties
- Used with solenoid valves in all hydraulic and pneumatic applications

Brad® Distribution Boxes:

- Compact alternative to junction boxes
- Radial O-ring provides IP67 seal (IP69K seal available)

Brad® Mini-Change® Connectors:

- 2-19 pole
- IP67 sealing

POWER and MOTORS

Brad® Power Connectors:

- Alternative to hard wiring using modular components for fast and easy installation
- 3 or 4 pole, 32A/600NFPA 79-2014 compliant and UL 2237 listed

Brad® M23 Connectors:

- Provide quick-connect to servo motors
- Power and signal combinations available
- Small connector size for tight spaces

GWconnect® Heavy-Duty Cable Connectors:

- Wide array of pin counts and power capabilities
- IP67 Seal
- Metal housings for durability

PLANT SUPPORT

GFCI Receptacles and Inline Products:

- Plug-connector type, flying lead, box-style products available
- Available in 15, 20 or 30A, 120 or 240V
- Weatherproof, NEMA type 3R, 4X, 6 and 6P ratings available

Stainless Steel Strain Relief and Support Grips:

- Strain-relief grips provide relief for cords or flexible conduit on plugs, connectors and enclosures on portable equipment
- Stainless steel mesh support grips are designed to withstand the most abusive plant environments

Woodhead® Power Distribution:

- Pre-wired solutions
- Standard components and replacement parts
- Custom-built products
- Single or duplex receptacles designed for wet, abusive environments
- Available in 15, 20 or 30A, 120 or 240V
- Weatherproof, NEMA type 4, 4X, 6 and 6P ratings available

Super-Safeway™ and Safeway® Heavy Duty Wiring Devices:

- Rubber construction
- Self-aligning blades
- Wiring screw terminals backed out
- Stainless-steel assembly screw

HAZARDOUS DUTY and WATERTITE®

Hazardous Location Handlamps:

- Lights are designed to stringent specifications of NEC Article 500 and are agency listed for safety in classified locations

Hazardous Location Wide Area Lighting:

- Rugged cast aluminum enclosure with unique rubber lens gasket assembly provides superior strength and durability
- Four, 20W LED arrays that resist breakage during rough handling
- Operating range of -40° C to +40° C

Woodhead® Watertite® Wet Location Wiring Devices:

- Neotex® Rubber construction for ultimate temperature, chemical, oils and abrasion resistance
- IP67 rated for high-pressure hose down application up to 1,000 PSI
- Self-aligning blade contacts provide lower operating temperatures yielding longer connector life

Industrial and Heavy-Duty Cable Reels:

- Containerized mainspring
- NEMA-3 and NEMA-4 enclosure
- Anti-lock-out ratchet system
- Modular collector rings

*ControlLogix is a registered trademark of Rockwell Automation

†DeviceNet is a trademark of Open DeviceNet Vendor Association (ODVA)

*PROFIBUS is a trademark of PNO/PI

MOLEX PROVIDES SOLUTIONS > FOR OIL AND GAS AUTOMATION PLANT INFRASTRUCTURES GLOBALLY.



Optimizing oil and gas production processes through Molex's automation and electrical product lines; Brad[®], Woodhead[®], SST[™] and GWconnect[®], minimizes cost and ensures safety. From heavy-duty connectors that withstand the most hazardous environments to LED lighting that reduces downtime and increases productivity, our team of highly-skilled industrial experts design and develop innovative solutions every day. Molex's industrial communication, connectivity, power, control and plant electrical solutions deliver the safety, reliability and performance needed in the oil and gas industry.

Brad[®]
Woodhead[®]
SST[™]
GWconnect[®]

Get customized insights at: <http://www.molex.com/industry/industrial.html>