



Smart Lighting Wireless Programming Solution

- XLC/XLN-NFC Series

Technical Service Center /Weiqiang Wu

RMA@meanwell.com.cn

The specifications of LED lighting fixtures are very diverse, manufacturers of LED power supplies typically employ hardware methods to alter the reference voltage value of the current detection circuit (using a dip switch or a variable resistor, for instance) to set the current requirement. However, neither of these methods allows for subtle and intuitive current adjustments. In order to meet the needs of customers who require precise and rapid current setting, MEAN WELL's products combine NFC (Near Field Communication) technology to propose an intelligent wireless programming solution.

MEAN WELL has recently introduced a new generation of XLN/XLC-NFC series, users can use the smart devices with NFC function to quickly set the output current through close-range induction on the MEAN WELL APP, catering to different conditions when the product lacks AC input in lighting applications.

Furthermore, the XLN/XLC-NFC models also feature dimming functions such as 3-in-1 (0~10V, PWM signal, and resistance) digital light adjustments and DALI-2, which can be combined with various brands of dimmers available in the market or paired with the MEAN WELL DLC-02 digital lighting controller, making it highly suitable for multi-scenario lighting applications.



Fig 1. NFC Diagram

The following is a brief explanation of how to set up the output current through the NFC function :

1. In MEAN WELL APP → Menu in the upper left corner → Installation Manual /APP
→ Power NFC。

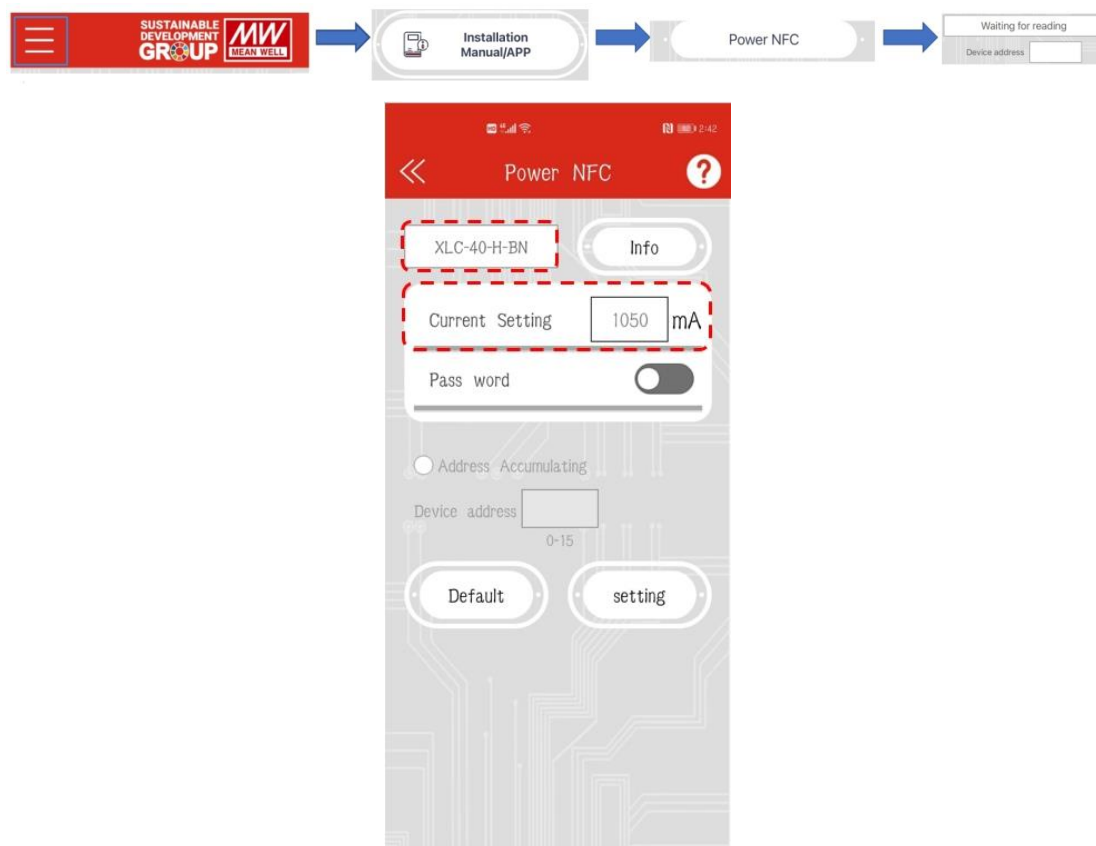


Fig 2. NFC Interface

2. According to the operation process in Figure 3, set the output current to 733mA.

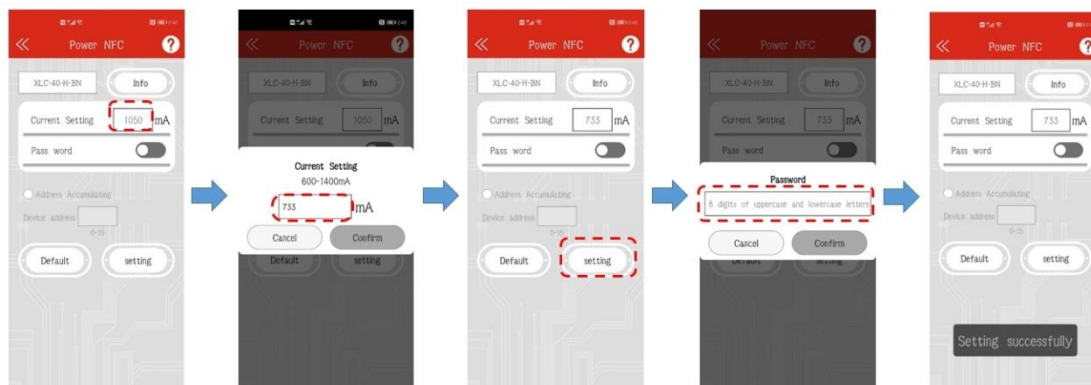


Fig 3. Current Setting Process

3. Finally, you can confirm whether the output current is set successfully in the "Message" option.



Fig 4. Current Setting Information



明緯企業股份有限公司
MEAN WELL ENTERPRISES CO., LTD.

TEL: 886-2-2299-6100
FAX: 886-2-2299-6200
E-mail: info@meanwell.com
<http://www.meanwell.com.tw>

24891 新北市五股區五權三路28號

No.28, Wuquan 3rd Rd., Wugu Dist., New Taipei City 24891, Taiwan (R.O.C.)

For related product and application requirements, please directly contact MEAN WELL dealers or MEAN WELL technical personnel. Please continue to pay attention to the MEAN WELL Online Exhibition online courses on related products and solution.

更多、更完整的电源解决方案
都在「明纬线上展览馆」▶▶

