

Mini-Fit Σ

- ✓ 4.2mm Pitch, 13 Amps
- ✓ 600 Volts
- ✓ Slim width design
- ✓ V0/Glow-Wire Combo Resin



What's New With the FiT's?

All with the same reliable features:

- ✓ WTW, WTB, BTB
- ✓ Positive Lock
- ✓ Scoop Proof
- ✓ Multiple Points of Contact
- ✓ Polarized and Keyed
- ✓ Fully Isolated Contacts

Micro-Fit+

- ✓ 3.0mm Pitch, 12.5 Amps
- ✓ Reflow Capable
- ✓ 40% Lower Engage Force
- ✓ V0/Glow-Wire Combo Resin



Mega-Fit WTW, TPA and Backshells



- ✓ 5.7mm Pitch, 23 Amps
- ✓ Six independent contact points
- ✓ Free Hanging & Panel Mount
- ✓ More power per linear and square millimeter
- ✓ TPA and Backshells available on WTW and WTB



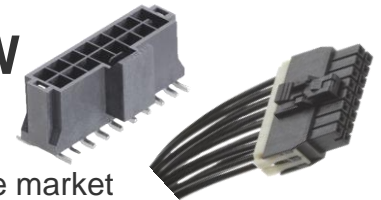
Terminal Position Assurance (TPA)

- ✓ Ensures crimp terminals are fully engaged and prevents terminals from backing out in high vibration applications.

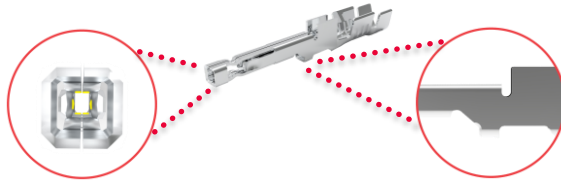


Nano-Fit SMT and WTW

- ✓ 2.5mm Pitch
- ✓ Reflow Capable
- ✓ Smallest fully isolated headers on the market
- ✓ Terminal design allows 6.5 Amps and 4 points of contact



Ultra-Fit Tangless Terminal



6 Independent Contact Points

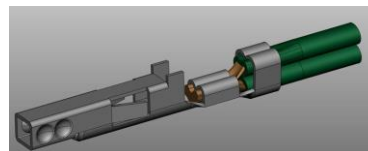
Provides multiple points of contacts on six independent points per terminal

Enhanced Tangless Design

The terminal locking mechanism is incorporated in the receptacle housing, reducing the risk of damage

New Terminal Options Available:

- ✓ Double Crimp
- ✓ Operating Temp of 125°C
- ✓ Mating Cycles up to 1500



molex