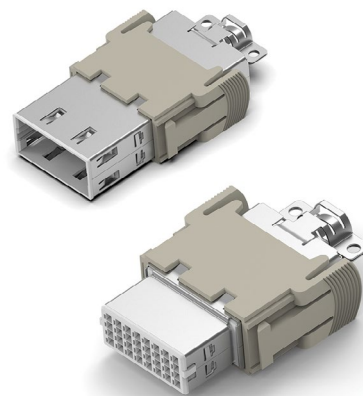


# INTRODUCING

# HDC HMN EMC

# MODULE INSERT

- Ensure signal performance together with power
- Size reduction for signal transmission solution



TE Connectivity (TE) EMC Shielding Modular Insert is designed to provide EMC protection solutions in modular systems.

The existing solution needs two connectors to transition power and signal separately, with new HMN shielding modular insert. Which enables the customer to combine signal and power in one modular system. This is also beneficial for our customer helping to save space, reduce the cost and avoid additional power noise.

## APPLICATIONS

- Semi conductor
- Machinery
- Robotic
- Wind power
- Warehouse automation

## ELECTRICAL

- 2.2A 32V 0.8KV 3
- EMC shielding

## MATERIALS

- As specified on the product drawing

## MECHANICAL

- Acc. to EN 61984 connectors. Safety requirements and tests

## LEARN MORE

- [HDC HMN EMC module product page](#)
- [HDC HMN EMC module flyer](#)
- [HDC HMN EMC module parts list](#)

## FEATURES

- EMC shielding
- Large position (32P) per module
- Small quantity components design
- Reliable HDC dynamic contact

## BENEFITS

- Reduce the operation cycle time
- Improved operational efficiency

## STANDARDS

- **EN 61984:** Connectors - safety requirements and tests
- **IEC 60068:** Environmental testing
- **IEC 60512:** Connectors for electronic equipment - test and measurements
- **IEC 60529:** Degrees of protection provided by enclosures (IP Code)
- **IEC 60664-1:** Insulation coordination for equipment within low-voltage systems (Part 1)
- **EN 61373:** Railway application - rolling stock equipment - shock and vibration test
- **ISO 6988:** Metallic and other non-organic coatings - Sulfur dioxide test with general condensation of moisture

## SPECIFICATIONS

- [108-137507](#)