

Datamate Metal Backshells

Wire-to-Board connector accessories

Connector enhancement and new build solutions

Datamate Metal Backshells are designed to provide EMI / RFI screening. The female cable versions include attachment features for screening braid, providing strain relief and mechanical protection for additional performance improvements.

These fully machined metal backshells are made from aluminium alloy with electroless nickel plating. They suit most applications, and offer significant cost savings over comparable Micro-D options.

Features and Benefits	
Cable-to-board and panel mount options	Wide range of products to support a broad spectrum of customers and applications
Datamate Metal backshells are machined from aluminium alloy billets	This construction ensures reliability, strength and performance
Can be used with J-Tek or Mix-Tek Datamate Connectors	Sold as accessories to further enhance connector performance levels
Made-to-order	Low MOQ's and fast turnaround
Single large elliptical straight cable entry port for cable connectors	Accepts signal, coax and power cable for varied requirements
Braid retention feature at cable entrance	Suitable for metallic and non-metallic conductive braids
Overall screen termination by stainless steel micro-band	Ensures electrical and mechanical longevity and security

Key Applications	
Aviation	Avionics, Aircraft Infotainment, Radar
Motorsport and Transport	Navigation, GPS, Tracking
Energy	Oil, Gas and Renewable Sources
Industrial	Drives and Controls, Robotics
Space	Satellites, CubeSat, Launch Systems, Radar and Communications
Defence and Security	Wi-Fi Antennas, Routers, Radio Communications and Radar



Metal Backshell applied to J-Tek female crimp connector

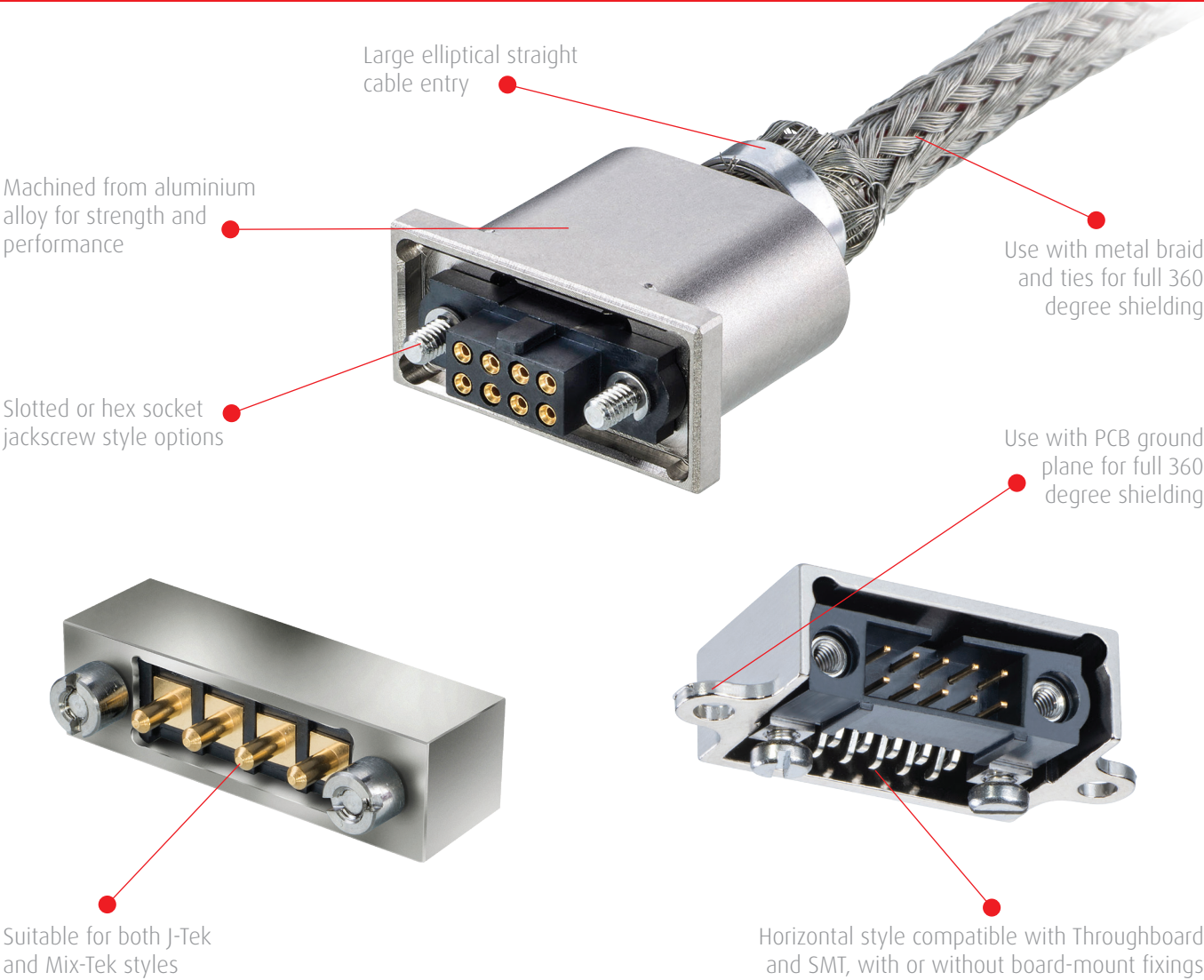


J-Tek Male panel mount crimp connector



J-Tek Male horizontal PCB mount connector

Product Features



Specifications				
Electrical	Mechanical		Physical	
RF Attenuation = 10kHz to 400MHz @ >30dBs in general accordance with MIL STD 1377 (1971). Tests were performed when connectors were mated.	No. of Operations	500	Packaging	M80-94xxx02 = 1 kit per bag
	Temperature Range	-55°C to +125°C		M80-906xx02 = 1 shell per bag
	Circlip Tool	Z80-300	Backshells	Aluminium Alloy, Nickel plated
			Jackscrews	Stainless steel
Circlips			Stainless steel	
Refer to partnered connector for other electrical specifications				Band-it Tie

How To Order

Female Cable Backshells

M80 - 94 X XX 02



Supplied with jackscrews and retaining clips (not shown)

JACKSCREW HEAD STYLE

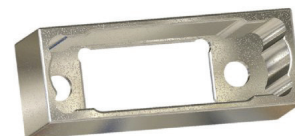
5	Slotted head
6	Hex Socket head

SIZE

See Table Below

Male Vertical/Panel Mount Backshells

M80 - 906 XX 02



SIZE

See Table Below

Male Horizontal Backshells

M80 - 904 XX 02



SIZE

See Table Below

Micro-Band (for securing cable braid)

M80 - 94 X 0000



LENGTH

7	206.8mm
8	362.0mm

Size Table (see Order Codes above)

Size	Total No. of Signal contacts (J-Tek)	No. of Power or Coax contacts (Mix-Tek)
04	4	
06	6	
08	8	2
10	10	
12	12	3
14	14	
16	16	4
18	18	
20	20	5
22	22	
24	24	6
26	26	

Size	Total No. of Signal contacts (J-Tek)	No. of Power or Coax contacts (Mix-Tek)
28	28	7
30	30	
32	32	8
34	34	
36	36	9
38	38	
40	40	10
42	42	
44	44	11
46	46	
48	48	12
50	50	

Check www.harwin.com for availability in all styles



Harwin Europe (Global Headquarters)

Portsmouth, Hampshire, UK

E: mis@harwin.co.uk

T: +44 (0)23 9231 4545

Harwin Inc (Americas)

New Albany, Indiana, USA

E: mis@harwin.com

T: +1 603 893 5376

Harwin Asia Pte Ltd (Asia, Australasia)

Singapore

E: mis@harwinasia.com

T: +65 6 779 4909