

# MCU-LINK

## Debug Probe

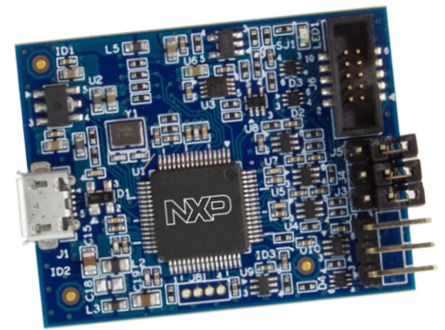
### Product Overview

06-30-2021

For the most up-to-date information, visit [www.mouser.com](http://www.mouser.com) or the supplier's website.

## Description

NXP Semiconductors MCU-Link Debug Probe is a powerful and cost-effective debug probe that can be used seamlessly with MCUXpresso Integrated Development Environments (IDEs). MCU-Link Debug Probe also includes a USB to UART bridge feature (VCOM) that provides a serial connection between the target MCU and a host computer. This debug probe is also compatible with third-party IDEs that support CMSIS-DAP protocol. The MCU-Link Debug Probe is based on the LPC55S69 microcontroller that features a high-speed USB interface for high-performance debug. MCU-Link is compatible with macOS, Linux, and Windows 10. A free utility from NXP provides an easy way to install firmware updates.



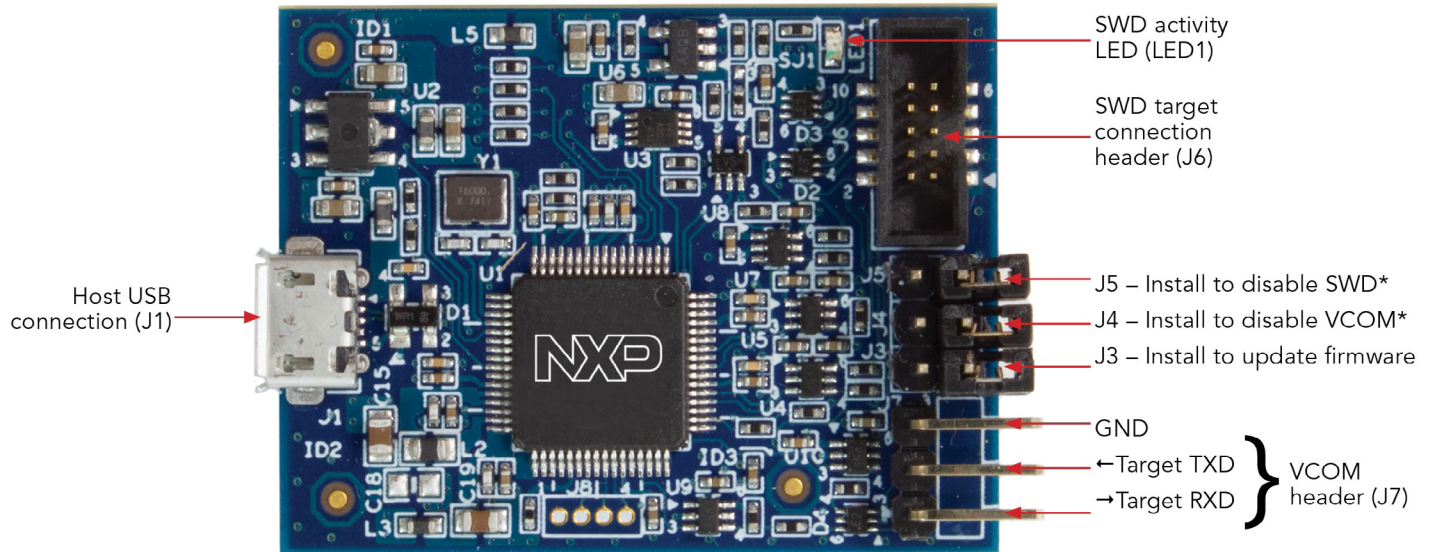
## Features

- LPC55S69 dual Arm® Cortex®-M33 microcontroller running at up to 150MHz
- Target USB to UART bridge connectivity
- SWD activity LED user interface
- Simple firmware update via USB
- SWD/JTAG debug interface to target via 10-pin Core Sight connector
- SWO support for profiling, interrupt tracing, and low overhead data access

## Kit Contents

- MCU-Link debug probe
- Target debug connector
- VCOM connector cable
- Spare jumpers

## MCU-Link Debug Probe Block Diagram



\*J4 and J5 jumper headers may not be installed on all boards.

## Mouser Part Number(s)

[View Part](#)

To learn more, visit

<https://www.mouser.com/new/nxp-semiconductors/nxp-mcu-link-debug-probe/>