



ACCELERATE®

(0.635 mm) .025"

# SLIM BODY CABLE

ARC6-08-03.0-LU-LD-2-1

ARC6-16-03.0-LU-LU-3-1

ARC6 SERIES

## SPECIFICATIONS

For complete specifications and recommended PCB layouts see [www.samtec.com?ARC6](http://www.samtec.com?ARC6)

- Cable:** 34 AWG Eye Speed® ultra low skew twinax cable
- Signal Routing:** 100 Ω Differential
- Insulator Material:** LCP
- Terminal Material:** Copper Alloy
- Cable Insulator:** THV
- Operating Temp Range:** -40 °C to +125 °C
- RoHS Compliant:** Yes

## PROCESSING

**Lead-Free Solderable:** Yes

**Mates with:** ARF6

Direct attach technology

**EYE SPEED**  
CABLE

34 AWG Eye Speed® ultra low skew twinax cable

Rugged metal latching

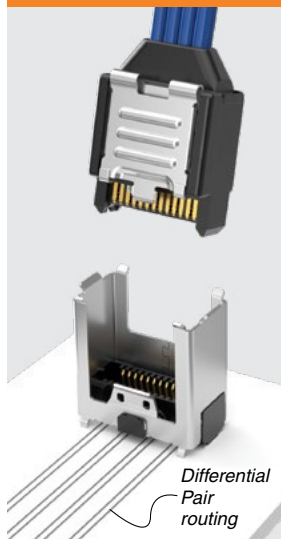
High-density 2-row design

PAM4	NRZ
56 Gbps	28 Gbps

## IN DEVELOPMENT

- -24 pairs

## APPLICATION

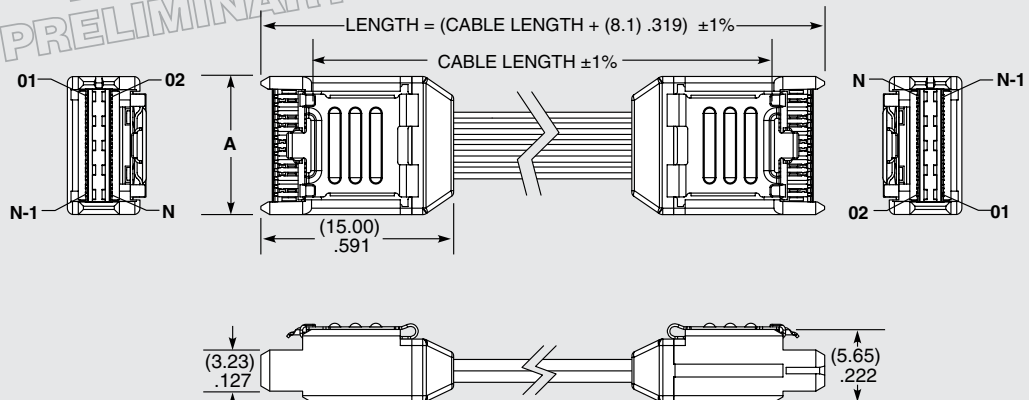


**Notes:**  
Cable lengths longer than 40.00" (1 meter) are not supported with S.I. test data.  
Some lengths, styles and options are non-standard, non-returnable.

ARC6	NO. OF PAIRS	CABLE LENGTH	END 1	END 2	WIRING OPTION	CABLE TYPE
	-08 = 8 Pairs	"XX.X" = Length in Inches 03.0" (76.2 mm) minimum	-LU = Latch Up	-LU = Latch Up  -LD = Latch Down	-2 = Pin 1 to Pin 2 (End 2 -LD option only)  -3 = Pin 1 to Pin N-1 (End 2 -LU option only)	-1 = 34 AWG 100 Ω Eye Speed®
	-16 = 16 Pairs					
	-24 = 24 Pairs					

NO. OF PAIRS	A	N	N-1
-08	(10.90) .429	26	25
-16	(18.52) .729	50	49
-24	(26.14) 1.029	74	73

-24 PAIRS PRELIMINARY



ARC6-08-XX.X-LU-LU-3-1 SHOWN

Due to technical progress, all designs, specifications and components are subject to change without notice.

[WWW.SAMTEC.COM](http://WWW.SAMTEC.COM)

All parts within this catalog are built to Samtec's specifications. Customer specific requirements must be approved by Samtec and identified in a Samtec customer-specific drawing to apply.