



ACCELERATE®

(0.635 mm) .025"

ARF6-08-S-RA-TR



ARF6-16-S-RA-TR

ARF6-RA SERIES

RUGGED RIGHT-ANGLE SLIM SOCKET

SPECIFICATIONS

For complete specifications
see www.samtec.com?ARF6-RA

Insulator Material:

LCP, Black

Contact Material:

Copper Alloy

Shield Material:

Phosphor Bronze

Plating:

Au or Sn over

50 μ " (1.27 μ m) Ni

Operating Temp Range:

-40 °C to +125 °C

Mates with:
ARC6

PAM4

56
Gbps

NRZ

28
Gbps

Rugged metal latching
and shielding

8, 16 and 24 pair
configurations

Rugged through-hole
reflowable weld tabs

IN DEVELOPMENT

- -24 pairs

ARF6

NO. OF
PAIRS

PLATING

RA

"X"R

-08
= 8 Pairs

-16
= 16 Pairs

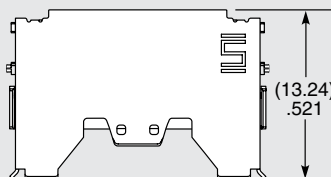
-24
= 24 Pairs

-S
= 30 μ " (0.76 μ m) Gold on contact area,
Matte Tin on tail

-TR
= Tape & Reel

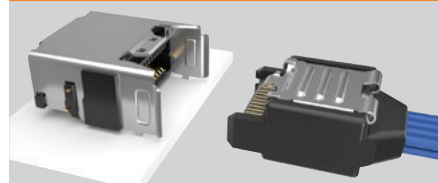
-FR
= Full Reel
Tape & Reel
(must order max.
quantity per reel;
contact Samtec for
quantity breaks)

-24 PAIRS
PRELIMINARY



NO. OF PAIRS	A	B	C	N	N-1
-08	(12.46) .491	(7.62) .300	(11.30) .445	26	25
-16	(20.08) .791	(15.24) .600	(18.92) .745	50	49
-24	(27.70) 1.091	(22.86) .900	(26.54) 1.045	74	73

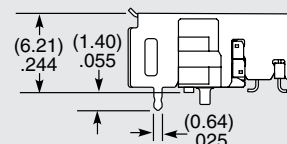
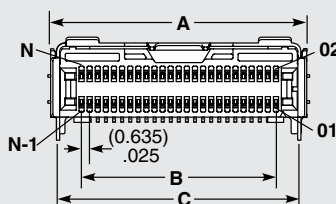
APPLICATION



Notes:

Tape & Reel packaging
is standard.

Some sizes, styles and
options are non-standard,
non-returnable.



ARF6-16-X-RA SHOWN

Due to technical progress, all designs, specifications and components are subject to change without notice.

WWW.SAMTEC.COM

All parts within this catalog are built to Samtec's specifications.

Customer specific requirements must be approved by Samtec and identified in a Samtec customer-specific drawing to apply.