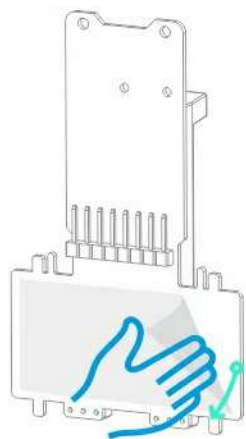
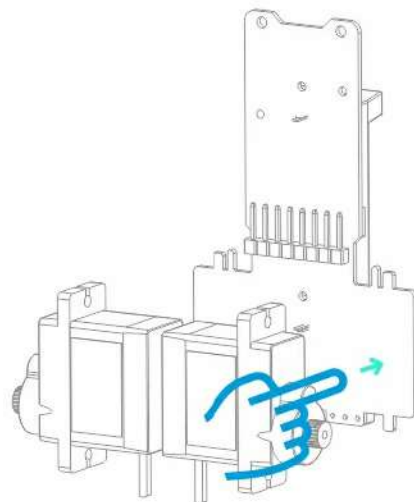


①



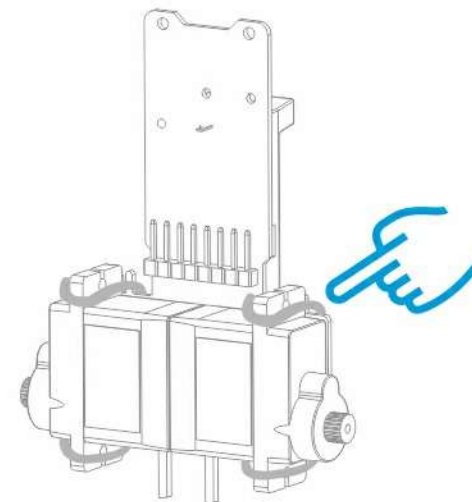
Remove the adhesive tape on the main board.

②



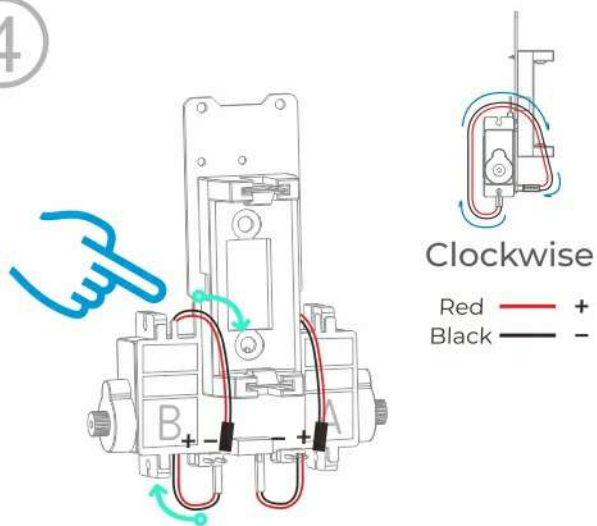
Paste the servo onto the indicated position, the direction of the motor is as shown.

③



The rubber band is used to fix the main board and the servo.

④



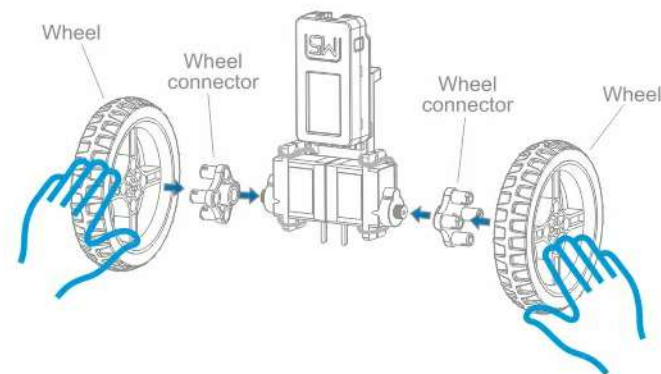
The servo cable is fixed clockwise to the main board, Red represents positive, black represents negative, as shown.

⑤



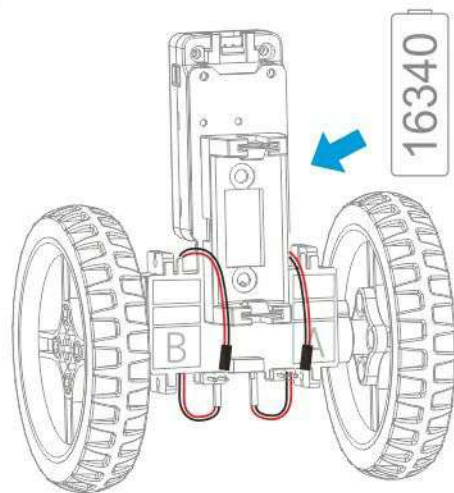
Assemble M5StickC Plus

⑥



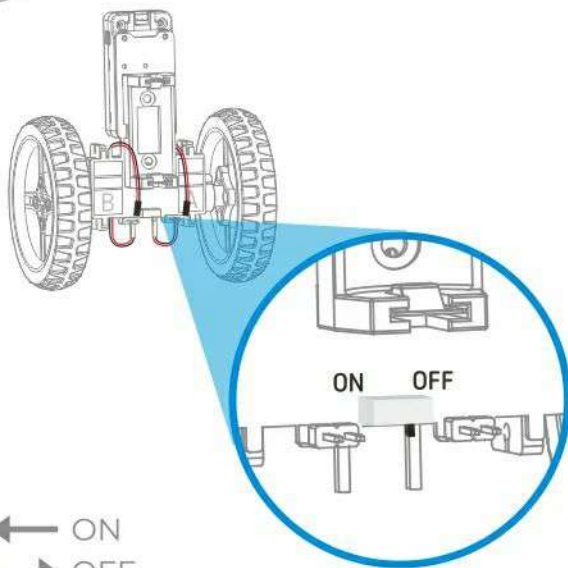
Assemble Wheel

7



Installation Battery

8



← ON
→ OFF

ALL Parts

