



**Amprobe continuing to  
deliver quality and versatility  
in test and measurement**





## Quality and service beyond compare



## Our Customers

Throughout the past 50 plus years, Amprobe® has become the leader in providing clamp-on meters. The brand has expanded its product offering to now over 250 items and has become an established leader in quality test equipment for professionals in the electrical, maintenance, construction, and HVAC industries.

## Our products

The products shown in this catalog include an extensive selection of portable multi-meters, clamp meters, power quality analyzers, circuit tracers as well as component checkers, HVAC testers and specialty tools such as electrical testers. Also shown is a complete selection of accessories.

## Our distributors

The products shown in this catalog are sold and supported by a worldwide network of Amprobe distributors and dealers. Should you require any assistance or have questions about our products or their applications, these local dealers stand ready to serve you.

## New Product Highlights

### CM100

#### Carbon Monoxide Meter

The Amprobe CM100 is a compact size CO meter for measuring and displaying the presence of carbon monoxide and at what level. You can set the meter's alarm to alert when CO level goes beyond a pre-determined safety level. The CM100 User manual has a chart of published safety levels for CO.

*(For more information turn to page 39)*



### DM-II PLUS

#### Power Quality Recorder

Amprobe's DM-II PLUS is a full-featured three phase power quality recorder to maintain, diagnose and troubleshoot electrical systems. Easy to use; capable of measuring and recording voltage, current, voltage anomalies (sags or surges), harmonics, energy and power (active, reactive and apparent), power factor (true and displacement), and frequency.

*(For more information turn to page 33)*



### TACH20

#### Tachometer, Combo Non-Contact and Non-Contact

With an exceptional design, the Amprobe TACH20 hand-held tachometer can accurately measure rotational or surface speed as well as length. It comes with a large LCD display that allows to easily read the displayed measurement. It also has a built in memory function that permits the user to store automatically the maximum, the average, the minimum, and the last value read.

*(For more information turn to page 40)*



### GSD600

#### Gas Leak Detector

The Amprobe GSD600 is a fast responding gas leak detector for methane and propane gas. The meter emits a frequency tone when gas is detected. The frequency of the beep coincides with the concentration of the gas. The LEDs display the level of gas present in an area or room.

*(For more information turn to page 39)*





# Table of Contents

## CLAMP-ON METERS

### 600A Clamp-On Multimeters

ACD-10 PLUS.....	02
ACD-10 TRMS-PLUS.....	02

### 400A Clamp-On Multimeters

ACD-14 PLUS.....	02
ACD-14 TRMS-PLUS.....	02
ACDC-400.....	03
AD40B.....	03
AC40B.....	03

### Professional 1000A Clamp-On Meters

ACD-6 PRO.....	04
ACD-6 TRMS-PRO.....	04
AD105A.....	04
ACDC-100.....	05
ACDC-100 TRMS.....	05

### Professional 2000A Clamp-On Meters

ACD-15 PRO.....	05
ACD-15 TRMS-PRO.....	05

### Specialty Clamp-On Multimeters

AC75B.....	06
AC71B.....	06
AC68C.....	06

### Leakage Clamp-On Meters

LH41A.....	07
AC50A.....	07

### Recording Clamp-On Multimeters

ACD-16 PRO.....	07
ACD-16 TRMS-PRO.....	07

### Industrial Clamp-On Multimeters

ACDC-620T.....	08
ACDC-3000.....	08
ACD-330T.....	08

### Power Quality Clamp-Ons

ACD-31P.....	09
ACD-41PQ.....	09
ACD-56 HPQ.....	09

### Clamp-On Meters Chart.....

## MULTIMETERS

### Full-Featured, Full-Size Multimeters

38XR-A.....	12
37XR-A.....	12
34XR-A.....	12
33XR-A.....	13
30XR-A.....	13

### Compact, Full-Featured Multimeters

35XP-A.....	14
15XP-A.....	14
5XP-A.....	14

### Automotive Multimeter

AU92.....	15
-----------	----

### Compact, Full-Featured Multimeters

AM-220.....	15
AM-240.....	15

### Probe Style Multimeter

DM73C.....	15
------------	----

### Pocket Multimeters, PM Series

PM55A.....	16
PM53A.....	16
PM51A.....	16

### General Purpose Meters

DM7C.....	17
DM9C.....	17
DM78C.....	17
AM8C.....	17

### True RMS Precision Digital Multimeters

AM-140 TRMS.....	18
AM-150 TRMS.....	18
AM-160 TRMS.....	18

### Heavy Duty Multimeters

HD160C.....	19
HD110C.....	19

### Multimeters Chart.....

## WIRE TRACERS

### Breaker Tracers

ECB50A.....	22
BT-250.....	22
AT-1000.....	22

### Underground Wire and Pipe Locator

AT-3000 PRO.....	23
------------------	----

### Current Tracers

CT-100.....	23
CT-326B.....	23

### Wire Tracers

AT-2002.....	24
AT-2004.....	24
AT-2005.....	24
ATGC-1.....	24

### Advanced Wire Tracers

AT-4001 CON.....	25
AT-4003 CON.....	25
AT-4004 CON.....	25
AT-4005 CON.....	25

## INSULATION TESTERS

### Digital Insulation Testers

ISO-PRO.....	26
AMB-45.....	26
AMB-25.....	26

### 5000V Insulation Testers

AMB-5KV-D.....	27
AMB-5KV.....	27

### Machinery Tester

ALLTEST-US.....	27
-----------------	----

### Analog Insulation Testers

AMB-2.....	28
AMB-3.....	28

### Hand Cranked Insulation Testers

AMC-2.....	28
AMC-3.....	28
AMC-4.....	28

### Ground Resistance Testers

GP-2.....	29
DGC-1000A.....	29
EARTH-TEST.....	29

## POWER QUALITY

### Multifunction Recorder and Insulation Ground Resistance Testers

DM-III Multitest.....	30
DM-III Multitest F.....	30

### Power Quality Recorder

DM-4.....	32
-----------	----

### Power Quality Data Logger

DM-II PLUS.....	33
-----------------	----

## ENVIRONMENTAL TESTERS

### Air Flow/CFM

TMA10A.....	34
TMA40.....	34

### Temperature

TMD90A.....	34
TMD10.....	35
TM45A.....	35
TPP1-F1.....	35
TPP1-C1.....	35
TPP2-F1.....	35
TPP2-C1.....	35

### Infrared Thermometer

IR608A.....	35
-------------	----

### Relative Humidity

THWD-3.....	36
TH-3.....	36
TH-1.....	36
THWD-5.....	37

### Ultrasonic Leak Detection

ULD-300.....	37
TMULD-300.....	37

### Temperature and RH Dataloggers

TR100.....	38
TR200.....	38
TR300.....	38

### Gas Leak Detectors

CM-100.....	39
GSD-600.....	39

### Ultrasonic Distance Meters

UDM-45.....	39
-------------	----

### Differential Pressure

MAN-02.....	40
-------------	----

### Combination Tachometer

TACH20.....	40
-------------	----

### Light Meters

LM-120.....	41
LM-100.....	41
LM631A.....	41

### Sound Meters

SM-10.....	42
SM-20.....	42
SM-70.....	43
SM-CAL1.....	43

## ELECTRICAL TESTERS

### Non-Contact Voltprobes®

VP-440.....	44
VP-600SB.....	44
K-1.....	44
VT201A.....	44

### High Voltage Non-Contact Testers

TIC 300CC.....	45
TIC 300HV.....	45
TIC 410A.....	45

### Voltage & Continuity Testers

LAN-1.....	46
VPC-10.....	46
VPC-10N.....	46

### Continuity Tester

PY-11.....	46
------------	----

### Specialty Probes

LP10B.....	47
LP25B.....	47
HV231-10A.....	47

### Socket Testers

ST101A.....	47
ST102A.....	47
PY-1.....	47

## PHASE SEQUENCE/COMPONENT TEST/RELAYS

### Phase Sequence

PRM-4.....	48
------------	----

### Handheld Component Testers

CR50A.....	48
LCR55A.....	48

### Remcon Relays

R-115S.....	49
RC-120S.....	49

## ACCESSORIES

Accessories.....	50-59
------------------	-------





## 600A Clamp-On Multimeters

Amprobe's ACD-10 PLUS meters offer thinner jaws over standard clamp meters. Allowing access to tight measurement areas and still accomodating conductors up to 25 cm (1 in). Both meters also measure Capacitance and Frequency. Frequency is measured by either jaws or test leads. Very versatile clamp-on multimeters.

### ACD-10 PLUS and ACD-10 TRMS-PLUS Clamp on Multimeters with Unique Thin Jaws

- TRMS Measurement (ACD-10 TRMS-PLUS)
- AC and DC Voltage to 600 V
- AC Current to 600 A
- Resistance to 40 mΩ with Continuity Buzzer
- Capacitance to 3000 μF
- Frequency measurement
- Hold & Maximum reading functions
- Max Conductor 25.4 mm (1")
- Auto Ranging
- Thinner jaws (approx 6.35mm (.25") thinner)
- Includes carrying case



FEATURES	ACD-10 PLUS	ACD-10 TRMS-PLUS
TRMS Measurement	N/A	Yes
AC Voltage	4.000, 40.00, 400.0, 600 V	
DC Voltage	400.0 m, 4.000, 40.00, 400.0, 600 V	
AC Current	40.00, 400.0, 600 A	
Resistance with Continuity Buzzer	400.0 Ω, 4.000 kΩ, 40.00 kΩ, 400.0 kΩ, 4.000 mΩ, 40.00 mΩ	
Capacitance	500.0 nF, 5.000 μF, 50.00 μF, 500.0 μF, 3000 μF	
Frequency (Using Jaw or Test Leads)	40-400 Hz with Jaw, 10 Hz to 100 kHz with test leads	



## 400A Clamp-On Multimeters

The ACD-14 PLUS is the professionals' choice for both HVAC & Electrical applications due to its complete set of measuring features. Its dual displays allows viewing amperage and voltage measurements simultaneously.

### ACD-14 PLUS and ACD-14 TRMS-PLUS Dual Display Digital Clamp-On Multimeters\*

- TRMS Measurement (ACD-14 TRMS-PLUS)
- Dual Displays - Permits simultaneous reading of Amperage & Voltage
- Thinner Jaws (approx. 6.35mm (.25") thinner)
- Micro Amps measurement for testing "Flame Sensors"
- Capacitance to 3000 μF
- Temperature w/Type-K Thermocouple
- AC and DC Voltage to 600 V
- AC current to 600 A
- Resistance to 40 mΩ
- Continuity Buzzer
- Frequency Measurement
- Auto Power Off
- Auto Ranging
- Hold & Maximum Readings
- Max Conductor 25.4 mm (1")
- Includes carrying case



\* See Features Chart on page 3





## 400A Clamp-On Multimeters

This versatile clamp-on multimeter offers numerous measurement features in a professional sized package. Versatile and rugged for facility maintenance to field service.

### ACDC-400 Digital AC/DC Clamp-on Multimeter

- AC/DC Current up to 400 A
- AC/DC Voltage up to 600 V
- Resistance measurement
- Continuity test
- Data Hold
- MAX/MIN recording
- Relative measurement
- Backlight
- Analog bargraph
- Auto or Manual range selection
- Max Conductor 29.97 mm (1.18")
- Includes carrying case



FEATURES	ACD-14 PLUS	ACD-14 TRMS-PLUS	ACDC-400
TRMS Measurement	N/A	Yes	N/A
AC Voltage	4.000, 40.00, 400.0, 600 V		400.0 m, 4.000, 40.00, 400.0, 600 V
DC Voltage	4.000, 40.00, 400.0, 600 V		400.0 m, 4.000, 40.00, 400.0, 600 V
AC Current	40.00 / 400.0 A / 600 A		40.00 / 400.0 A
DC Current	N/A		40.00 / 400.0 A
AC/DC Micro Amps (Using Test Leads)	400 $\mu$ A, 2000 $\mu$ A		N/A
Resistance with Continuity Buzzer	400.0 $\Omega$ , 4.000 k $\Omega$ , 40.00 k $\Omega$ , 400.0 k $\Omega$ , 4.000 m $\Omega$ , 40.00 m $\Omega$		
Capacitance	500.0 nF, 5.000 $\mu$ F, 50.00 $\mu$ F, 500.0 $\mu$ F, 3000 $\mu$ F		N/A
Frequency (Using Test Leads)	10 Hz to 100 kHz		N/A
Temperature	-4 $^{\circ}$ F to 999 $^{\circ}$ F (-20 $^{\circ}$ C to 537 $^{\circ}$ C)		N/A

These unique mini-clamp meters meet your needs when measuring up to 400 amps. Their compact size make them a handy daily tool to fit into the slightest of tool kits. With an easy to read digital display, Data Hold capability, Analog Bargraph and 10 mA resolution when using the 40A range.

### AC40B Clamp Type Digital Multimeter

- Mini-clamp DMM
- 400 A range
- 600 V AC and DC range
- 4000-count display with bargraph
- 10mA resolution in lowest range
- Auto Ranging
- Data Hold
- Auto Power Off



**Note: Also available, model AD40B mini clamp ammeter.**

FEATURES	AD40B	AC40B
AC Voltage	N/A	400.0, 600 V
DC Voltage	N/A	400.0, 600 V
AC Current	40.00, 400.0 A	
Resistance	N/A	400 $\Omega$
Continuity (audible)	N/A	Yes
Overload Protection	660 A for AC current only 660 V RMS for all other measurements	



## Professional 1000A Clamp-On Meters

### ACD-6 PRO & ACD-6 TRMS-PRO 1000A Digital Clamp-ons

These two ACD-6 high current clamp meters also offer multimeter measurements of AC and DC voltage, Resistance and audible continuity. The True RMS version offers improved results when measuring in noisy AC environments. Large digital display.

- TRMS (ACD-6 TRMS-PRO) when measuring in noisy AC environments
- AC Current to 1000 A
- AC/DC voltage to 600 V
- Resistance to 40 mΩ
- Diode Test
- Auto Ranging
- Extra large digital display for easy viewing
- Audible continuity
- Max conductor 45 mm (1.77")
- Includes carrying case



### AD105A True RMS 1000 Amp Ammeter, AC and DC

A clamp ammeter designed for electrical contractors, electricians, and industrial plant maintenance personnel. The AD105A measures AC and DC current up to 1000 Amps. Frequency is measured by jaw up to 10kHz. Max Conductor of 50 cm (2 in).

- TRMS when measuring in noisy AC environments
- Wide range to 1000 Amps, AC and DC
- Measures frequency through the jaws or test leads
- Auto Ranging
- 4000-count
- Belt-clip carrying case included
- CAT III 1000V rated
- Includes carrying case



FEATURES	ACD-6 PRO	ACD-6 TRMS-PRO	AD105A
TRMS Measurement	N/A	N/A	Yes
AC Voltage	4.000, 40.00, 400.0, 600 V		N/A
DC Voltage	400.0 m, 4.000, 40.00, 400.0, 600 V		N/A
Resistance	400.0 Ω 4.000 / 40.00 / 400.0 kΩ 4.000 / 10.00 mΩ		N/A
AC Current	400.0 / 1000 A		400, 1000 A
DC Current	N/A	N/A	400, 1000 A
Frequency	N/A	N/A	1 Hz to 4 kHz

## Professional 1000A Clamp-On Meters

### ACDC-100 & ACDC-100 TRMS 1000A Digital Clamp-on Multimeters

Where accuracy, quality, and newest technology meet. The ACDC-100 offers superior AC/DC measurement capabilities, highest product quality and enhanced ergonomics. The TRMS version addresses needs of professionals who rely on performance and reliability.

- TRMS & Backlight Screen (ACDC-100 TRMS)
- Auto and manual ranging
- Relative zero mode
- Auto Power Off
- Auto Ranging
- Data Hold
- Audible continuity
- Max conductor 50 mm (2.00")
- Large digital display
- Carrying case, test leads and battery



ACDC-100

## Professional 2000A Clamp-On Meters

### ACD-15 PRO & ACD-15 TRMS-PRO 2000A Digital Clamp-on Multimeters

The ACD-15 PRO clamp meter for when you need to measure high current. Measures up to 2000A AC. Plus it measures AC and DC voltage, resistance and offers audible continuity. Additional feature is a built in non-contact voltage detector. Choose the True RMS version when working in noisy AC environments. Large digital display.

- TRMS & Backlight Screen (ACD-15 TRMS PRO)
- Measurements: AC/DC Voltage up to 600 V, AC Current up to 2000 A, Resistance, Frequency and Capacitance
- Non-contact Voltage Level Detection
- Audible continuity
- AutoTest™ feature automatically selects DCV, ACV or Resistance  $\Omega$
- Auto and Manual Ranging
- Auto Power Off
- Data Hold
- Max conductor 45 mm (1.77")
- Carrying case, test leads and battery



FEATURES	ACDC-100	ACDC-100 TRMS	ACD-15 PRO	ACD-15 TRMS-PRO
TRMS Measurement	N/A	Yes	N/A	Yes
AC Current	400.0 / 800 A		600.0 / 2000 A	
DC Current	400.0, 1000 A		N/A	
Voltage AC/DC	600 V		6.000, 60.00, 600.0 V	
Resistance	400.0, 4.000 k, 40.00 k, 400.0 k, 4.000 m, 40.00 m $\Omega$		6.000 k, 60.00 k, 600.0 k, 6.000 m $\Omega$	
Frequency	N/A		10 Hz to 1 kHz	
Capacitance	500.0 nF, 5.000, 50.00, 500.0, 3000 $\mu$ F		100.0, 1000 nF, 10.00, 100.0, 2000 $\mu$ F	
Non-contact Voltage	N/A		Yes	



## Specialty Clamp-On Multimeters

### AC75B Three tools in one: clamp meter, multimeter and thermometer

Custom designed to make HVAC/R Service, Electrical, and Industrial maintenance tasks faster and easier.

- 600A AC Current
- Digital thermometer 400 °C (1000 °F) , Type K probe included
- AC/DC 750V/1000V
- 40 mΩ Resistance
- Low DC μA for flame rod detector testing
- Capacitance to 4000 μF for motor run/start testing
- Continuity beeper
- 4000-count large digit display
- Jaw size 35 mm (1.3")
- Auto Power Off
- Full overload protection
- Includes carrying case



### AC71B Automatic AC Clamp Multimeter

Automatic AC clamp meter with two unique features: AutoTest™ and automatic backlight. The AutoTest feature senses what type of measurement is being made across the test leads. The automatic bright blue backlight has a sensor that recognizes when the ambient light becomes dim and turns itself on.

- AutoTest™ Function – automatically selects AC volts, DC volts or resistance
- Automatic bright blue backlight
- Easy one-button control
- AC current to 600 A
- AC volts to 750 V
- DC volts to 1000 V
- Resistance and Continuity Beeper
- Data Hold
- Max Conductor 32 mm (1.25")
- Includes carrying case



### AC68C AC/DC TRMS 600 A Clamp Meter

- Measures non-linear load current
- True RMS reading
- Autoranging for frequency measurement
- Data Hold button, holds the display reading for all functions and ranges
- Measures frequency through jaws or test leads
- Low battery indicator
- DC current (Zero adjustment button)
- Peak Hold, converts and displays the peak value for AC volts and amps readings
- Includes carrying case



## Leakage Clamp-on Meters

The compact size of these two meters make them ideal for taking measurements on small conductors. Their excellent accuracy and resolution offer exceptional performance.

### LH41A AC/DC Low Current Clamp Meter

- Measures AC and DC current into the low milliamp range up to 40 A
- Auto Zero DC for correct measurement every time
- 1 mA current resolution for quick circuit comparison on sensor and control circuits
- Auto Power Off function



LH41A

### AC50A Leakage Current Clamp Multimeter

- AC current measurement to 60 A
- Leakage current measurements with resolution of 0.01 mA
- AC voltage to 400 V
- Resistance measurement and continuity beeper
- Min/Max control to see largest and smallest values



## Recording Clamp-On Multimeters

Need the perfect tool to troubleshoot a system? These clamp-ons provide a full range of measurements, enhanced with data logging capabilities, to catch what the eye can't see. Double the efficiency, with an optional PC interface kit (RS-232 KIT2).

### ACD-16 PRO & ACD-16 TRMS-PRO 1000 A Data-Logging Clamp-on Multimeters

- TRMS & Backlight Screen (ACD-16 TRMS PRO)
- Measurements: AC/DC Voltage up to 600 V, AC Current up to 1000 A, Resistance, Frequency and Temperature
- Data-logging 5400 points
- Audible continuity
- Auto Power Off
- Automatic polarity
- Data hold
- Max conductor 45 mm (1.77")
- "Third hand" - test probe holder



CLAMP-ON METERS

FEATURES	AC75B	AC71B	AC68C	AC50A	LH41A	ACD-16 PRO	ACD-16 TRMS-PRO
TRMS	N/A		Yes	N/A			Yes
AC Voltage	4.000, 40.00, 400.0, 750 V	1.3 V to 750.0 V	600 V	400.0 V	N/A	600.0 V	
DC Voltage	4.000, 40.00, 400.0, 1000 V	1.8 V to 1000.0 V -0.6 V to -1000.0 V	400.0, 600 V	N/A		600.0 V	
AC Current	400.0, 600 A			40.00 m, 400.0 m, 4.000, 40.00, 60.0 A	4.000, 40.00 A	40.0 / 400.0 / 1000 A	
DC Current	400.0, 4000 μA	N/A	400.0, 600 A	N/A	4.000, 40.00 A	N/A	
Resistance	400, 4 k, 40 k, 400 k, 4 m, 40 mΩ	100.0 Ω	4.000 kΩ	400.0 Ω	N/A	999.9 Ω	
Continuity	Yes				N/A		
Capacitance	4 n, 40 n, 400 n, 4 Ω, 40 Ω, 400 Ω, 4 mF	N/A					
Frequency	N/A		4.000 kHz, 20.00 kHz	N/A		5.00 Hz to 500.0 Hz	
Temperature	0 °C, 400 °C (32 °F, 750 °F, 1000 °F)	N/A		N/A		-50 °C to 300 °C- (58 °F to 572 °F)	

**Product Specific Optional Accessories:** The ACD-16 PRO and ACD-16 TRMS-PRO are compatible with RS-232 KIT2, RS-USB and Download Suite.

## Industrial Clamp-on Multimeters

### ACDC-620T Digital AC/DC Clamp-on Multimeter

- TRMS Measurement
- AC/DC Voltage up to 1000 V, AC/DC Current up to 1000 A, Resistance, Capacitance, Temperature, and Continuity Buzzer
- Dynamic Min/Max/Avg recording
- In-rush Peak Current capture (1 mS response)
- Temperature measurement
- Dual Display of °F & °C readings
- Continuity Buzzer
- Reading Hold function
- Auto/Manual Ranging and Auto Power Off
- Max conductor 52 mm (2.04")
- Analog Bar Graph indicator

### ACDC-3000 Digital AC/DC Clamp-on Multimeter

- TRMS Measurement
- AC Voltage up to 750 V, DC Voltage up to 1000 V, AC/DC Current up to 1000 A, Resistance, Frequency, % Duty Cycle, Continuity Buzzer
- Dynamic Recording of Max, Min and Average readings
- In-rush Peak Current capture (1 mS response)
- Dual Display of Amp & Freq., Amps & Duty Cycle, Voltage & Freq., Voltage & Duty Cycle
- 43 Segment, High speed, Analog Bar Graph
- Continuity Buzzer
- Auto/Manual Ranging and Auto Power Off

### ACD-330T Digital AC Clamp-on Multimeter

- TRMS sensing
- AC/DC Voltage up to 1000 V, AC Current up to 1000 A, Resistance, Continuity Buzzer, Frequency
- Dynamic Min/Max/Avg Recording
- In-rush Peak Current capture (1 mS)
- Reading Hold function
- Dual Display of Frequency with Current or Voltage
- Continuity Buzzer and Diode Test
- Max Conductor 52 mm (2.04")
- Auto/Manual Ranging
- Auto Power Off

FEATURES	ACDC-620T	ACDC-3000	ACD-330T
AC Voltage	400.0, 1000 V	4.000, 40.00, 400.0, 750 V	400.0, 1000 V
DC Voltage	400.0, 1000 V	4.000, 40.00, 400.0, 1000 V	400.0, 1000 V
AC Current	400.0, 1000 A	40.00, 400.0, 1000 A	400.0, 1000 A
DC Current	400.0, 1000 A	40.00, 400.0, 1000 A	N/A
AC + DC TRMS Voltage	N/A	4.000, 40.00, 400.0, 750 V	N/A
AC + DC TRMS Current	N/A	40.00, 400.0, 1000 A	N/A
Resistance	400.0 Ω, 4.000 kΩ	400.0 Ω, 4.000 kΩ, 40.00 kΩ 400.0 kΩ, 4.000 mΩ, 40.00 mΩ	400.0 Ω, 4.000 kΩ
Capacitance	400.0, 4000 μF	N/A	N/A
Frequency	N/A	10.00-199.99 Hz, 1999 Hz, 2.00-19.99 kHz, 199.9 kHz	100, 1000 Hz
Temperature	-40 °C to 1372 °C (-40 °F to 2500 °F)	N/A	N/A
% Duty Cycle	N/A	0.0-99.9 %	N/A
In-rush Peak Current Max (Ac or DC)	Yes	Yes	Yes
Continuity Buzzer	Yes	Yes	Yes
Diode Test	Yes	Yes	N/A



## Power Quality Clamp-Ons

These instruments combine the standard features of professional clamp-on meters, with full Power analyzing capabilities. Increase measuring efficiency using the ACD-31P or ACD-41PQ with an optional PC interface kit (RS-232 KIT2). View individual harmonics using the ACD-56 HPQ.

### ACD-31P & ACD-41PQ 1000A Power Quality Clamp-on Power Meters

- TRMS sensing and Backlight Screen
- Measures Total Harmonics Distortion (ACD-41PQ)
- Voltage to 600 V, Current to 1000A
- Resistance, Frequency & Temperature
- Active (W), Reactive (VAR) and Apparent (VA) Power with Power Factor
- Auto VA - Auto Selection of AC Volts, DC Volts or AC Amps (ACD-41PQ)
- Optional PC interface capability
- Audible continuity
- Low battery indication
- Peak Hold and Data Hold
- Max conductors 45 mm (1.77")
- "Third hand" - test probe holder
- Voltage overload protection for all functions up to 600 V AC/DC



### ACD-56 HPQ 2000A Power Quality Clamp-on Multimeter

- TRMS & Backlight Screen
- AC/DC Voltage up to 600 V
- AC Current up to 2000 A
- Resistance
- Frequency
- Capacitance
- Non-contact Voltage Level Detection
- Audible continuity
- Auto and Manual Ranging
- Auto-check feature automatically selects DCV, ACV or Resistance  $\Omega$
- Auto Power Off
- Automatic polarity
- Low battery indication
- Data Hold
- Max conductors 45 mm (1.77")
- Carrying case, test leads and battery



FEATURES	ACD-31P	ACD-41PQ	ACD-56 HPQ
TRMS Measurement	Yes		Yes
AC Current	40.00 / 400.0 / 1000 A		0 - 399.9 A
Voltage AC/DC	600.0 V		1.6 - 599.9 V
Resistance	999.9 Ohms		499.9 / 999/ 1999 Ohms
Frequency	5.00 Hz to 500.0 Hz		40.0 - 399.9 Hz
Active Power (W)	0 to 600.0 kW		0.00 - 99.90 / 0.00 - 999.9
Reactive Power (VAR)	0 to 600.0 kVAR		0.00 - 99.90 / 0.00 - 999.9
Apparent Power (VA)	0 to 600.0 kVA		0.00 - 99.90 / 0.00 - 999.9
Power Factor	0.10 to 0.99		0.20 - 1.00
THD-R	N/A	0.0 % to 99.9 %	N/A
THD-F	N/A	0.0 % to 99.9 %	N/A
Temperature	-50 °C to 300 °C (-58 °F to 572 °F)		N/A
AC Peak Voltage	N/A		10 to 850 V @ 1 ms Rt
AC Peak Current	N/A		10 to 800 A @ 1 ms Rt
Voltage/Current Harmonics	N/A		THD, Individual harmonics 1 to 25

**Product Specific Optional Accessories:** The ACD-31P and ACD-41PQ are compatible with RS-232 KIT2, RS-USB and Download Suite.

## Clamp-On Meters Chart

FEATURES/ MODEL #	ACD-10 PLUS	ACD-10 TRMS- PLUS	ACD-14 PLUS	ACD-14 TRMS- PLUS	ACDC- 400	AC40B	AD40B	ACD-6 PRO	ACD-6 TRMS PRO	AD- 105A	ACDC- 100	ACDC- 100 TRMS
	Page 2	Page 2	Page 2	Page 2	Page 3	Page 3	Page 3	Page 4	Page 4	Page 4	Page 5	Page 5
Safety Rating	CAT III 600 V	CAT III 600 V	CAT III 600 V	CAT III 600 V	CAT III 600 V	CAT III 600V	CAT III 600 V	CAT III 600 V	CAT III 600 V	CAT III 1000 V	CAT III 600 V	CAT III 600 V
TRMS		•		•					•	•		•
AC Current	600 A	600 A	600 A	600 A	400 A	400 A	400 A	1000 A	1000 A	1000 A	800 A	800 A
DC Current					400 A					1000 A	1000 A	1000 A
AC/DC Microamps			•	•								
AC Voltage	600 V	600 V	600 V	600 V	600 V	600 V		600 V	600 V		600 V	600 V
DC Voltage	600 V	600 V	600 V	600 V	600 V	600 V		600 V	600 V		600 V	600 V
Resistance	•	•	•	•	•	•		•	•		•	•
Continuity Buzzer	•	•	•	•	•	•		•	•		•	•
Capacitance	•	•	•	•							•	•
Frequency (Test Leads)	•	•	•	•								
Frequency (Jaw)	•	•								•		
Temperature			•	•								
Diode Test	•	•	•	•				•	•		•	•
Data Hold	•	•	•	•	•	•	•	•	•		•	•
Max/Peak	•	•	•	•	•					•	•	•
Auto Ranging	•	•	•	•	•	•	•	•	•	•	•	•
Relative Zero	•	•			•			•	•		•	•
Non Contact Voltage, VolTect™												
Auto Function (V, A or R), AutoTect™												
Internal Memory & PC Connection												
Back Light					•							•
Duty Cycle												
Auto Power Off	•	•	•	•	•	•	•	•	•	•	•	•

## Clamp-On Meters Chart

FEATURES/ MODEL #	ACD-15 PRO	ACD-15 TRMS PRO	AC75B	AC71B	AC68C	LH41A	AC50A	ACD-16 PRO	ACD-16 TRMS PRO	ACDC- 620T	ACDC- 3000	ACD- 330T
	Page 5	Page 5	Page 6	Page 6	Page 6	Page 7	Page 7	Page 7	Page 7	Page 8	Page 8	Page 8
Safety Rating	CAT III 600 V	CAT III 600 V	CAT III 600 V	CAT II 1000 V CAT III 600 V	CAT III 600 V		CAT II 600 V CAT III 300 V	CAT III 600 V	CAT III 600 V	CAT III 600 V	CAT III 600 V	CAT III 600V
TRMS		•			•				•	•	•	•
AC Current	2000 A	2000 A	600 A	600 A	600 A	40 A	60 A	1000 A	1000 A	1000 A	1000 A	1000 A
DC Current					600 A	40 A				1000 A	1000 A	
AC/DC Microamps			•									
AC Voltage	600 V	600 V	750 V	750 V	600 V		400 V	600 V	600 V	750 V	1000 V	750 V
DC Voltage	600 V	600 V	1000 V	1000 V	600 V			600 V	600 V	1000 V	1000 V	1000 V
Resistance	•	•	•	•	•		•	•	•	•	•	•
Continuity Buzzer	•	•	•	•	•		•	•	•	•	•	•
Capacitance	•	•	•							•		
Frequency (Test Leads)	•	•			•			•	•		•	•
Frequency (Jaw)								•	•			
Temperature			•					•	•	•		
Diode Test	•	•	•		•							
Data Hold	•	•	•	•			•	•	•	•	•	•
Max/Peak					•		•			•	•	•
Auto Ranging	•	•	•	•		•		•	•	•	•	•
Relative Zero							•			•		•
Non Contact Voltage, Voltect™	•	•										
Auto Function (V, A or R), AutoTest™	•	•		•								
Internal Memory & PC Connection								•	•			
Back Light		•	•	•					•		•	
Duty Cycle											•	
Auto Power Off	•	•	•	•	•	•		•	•	•	•	•

CLAMP-ON METERS





## Full-Featured, Full-Size XR Series Multimeters

Five meters custom designed for electronic, electrical, plant maintenance and HVAC applications.

### 38XR-A

#### True RMS with optical PC interface

Great for field troubleshooting in industrial, automation, process and plant environments.

- 10,000-count with high 0.25 % accuracy
- Bright blue backlight for dim environments
- Duty cycle, capacitance and frequency
- Magne-Grip™ holster with magnetic hanging strap
- 4-20 mA loop current with % readout
- Temperature to 1300 °C (2372 °F), type K thermocouple included
- True-rms AC + DC coupled for accurate measurements
- RS-232 data out for use with optional software, Model 38SW-A



### 37XR-A

#### True RMS with component and logic test

True RMS meter for electronics troubleshooting at the bench or job site. The highest accuracy meter in the XR series.

- Autoranging 10,000 count with 0.1 % accuracy for the most accurate measurements
- LCR functions: inductance, capacitance and resistance
- Frequency, duty cycle and logic test
- Bright blue backlight for dim environments
- Magne-Grip™ holster with magnetic hanging strap



34XR-A



### 34XR-A

#### True RMS with temperature and backlight

Designed for maintenance, repair and installation of electrical and electro-mechanical equipment. Ideal for contractors and field service technicians.

- True RMS for the most accurate measurements
- Extended 4000 µF capacitance range for motor run/start testing
- Bright blue backlight for dim environments
- Duty cycle, frequency and capacitance for complete measurement capability
- Temperature to 1000 °C (1832 °F) with a type K thermocouple included
- Magne-Grip™ holster with magnetic hanging strap
- Data hold, Min/Max and bargraph



## 33XR-A Manual ranging w/ temperature & capacitance

33XR-A gives the contractor and field service technician all the essential measurement functions they need in a rugged package.

- Temperature, frequency & capacitance
- Extended 4000  $\mu$ F capacitance range for motor run/start testing
- Magne-Grip™ holster with magnetic hanging strap
- Data hold, Peak Hold, Min/Max and REL



## 30XR-A Includes VolTect™, a built-in non-contact voltage tester

The 30XR-A has all the basic functions for automotive, residential and education applications.

- 9 functions, 30 ranges handles most measurement needs
- Magne-Grip™ holster with magnetic hanging strap frees both hands for work
- Battery/fuse door designed for easy accessibility
- Battery tester



MULTIMETERS

FEATURES	30XR-A	33XR-A	34XR-A	37XR-A	38XR-A
<b>DC Voltage</b>	200.0m V, 2.000, 20.00, 200.0, 600 V	400.0m, 4.000, 40.00, 400.0, 1000 V		1000 m, 10.00, 100.0, 1000 V	
<b>AC Voltage</b>	200.0 mV, 2.000, 20.00, 200.0, 600 V	400.0 m, 4.000, 40.00, 400.0, 750 V		1000 m, 10.00, 100.0, 750 V	
<b>DC Current</b>	200.0 $\mu$ , 2.000 m, 20.00 m, 200.0 m, 10 A	400.0 $\mu$ , 4.000 m, 40.00 m, 300.0 m, 10.00 A		100.0 $\mu$ , 1000 $\mu$ , 10.00 m, 100.0 m, 400.0 m, 10.00 A	
<b>AC Current</b>	200.0 $\mu$ , 2.000 m, 20.00 m, 200.0 m, 10 A	400.0 $\mu$ , 4.000 m, 40.00 m, 300.0 m, 10.00 A		100.0 $\mu$ , 1000 $\mu$ , 10.00 m, 100.0 m, 400.0 m, 10.00 A	
<b>Resistance</b>	200.0 $\Omega$ , 2.000 k, 20.00 k, 200.0 k, 2.000 m, 20.00 m $\Omega$	400.0, 40.00 k, 4.000 m $\Omega$	400.0, 4.000 k, 40.00 k, 400.0 k, 4.000 m, 40.00 m $\Omega$	1000.0, 10.000 k, 100.00 k, 1000.0 k, 10.00 m, 40.00 m $\Omega$	
<b>Continuity</b>	Yes				
<b>Diode</b>	Yes				
<b>Non-contact voltage detect</b>	Yes	N/A			
<b>Capacitance</b>	N/A	4.000 $\mu$ F, 40.00 $\mu$ F, 400.0 $\mu$ F, 4000 $\mu$ F		40.00 n, 400.0 n, 4.000 $\mu$ , 40.00 $\mu$ , 400.0 $\mu$ F	
<b>Frequency</b>	N/A	4.000 k, 40.00 k, 400.0 k, 1 mHz		100.00, 1.0000 k, 10.000 k, 100.00 k, 1.0000 m, 10.000 mHz	
<b>Temperature</b>	N/A	1000 °C (1832 °F)	1000 °C (1832 °F)	N/A	1300 °C (2372 °F)
<b>Duty cycle</b>	N/A	N/A	0.0 to 90.0 %	0.00 to 90.00 %	
<b>Logic Test</b>		N/A		Yes	N/A
<b>Inductance</b>		N/A		40 H	N/A
<b>dBm</b>		N/A		-13 dBm to + 50 dBm	-13 dBm to + 50 dBm
<b>Battery Test</b>	1.5 V, 9 V			N/A	

### Magne-Grip™ Holster with magnetic hanging strap

This holster protects the meter and provides the "third hand" DMM users need. A magnetic hanging strap secures the meter to a convenient steel surface, freeing both hands for work.



### Optional RS-232 cable and software, 38SW-A

Real-time data acquisition software logs and displays data from all 38XR-A measurement functions.



## Compact, Full-Featured Multimeters

The three XP Series digital multimeters are full-featured, compact in size with two unique extras: VolTect™ and our exclusive Magne-Grip™ Holster. Every XP DMM includes select features that make your testing safer, easier, and more efficient whether it be in field service, electronic repair, electrical or HVAC applications. Delivering the best performance in a compact instrument, the XP Series is the right choice for your work.

### 35XP-A For HVAC, plant maintenance technicians and residential electricians

- Temperature measurement capability to 1000 °C (1832 °F)
- Capacitance for motor run/start test
- 0.1 µA resolution for flame sensor testing
- Frequency

### 15XP-A For electronics engineers, technicians and field service

- Autoranging display for faster measurements
- TTL logic test for digital circuits
- Integrated tilt stand for easy bench use
- Diode test for component level troubleshooting
- Special 2000 mΩ resistance range

### 5XP-A For residential, commercial and general troubleshooting applications

- 27 ranges/10 functions: a complete performance, general purpose digital multimeter
- Battery load test with 1.5 volt and 9 volt capabilities
- Min/Max records minimum and maximum values

FEATURES	5XP-A	15XP-A	35XP-A
DC Voltage	200.0m V, 2.000, 20.00, 200.0, 1000 V		400.0 m, 4.000, 40.00, 400.0, 1000 V
AC Voltage	200.0 mV, 2.000, 20.00, 200.0, 750 V		400.0 m, 4.000, 40.00, 400.0, 750 V
Current AC/DC	200.0 μ, 2.000 m, 20.00 m, 200.0 mA	200.0 μ, 2.000 m, 20.00 m, 200.0 m, 2 A	400.0 μA, 4.000 μA, 40.00 mA, 400.0 mA, 2 A
Resistance	200.0 Ω, 2.000 k, 20.00 k, 200.0 k, 2.000 m, 20.00 mΩ	200.0 Ω, 2.000 k, 20.00 k, 200.0 k, 2.000 m, 20.00 m, 2000 mΩ	400.0, 4.000 k, 40.00 k, 400.0 k, 4.000 m, 40.00 mΩ
Continuity Beeper	Yes		
Non-contact Voltage	70 V to 600 VAC (50 Hz to 60 Hz)		
Capacitance	N/A		4.000 n, 40.00 n, 400.0 n, 4.000 μ, 40.00 μ, 400.0 μ, 4.000 mF
Frequency	N/A		4.000 k, 40.00 k, 400.0 k, 1 MHz
Temperature	N/A		-20 °C to 1000 °C, (-4 °F to 1832 °F)
Logic Test	N/A	TTL, 20 mHz	N/A
Battery Test	1.5 V, 9 V	N/A	
Available on all XP Series meters: Magne-Grip™ Holster with magnetic hanging strap frees both hands for work. VolTect™ non-contact voltage detection lets you instantly detect dangerous ac line voltages. Type K Probe (35XP-A).			



## Automotive Multimeter

### AU92 Digital Multimeter

Model AU92 is a full featured multimeter that has additional measurement features for automotive servicing. It offers a built-in thermometer and tests engine RPM and dwell as well as standard multimeter features of voltage, current, resistance and continuity.

- Performs all standard electrical test for on-car and bench troubleshooting including tach, dwell, volts, ohms & diode
- Tests engine RPM and dwell
- Measures AC/DC voltage, DC current, resistance, diodes and continuity beeper
- Accurate RPM measurements for 2- and 4-stroke automotive engines using the Inductive Pickup
- Locate faulty wiring and components
- Data Hold button retains display data
- Duty cycle and direct DWELL reading
- High impact over-molded case
- Includes inductive pick-up probe, test leads, test lead extender tips, threaded alligator clips, type k temperature probe, spare fuse



AU-92

## Compact, Full-Featured Multimeters

### AM-220 & AM-240 Digital Multimeters

Don't let the compact size of these meters fool you. Housed in a well-built and sturdy case design, they still offer a complete feature measurement set. Built for the field service person who uses their meter every day. But also a great meter for those occasional measurement requirements. Temperature capability and type K probe included (AM-240).

- AC and DC voltage to 600V
- AC and DC current to 10A
- Temperature to 1382 °F
- Resistance to 40 mΩ
- Capacitance to 4000 μF
- Frequency
- Temperature measurement with selectable °F/°C (AM-240 only)
- AC/DC micro Amps for sensors diagnosis
- MAX, MIN and Relative measurements
- Auto and Manual Ranging
- Tilt stand



## Probe Style Multimeter

### DM73C Meter w/built-in test probe for one-hand operation

- Unique pen shape for measuring in hard to get to places
- Two Probe Tip sizes, 3" and 1/2"
- Data Hold to freeze measurement value
- Includes alligator grounding clip
- 3400-count digital plus analog bargraph



FEATURES	AU92	AM-220	AM-240	DM73C
<b>Voltage AC</b>	400 mV, 4 V, 40 V, 400 V, 600 V	400 m, 4.000, 40.00, 400.0, 600 V		3.400, 34.00, 340.0, 600 V
<b>Voltage DC</b>	400 mV, 4 V, 40 V, 400 V, 600 V	400 m, 4.000, 40.00, 400.0, 600 V		340.0 m, 3.400, 34.00, 340.0, 600 V
<b>Current AC/DC</b>	400 A, 4000 A, 40 mA, 400 mA, 10 A	400.0 μ, 4000 μ, 40.00 m, 400.0 m, 4.000, 10.00 A		N/A
<b>Resistance</b>	400 Ω, 4 k, 40 k, 400 kΩ, 4 m, 40 mΩ	400.0, 4.000 k, 40.00 k, 400.0 k, 4.000 m, 40.00 mΩ		340.0, 3.400 k, 34.00 k, 340.0 k, 3.400 m, 34.00 mΩ
<b>Capacitance</b>	N/A	40.00 n, 400.0 n, 4.000 μ, 40.00 μ, 400.0 μ, 4000 μF		N/A
<b>Frequency</b>	4 k, 40 k, 400 kHz	10.00, 100.0, 1000, 10.00 k, 100.0 k, 1000 k, 10 MHz		N/A
<b>Continuity</b>	Yes			
<b>Duty Cycle</b>	1.0 % ~ 90.0 %	0.1 % - 99.9 %		N/A
<b>Temperature</b>	-20 °C to 1000 °C (-4 °F to 1832 °F)	N/A	-50 °C to 750 °C (-58 °F to 1382 °F)	N/A
<b>Extra Feature</b>	Tests engine RPM & Dwell	N/A		



PM53A



## Pocket Multimeters, PM Series

Three Auto Ranging multimeters with innovative features in an ultra-compact size. Simplified interface with easy one-touch button control, oversize digital display screens.

Progressive design with two remarkable features called VolTect™ and AutoTect™. VolTect™ feature is a built-in ac voltage detector. AutoTect™ feature is a function that automatically selects the meter to display between ac volts, dc volts or resistance, depending upon what the meter senses at the probe tips. (PM53A, PM55A)

Compact size offers a meter that is only .95 cm (.375 in) thick and weighs less than 85g (3 oz). Low Z input impedance to eliminate ghost voltages. Hi Z input impedance for electronic circuitry. (PM55A)

### PM55A Automatic Precision Pocket Multimeter

- AutoTect™ feature detects and displays AC volts, DC volts or resistance
- VolTect™ feature, a built-in AC voltage detector
- Extra features of capacitance, frequency and microamp current
- Option of Hi Z or Low Z input impedance for ghost voltages
- Includes zippered carrying case and protective holster



### PM53A Pocket size digital multimeter with AutoTect™

- Non-contact AC voltage detection, VolTect™ feature
- AutoTect™ feature detects and displays AC volts, DC volts or resistance
- Low Z input impedance eliminates ghost voltage readings
- Includes protective holster



### PM51A Pocket size multimeter w/frequency & capacitance

- Seven different measurement functions with 27 full ranges of measurement
- Oversized digital display with large digits and icons



FEATURES	PM51A	PM53A	PM55A
<b>Voltage AC/DC</b>	400.0 m, 4.000, 40.00, 400.0, 600 V	6.000, 60.00, 450.0 V	6.000, 60.00, 600.0 V
<b>Resistance</b>	400.0, 4.000 k, 40.00 k, 400.0 k, 4.000 m, 40.00 mΩ	600.0, 6.000 k, 60.00 k, 600.0 k, 6.000 mΩ	
<b>AC/DC uA Current</b>	N/A		400.0 u, 2000 uA
<b>Frequency</b>	400 Hz, 4 kHz, 40 kHz, 400 kHz, and 1 mHz	100 Hz, 1 kHz, and 10 kHz	10.00 Hz - 30.00 kHz
<b>Capacitance</b>	500.0 n, 5.000 μ, 50.00 μ, 500.0 μ, 3000 μF	100.0 n, 1000 n, 10.00 μ, 100.0 μF	
<b>Non-Contact Voltage Detection</b>	N/A	Yes	
<b>Diode Test</b>	Yes	N/A	Yes

Optional VC3A carrying case available for PM51A and PM53A.

## General Purpose Meters

Turn to this selection of general purpose testers when you need a choice between analog, compact, digital or unique sizes. These meters are great for the everyday user or for those occasional measurements you need to make.

### DM7C Compact multimeter

- 6 functions/14 ranges
- Special ranges to test battery
- Industry standard test leads, safety rated
- Protective holster included



### DM9C Compact autoranging meter

- High-resolution, 4000-count Auto Ranging
- 7 functions/23 ranges
- Battery Test Function with Go/NoGo LED indicator
- Protective holster included



### DM78C Voltage, continuity, diode and resistance in a credit card size meter

- 5 functions/16 ranges
- Continuity test: Buzzer alert
- Auto Power Off saves battery
- Data Hold
- Protective case included
- 3200-count display with analog bargraph



### AM8C Analog multimeter for the home, car or workshop

- High sensitivity taut band movement
- Five functions/15 ranges
- Battery test
- Ohms zero adjust
- Compact size



FEATURES	DM7C	DM9C	DM78C	AM8C
<b>DC Voltage</b>	2.000, 20.00, 200.0, 600 V	400.0 m, 4.000, 40.00, 400.0, 600 V	340.0 m, 3.400, 34.00, 340.0, 600 V	2.5, 10, 50, 150, 300 V
<b>AC Voltage</b>	200.0, 600 V	400.0 m, 4.000, 40.00, 400.0, 600 V	3.400, 34.00, 340.0, 600 V	50, 150, 300 V
<b>DC Current</b>	200 mA	40.00, 400 m, 10.00 A	N/A	0.5, 10, 250 mA
<b>AC Current</b>	N/A	40.00, 400 m, 10.00 A	N/A	N/A
<b>Resistance</b>	2000, 20.00 k, 200.0 k, 2M $\Omega$	400.0, 4.000 k, 40.00 k, 400.0 k, 4.000 m, 40.00 m $\Omega$	340.0, 3.400 k, 34.00 k, 340.0 k, 3.400 m, 34.00 m $\Omega$	5 k $\Omega$ , 500 k $\Omega$
<b>Diode</b>		Yes		N/A
<b>Continuity</b>		Yes		N/A
<b>Battery Test</b>	1.5 V, 9 V		N/A	1.5 V, 9 V



## True RMS Precision Digital Multimeters

These “top of the line” digital multimeters are affordable without sacrificing an array of features and functions. From True RMS to PC Connectivity. Amprobe’s Precision DMMs excel in the professional environment.

### AM-140 TRMS, AM-150 TRMS, AM-160 TRMS Precision TRMS Digital Multimeters with PC Connection

- True RMS (TRMS)
- AC/DC Voltage, Resistance, AC/DC Current, Frequency, Capacitance, and Temperature
- Data Logging (AM-150 only)
- Optical isolated PC interface capability
- MAX, MIN MAX-MIN recording
- Peak Hold
- Auto and Manual Ranging
- Data Hold
- Audible and visual warning against improper plug-in
- Relative zero mode
- DC Loop Current 4-20mA
- dBm reading with 20 selectable impedance values
- Backlight display
- Large, easy to read LCD display
- Audible continuity
- 50,000 count meter (AM-140, AM-160)



FEATURES	AM-150 TRMS	AM-140 TRMS	AM-160 TRMS
<b>AC Voltage</b>	50.00, 500.0 mV, 5.000, 50.00, 500.0, 1000 V	500.00 m, 5.0000, 50.000, 500.00, 1000.0 V	
<b>DC Voltage</b>	50.00, 500.0 mV, 5.000, 50.00, 500.0, 1000 V	500.00 m, 5.0000, 50.000, 500.00, 1000.0 V	
<b>Resistance</b>	50.00, 500.0, 5.000 k, 50.00 k, 500.0 k, 5.000 m, 50.00 mΩ	500.00, 5.0000 k, 50.000 k, 500.00 k, 5.0000 m, 50.000 mΩ	
<b>Current AC/DC</b>	500.0 μ, 5000 μ, 50.00 m, 500.0 m, 5.000, 10.00 A	500.00 μ, 5000.0 μA, 50.000 m, 500.00 m, 5.0000, 10.000 A	
<b>Frequency</b>	6 Hz to 125 kHz	5.0000 Hz to 200.000 kHz	
<b>Capacitance</b>	50.00 n, 500.0 n, 5.000 μ, 50.00 μ, 500.0 μ, 9999 μF	50.00 n, 500.0 n, 5.000 μ, 50.00 μ, 500.0 μ, 9999 μF	
<b>Temperature</b>	-50 °C to 1000 °C (-58 °F to 1832 °F)	N/A	Dual thermocouple -50 °C to 1000 °C (-58 °F to 1832 °F)
<b>Data Recording</b>	5400 Points	N/A	
<b>Duty Cycle</b>	N/A	0.1 % to 99.99 %	N/A

**Product Specific Optional Accessories:** The AM-150 TRMS, AM-140 TRMS and AM-160 TRMS are compatible with RS-232 KIT2, RS-USB and Download Suite.





## Heavy-Duty Multimeters

Choose from two heavy-duty digital multimeters that are designed for rugged use with extra features that make them better suited for field work. They offer extensive protection that will resist harsh and even abusive environments. Thicker case walls made from specialty plastics resistant to grease and chemical spills. They include rubber holsters, sealed and gasketed openings, shock-dampened mountings, extensive fusing and superior protection from overloads.

- CAT IV 1000 V rated meters
- Highest input voltage in any meter to 1500 V DC, 1000 V AC
- IP67 rated for protection against dust and immersion
- Drop proof to eight feet
- Digi-Glo™ backlight (HD160C)
- Oversized character displays for easy reading
- 30-minute Auto Power Off to preserve battery
- Magne-Grip™ Holster
- Heavy-Duty test leads with threaded alligator clips

The HD Series of DMMs is designed for professional use in harsh environments.

Both meters in the HD line have an extended voltage measurement capability of 1500 V DC and 1000 V AC, unmatched by any other line of digital multimeters. The extended voltage ranges can withstand transients up to 12 kV.

### HD160C Autoranging True RMS Heavy-Duty meter

- True RMS, 10,000-count
- Relative Max/Min/AVG, Hold and Range Lock
- Digi-Glo™ backlight
- Temperature, Capacitance and Frequency



HD160C



Includes CAT IV, 1000V test leads, TL1500



HD110C

MULTIMETERS

### HD110C General purpose Heavy-Duty meter

- Data Hold

FEATURES	HD110C	HD160C
<b>DC Voltage</b>	200.0 m, 2.000, 20.00, 200.0, 1500 V	1000.0 m, 10.000, 100.00, 1500.0 V
<b>AC Voltage</b>	200.0 m, 2.000, 20.00, 200.0, 1000 V	1000.0 m, 10.000, 100.00, 1000.0 V
<b>Current AC/DC</b>	200.0 $\mu$ , 2.000 m, 20.00 m, 200.0 m, 2 A	100.00 $\mu$ , 1000.0 $\mu$ , 10.000 m, 100.00 m, 400.0 m, 2.000 A
<b>Resistance</b>	200.0, 2.000 k, 20.00 k, 200.0 k, 2.000 m, 20.00 m $\Omega$	1000.0, 10.000 k, 100.00 k, 1000.0 k, 10.000 m, 40.00 m $\Omega$
<b>Diode</b>	Yes	N/A
<b>Continuity</b>	Yes	
<b>Frequency</b>	N/A	100.00, 1000.0, 10.000 k, 100.00 k, 1000.0 k, 10.000 MHz
<b>Capacitance</b>	N/A	40.00 $\mu$ f, 400.0 $\mu$ f, 4.000 $\mu$ f, 40.00 $\mu$ f, 400.0 $\mu$ F
<b>Temperature</b>	N/A	-20 $^{\circ}$ C ~ 1300 $^{\circ}$ C (-4 $^{\circ}$ F ~ 2372 $^{\circ}$ F)



DC205C

## Multimeters Chart

FEATURES/ MODEL #	38XR- A	37XR- A	34XR- A	33XR- A	30XR- A	35XP- A	15XP- A	5XP-A	AU92	AM-220	AM-240	DM73C
	Page 12	Page 12	Page 12	Page 13	Page 13	Page 14	Page 14	Page 14	Page 15	Page 15	Page 15	Page 15
Safety Rating	CAT IV 600 V CAT III 1000 V	CAT IV 600 V CAT III 1000 V	CAT III 600 V	CAT III 600 V	CAT III 300 V	CAT III 300 V CAT II 600 V	CAT III 300 V CAT II 600 V	CAT III 300 V CAT II 600 V	CAT III 600 V	CAT III 600 V	CAT III 600 V	CAT III 300 V CAT II 600 V
TRMS	•	•	•									
AC Voltage	750 V	750 V	750 V	750 V	600 V	750 V	750 V	750 V	600 V	600 V	600 V	600 V
DC Voltage	1000 V	1000 V	1000 V	1000 V	600 V	1000 V	1000 V	1000 V	600 V	600 V	600 V	600 V
AC Current	10 A	10 A	10 A	10 A	10 A	2 A	2 A	200 mA	10 A	10 A	10 A	
DC Current	10 A	10 A	10 A	10 A	10 A	2 A	2 A	200 mA	10 A	10 A	10 A	
Resistance	•	•	•	•	•	•	2000 mΩ	•	•	•	•	•
Capacitance	•	•	•	•		•				•	•	
Frequency	•	•	•	•		•			•	•	•	
Temperature	•		•	•		•			•		•	
Auto Ranging	•	•	•			•	•			•	•	•
Relative Zero	•	•	•	•						•	•	
Data Hold	•	•	•	•	•	•	•	•	•	•	•	•
Diode Test	•	•	•	•	•	•	•	•	•	•	•	•
Continuity Beeper	•	•	•	•	•	•	•	•	•	•	•	•
PC Connection Capabilities	•											
Max/Peak Hold	•	•	•	•	•			•		•	•	
Data Logging												
Duty Cycle	•	•	•						•	•	•	
DC Loop Current 4-20mA	•											
dBm Reading	•	•										
Inductance		•										
Logic Test		•					•					
Non-Contact Voltage Detection					•	•	•	•				
IP67												
AutoTest™ Function (V, A or R)												
RPM, Dwell Angle									•			
Battery Test					•			•				

## Multimeters Chart

FEATURES/ MODEL #	PM55A	PM53A	PM51A	DM7C	DM9C	DM78C	AM8C	AM-140 TRMS	AM-150 TRMS	AM-160 TRMS	HD160C	HD110C
	Page 16	Page 16	Page 16	Page 17	Page 17	Page 17	Page 17	Page 18	Page 18	Page 18	Page 19	Page 19
<b>Safety Rating</b>	CAT III 300 V CAT II 600 V	CAT III 300 V CAT II 450 V	CAT III 300 V CAT II 600 V	CAT II 600 V	CAT II 600 V	CAT II 600 V	CAT II 300 V	CAT IV 600 V CAT III 1000 V	CAT IV 600 V CAT III 1000 V	CAT IV 600 V CAT III 1000 V	CAT IV 1000 V (1500 VDC Max)	CAT IV 1000 V (1500 VDC Max)
<b>TRMS</b>							Analog	•	•	•	•	
<b>AC Voltage</b>	600 V	450 V	600 V	600 V	600 V	600 V	300 V	1000 V	1000 V	1000 V	1000 V	1000 V
<b>DC Voltage</b>	600 V	450 V	600 V	600 V	600 V	600 V	300 V	1000 V	1000 V	1000 V	1500 V	1500 V
<b>AC Current</b>	2000 mμA				10 A			10 A	10 A	10 A	2 A	2 A
<b>DC Current</b>	2000 mμA			200 mA	10 A		250 mA	10 A	10 A	10 A	2 A	2 A
<b>Resistance</b>	•	•	•	•	•	•	•	•	•	•	•	•
<b>Capacitance</b>	•	•	•					•	•	•	•	
<b>Frequency</b>	•	•	•					•	•	•	•	
<b>Temperature</b>									•	•	•	
<b>Auto Ranging</b>	•	•	•			•		•	•	•	•	
<b>Relative Zero</b>								•		•	•	
<b>Data Hold</b>			•			•		•	•	•	•	
<b>Diode Test</b>	•		•	•	•	•		•	•	•		•
<b>Continuity Beeper</b>	•	•	•	•	•	•		•	•	•	•	•
<b>PC Connection Capabilities</b>								•	•	•		
<b>Max/Peak Hold</b>			•					•	•	•	•	
<b>Data Logging</b>									•			
<b>Duty Cycle</b>								•		•		
<b>DC Loop Current 4-20mA</b>								•		•		
<b>dBm Reading</b>								•		•		
<b>Inductance</b>												
<b>Logic Test</b>												
<b>Non-Contact Voltage Detection</b>	•	•										
<b>IP67</b>											•	•
<b>AutoTest™ Function (V, A or R)</b>	•	•										
<b>RPM, Dwell Angle</b>												
<b>Battery Test</b>				•			•					

## Breaker Tracers

### ECB50A Three types of troubleshooting with one tool

The ECB50A is a microprocessor driven tracer that allows three types of troubleshooting: circuit breaker identification, wire tracing in walls, and wire sorting. The included transmitter module generates a custom coded signal that is injected into a powered AC line. The microprocessor-enabled receiver wand uses this encoded signal to reject noise and correctly identify the right circuit breaker or wire.

- Three Testers in one
- Identify circuit breaker to electrical socket
- Trace AC cables in walls
- Sort AC wires in a bundle
- Audible and visual indicators
- Includes sensitivity adjustment
- Cable tracing length to 500 ft nominal
- Cable tracing depth to 38 cm (15") nominal



FEATURES	SPECS
Transmitter Voltage range	100 V to 125 VAC
Frequency range	30 to 70 Hz

### BT-250 Breaker Tracer

Works on systems from 90 to 280 VAC and is used in residential and light commercial environments. A preferred solution for the latest in code requirements. Identify circuit breakers fast and efficiently.

- Identifies circuit breaker location
- Works on all electrical systems from 90 to 280 VAC
- Perfect for office, residential and HVAC applications
- Automatic sensitivity adjustment
- Microprocessor controlled
- Extremely accurate reading always finds the right breaker
- Durable and dependable
- Includes light fixture adapter and carrying case



FEATURES	SPECS
Transmitter Voltage range	90 to 280 VAC
Frequency range	40 to 70 Hz

## Residential Wire Tracer

### AT-1000 Wire Tracer

Amprobe's first tier advanced circuit tracer for basic applications where accuracy and routine troubleshooting are important.

- Trace energized lines up to 300 VAC or VDC
- Trace unenergized & open conductors
- Identifies breakers and fuses without powering down
- Locates shorts
- Identifies wires in a bundle
- Identifies control, alarm and telephone system wiring
- Traces coaxial cable shield
- Receiver range 1 to 3 feet from a cable being traced
- Ships with zippered protective carrying case

FEATURES	AT-1000
Trace energized lines up to 300 VAC or VDC	100 V to 125 VAC (X1000 Transmitter)
Range 1-3' from a cable being traced	R1000 Receiver



## Underground Wire and Pipe Locator

### AT-3000 PRO Underground Buried Wire & Pipes Locator

The AT-3000 PRO is designed to trace and locate underground wires and pipes to assist professionals in their most demanding tasks. Buried utility lines represent a major challenge to electricians who need to trace and trouble shoot such systems. They also represent a hazard to excavation crews. Improperly performed digging can cause cable or pipe damage resulting in personal injury, costly repairs and penalties. Use this versatile AT-3000 Pro to locate underground energized and de-energized wires, cables and pipes.

- Display indicates depth measurement up to 10 feet
- Measures up to 40 feet deep
- Precise pinpointing of buried services, exceptionally fast sound & meter response
- Patented Signal Processing - operates effectively in congested sites and sites with overhead cables.
- Locates underground energized and de-energized wires, cables and pipes
- Complete instrument, ready for use with receiver, transmitter, connection cable, ground stake and ground cable
- Visual (LCD) & Audible indicators
- Rugged Durable Construction
- "Real Sound" technology - the sound is derived from the signal radiating from the cable or pipe. This very important feature helps the user distinguish the signal from random background noise
- OPTIONAL ACCESSORIES:
  - SC-3000: 4" Dia. Signal Clamp (fits pipes over 2" in diameter)
  - M-3000: "Mouse" Transmitter

\* Product available in the US and Mexico only.



## Current Tracers

### CT-100, CT-326B Current Tracers

- Heavy duty, recommended for tough industrial applications
- Traces live wires buried underground or hidden behind walls up to 13' deep (CT-326B)
- Performs tests without having to interrupt power
- Locates breakers, neutral & ground lines
- Locates and traces wires in walls, floors, conduit, & computer cables
- Pinpoints shorts and ground faults
- Does not interfere with sensitive electronic equipment

FEATURES	CT-100	CT-326B
Traces energized wires without power interruption. Locates breakers without power interruption	9-300 V AC/DC	9-300 V AC/DC 300-600 V AC
Traces unenergized wires (wire continuity and wire grounded at the end). Pinpoints shorts and ground faults	T-100 Transmitter & 9 V batteries	Transmitter & 9 V batteries
Digital filter to assure cutting edge accuracy in noisy industrial environment		•
Sensitivity Settings	3	12



## Wire Tracers

### AT-2000 Series Wire Tracers



- Five models to choose from
- Traces live wires buried or hidden behind walls up to 13 feet deep
- Performs tests without having to interrupt power
- Locates and traces wires in walls, floors, conduit, computer cables, etc.
- Does not interfere with sensitive electronic equipment
- Traces unenergized and open (broken) wires
- Locates breakers, neutral & ground lines
- Pinpoints shorts, ground faults & broken wires



FEATURES	AT-2002	AT-2004	AT-2005
Traces energized wires without power interruption. Locates breakers without power interruption.	•	•	•
Traces unenergized wires (wire continuity and wire grounded at the end). Pinpoints shorts & ground faults.	•	•	•
Traces unenergized open wires (broken or disconnected wire). Pinpoints place where wire is broken.		•	•
Supplied with clamp-on attachment to inject signal without making a contact with bare wire.		•	•
Supplied with Battery. Booster to strengthen signal for open tracing.			•

KIT CONTAINS:	AT-2002	AT-2004	AT-2005
R-2000 Receiver	•	•	•
S-2600 Transmitter 9-600 V	•	•	•
T-2200 Transmitter for open tracing		•	•
Clamp-on Transmitter Accessory A2201CE		•	•
B2024 Rechargeable Battery Pack			•
B2025 Battery Pack Recharger			•
C2901 Cordset 110 Volt Plug to Banana Plugs	•	•	•
C2902 Cordset Alligator Clips to Banana Plugs		•	•



### ATGC-1 Ground Coil Accessory

- Traces and locates buried conductors like Highway Lighting Conductors, Main Electrical Feeds, Water Mains, and Telephone Lines
- Eliminates direct connection of transmitter
- No access to the conductor required
- Works with any AT-4000 or AT-2000 model

## Advanced Wire Tracers

### AT-4000 Series Advanced Wire Tracers

Amprobe's reputation for out-performing circuit tracers has just gotten better. These new and improved advanced tracers combine features and functions to make your job easier.

- One universal transmitter - automatically switches to work with either energized or non-energized systems
- Receiver not position sensitive - does not need to be rotated in order to provide accurate readings
- Precise sensitivity adjustment
- Traces live wires buried or hidden behind walls
- Traces energized and non-energized (open, broken) wires
- Performs tests without interrupting power
- Locates breakers, neutrals, & ground lines
- Locates and traces wires in walls, floors, conduit, computer cables
- Pinpoints shorts, ground faults and broken wires
- Does not interfere with sensitive electronic equipment

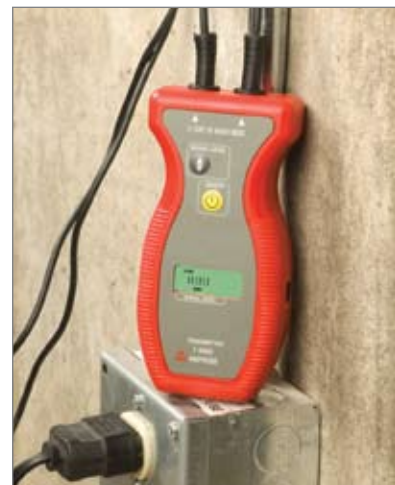


SPECS	RANGE
Transmitter Operating Voltage	9-600 V AC/DC
Operating frequency	32.786 kHz
Receiver short mode range and open mode range	20' in air from the traced wire under test conditions

FEATURES	AT-4001 CON	AT-4003 CON	AT-4004 CON	AT-4005 CON
Traces energized wires without power interruption. Locates breakers without power interruption.	•	•	•	•
Traces unenergized wires (wire continuity and wire grounded at the end). Pinpoints shorts and ground faults.	•	•	•	•
Traces unenergized open wires (broken or disconnected wire). Pinpoints place where wire is broken.	•	•	•	•
Supplied with clamp-on attachment to inject signal without making contact with bare wire.			•	•
Supplied with Battery Booster to strengthen signal for open tracing.				•

KIT CONTAINS:	AT-4001 CON	AT-4003 CON	AT-4004 CON	AT-4005 CON
Carrying Case	Soft SV-1000	Hard CC-AT-4000	Hard CC-AT-4000	Hard CC-AT-4000
Receiver R-4000 CON	•	•	•	•
Transmitter T-4000	•	•	•	•
110V Pigtail - Banana Plug Cord Set C2901	•	•	•	•
Alligator Clip - Banana Plug Cord Set C2902	•	•	•	•
Grounding Test Lead 25-ft. MTL-G	•	•	•	•
Alligator Clip for Ground Lead VRC-320	•	•	•	•
Clamp-on Transmitter Accessory A2202			•	•
Rechargeable Battery Pack B2024				•
Battery Pack Recharger B2025				•

Direct connection



Non-contact clamp-on connection





ISO-PRO



AMB-25

AMB-45

## Digital Insulation Testers

Model AMB-45 and AMB-25 have three selectable test voltages testing insulation, plus the AMB-45 has a built-in voltmeter and programmable timer and internal memory of 99 data points. The Telaris ISO-PRO's full suite of features translate into robust functionality. All three insulation testers are Download Suite software compatible.

### Telaris ISO-PRO Insulation Tester

- Insulation measurement
- Low Ohm measurement
- Voltage measurement
- Integrated memory for approx. 500 measurement values
- Standard, built-in IR RS-232 interface
- Software control for recording test results is available as option
- Pre-setable limit values for insulation measurement
- Test lead compensation function for exact zero adjustment
- Large digital and analog display



### AMB-45 Digital Insulation Resistance Tester

- Tests insulation of wires, cables, transformers and motors
- Comes as a complete kit including test leads, PC software and carrying case
- Three selectable test voltages up to 1000 V
- Built in voltmeter
- Sensitive Ohmmeter for checking resistance of motor windings
- Programmable timer to perform the Dielectric Absorption Ratio Test
- Internal memory, 99 datapoints
- Data download to PC



### AMB-25 Digital Insulation Resistance Tester

- Test insulation of wires, cables, transformers and motors
- Selectable test voltages up to 1000V
- Button Lock for Dielectric Absorption Ratio Test
- Sensitive Ohmmeter for checking resistance of motor windings
- Internal memory (stores 9 readings)
- Comes as a complete kit including test leads



FEATURES	AMB-45	AMB-25	ISO-PRO
Insulation resistance (100 VDC)	N/A		1.999 mΩ
Insulation resistance (250 VDC)	4.000, 40.00, 400.0, 4000 mΩ	40.00, 400.0 mΩ	19.99 mΩ
Insulation resistance (500 VDC)	4.000, 40.00, 400.0, 4000 mΩ	400.0, 1000.0 mΩ	199.9 mΩ
Insulation resistance (1000 VDC)	4.000, 40.00, 400.0, 4000 mΩ	400.0, 2000.0 mΩ	1999 mΩ
Resistance(9V)	400.0, 4000 Ω	999.9 Ω	19.99 mΩ
Voltage AC/DC	600.0V	N/A	500 V
Product Specific Optional Accessories: The AMB-45 is compatible with RS-USB and Download Suite.			



## 5000V Insulation Testers

Rugged design for 5000 Volt applications, but delicate features to ensure proper testing and recording of insulation measurements. Both the AMB-5KV-D and AMB-5KV offer a built-in voltmeter. The AMB-5KV-D goes further with numerous test voltage increments for testing insulation as well as internal memory and programmability.

### AMB-5KV-D MEGATEST 5000 Digital Insulation Resistance Tester

- Tests insulation of wires, cables, transformers, motors and generators
- Comes as a complete kit including test leads and PC software
- Built in automatic voltmeter up to 5000 V warns against hazardous energized systems
- Programmable setups of test voltages and timers
- Performs the dielectric absorption ratio test
- One testing instrument for low and high voltage systems
- Internal memory, measurements can be stored for future reference
- Data download to PC
- Rugged, durable case



### AMB-5KV Digital Insulation Resistance Tester

- Tests insulation of wires, cables, transformers, motors and generators
- Test voltages 500, 1000, 2500, 5000 VDC
- Measuring range 500 K thru 500 G ohms
- Built-in voltmeter 0 – 600 Volts AC/DC (Accuracy:  $\pm 2\%$  of full scale)
- Lock feature applies testing voltage continuously for Dielectric Absorption Ratio Test
- Automatic discharge of equipment capacitance for operator safety



FEATURES	AMB-5KV-D	AMB-5KV
Insulation resistance (500 VDC)	100 k to 100 G $\Omega$	500 k to 100 G $\Omega$
Insulation resistance (1000 VDC)	100 k to 250 G $\Omega$	500 k to 250 G $\Omega$
Insulation resistance (250 VDC)	100 k to 500 G $\Omega$	500 k to 500 G $\Omega$
Insulation resistance (5000 VDC)	100 k to 500 G $\Omega$	500 k to 500 G $\Omega$
Voltage AC/DC	500, 5000 V	600.0 V

**Product Specific Optional Accessories:** The AMB-5KV-D is compatible with RS-232 KIT2, RS-USB and Download Suite.

## Machinery Tester

### ALLTEST-US

- Insulation measurement 500 V DC
- Continuity testing (10 A AC), resistance and voltage drop
- Continuity testing, 6 V AC/10 - 25 A AC
- Withstanding voltage to 4000 V
- Leakage current 0 - 50 mA
- Residual voltage measurement
- Includes Download Suite software
- Specification of limit value
- Acoustic signal for „OK“, „Fault“ and „Warning“
- 700 memory locations
- Rugged waterproof case
- Safety acc. EN 61010-1, CAT III/600V, EN 60204-1





## Analog Insulation Testers

### AMB-2, AMB-3 Insulation Testers

- Tests insulation of wires, cables, transformers and motors
- Battery powered
- Helps cut unscheduled downtime and reduce shock hazards
- Sensitive Ohmmeter for checking resistance of motor windings (AMB-2)
- Built in voltmeter
- Battery OK test
- Mirror scale
- Automatic discharge of equipment capacitance for safe removal of test leads

FEATURES	AMB-2	AMB-3
Insulation resistance with 250 VDC test voltage	0-50 m $\Omega$	N/A
Insulation resistance with 500 VDC test voltage	0-100 m $\Omega$	0-1000 m $\Omega$
Voltmeter	0-600 V AC/DC	0-600 V AC
Low resistance (300 mVDC)	0-100 $\Omega$	N/A

## Hand Cranked Insulation Testers

### AMC-2, AMC-3, AMC-4 Hand Cranked Insulation Testers

These hand cranked insulation testers allow for remote operations, keeping the user free from dependence on batteries.

- Tests insulation of wires, cables, transformers and motors
- The test voltage is obtained by means of a hand cranked, constant voltage generator
- Does not require batteries or any external power supply
- Sensitive Ohmmeter for checking resistance of motor windings
- Terminal eliminates effect of any surface leakage that may influence readings
- Light and smooth operating crank
- Rugged cross coil movement
- High impact housing
- Spring loaded terminal connection



FEATURES	AMC-2	AMC-3	AMC-4
Insulation resistance with 500 VDC test voltage	0-100 $\Omega$	N/A	0-100 m $\Omega$
Insulation resistance with 1000 VDC test voltage	N/A	0-500 m $\Omega$	0-500 m $\Omega$
Low resistance	N/A	0-200 $\Omega$	N/A

## Ground Resistance Testers

Ensure safe operation and reduce power quality problems with these two lightweight but powerful Amprobe ground resistance testers. Use the DGC-1000A for resistance checks, including indoor checks. The GP-2 is a useful tool for installation and trouble shooting.

### GP-2 GEOTEST Ground Resistance & Resistivity Tester

- Measures Earth ground resistance, 3 point (fall of potential) or 2 point tests
- Automatically calculates resistivity, 4 point test
- Automatic voltage measurement prevents false measurements
- Automatically applies three testing frequencies for the most accurate readings
- Test leads, auxiliary electrodes, optical serial cable and software are included
- Auto Ranging
- 999 internal memory locations to store measurements
- RS-232 download to PC
- OPTIONAL ACCESSORIES:
  - RS-USB: USB to RS-232 Adapter
  - Download Suite: PC Software



GP-2 GEOTEST



### DGC-1000A Clamp-on Ground Resistance Tester

- TRMS current measurement including leakage current
- Data logging capability - 116 records
- Individual data point recording
- User selectable High & Low ohm audible alarms 1/2
- Simple and easy to use, no test leads or auxiliary electrodes necessary



### TELARIS EARTH-TEST Earth Resistance Tester

- Earth resistance measurement
- Specific earth resistance measurement
- The integrated constant current measurement principle allows the application in sandy as well as in rocky environments
- Monitoring and display of auxiliary earth and probe resistances
- Displays of the actual test current
- Automatic and manual and frequency selection for noise reduction
- Test voltage preselection
- Clear and large LCD providing the user with an optimum visual indication of both test values and limits
- Auto Power Off
- Earth resistance measurement 2/3 and 4-pole
- Specific earth resistance measurement in compliance with the Wenner principle



FEATURES	GP-2	DGC-1000A	EARTH-TEST
Ground Resistance	1999 Ω	1500 Ω	19.99/199.9/1999 Ω
Ground Resistivity	199.9 kΩm	N/A	N/A
AC Current	N/A	10.00 A	N/A
AC Voltage	0-500.0 V	N/A	N/A



## Multifunction Recorder and Insulation Ground Resistance Testers

### DM-III Multitest & DM-III Multitest F Power Quality Recorders

Amprobe's DM-III Multitest full-featured Three Phase Power Quality Recorders provide the essential functions and capabilities to maintain, diagnose and troubleshoot electrical systems.

The DM-III Multitest is a multitasking device that provides everything an electrical engineer or a technician needs to perform maintenance or installations on the electrical system. The DM-III Multitest measures and records three phase: voltage, current, voltage anomalies (sags or surges), harmonics, energy and power (active, reactive and apparent), power factor (true and displacement), frequency and phase sequence. It can test wires and motors for proper insulation, as well as it can measure the resistance of the grounding systems and resistivity of the soil. On board memory makes it a perfect tool for preventive maintenance applications.

#### ■ POWER QUALITY ANALYZER/DATA LOGGER

- True RMS (TRMS)
- Measures & Records Broad Spectrum of Power Quality Parameters
  - AC Current
  - AC Voltage to 600 V
  - Sags and Surges
  - Harmonics
  - Active, Reactive and Apparent Power
  - Peak Demand
  - Power Factor
  - Frequency
  - Phase Sequence
- Compatible with wide range of current transducers
- Works with single and three phase
- Detects & records Sags and Surges
- Displacement power factor for power factor correction determination
- Built in scope displays waveforms
- Phase sequence indication
- Records up to 64 parameters
- Selectable fundamental frequency
- Special data compression system
- Download capabilities, Windows compatible
- A complete kit: CTs, Voltage Leads, Ground Probes & Leads, PC software & cable
- 3000 A Flexible CT included with DM-III Multitest F only





#### ■ INSULATION TESTER FUNCTIONS:

- Tests insulation integrity of wires, cables, transformers & electrical motors
- Selectable test voltages up to 1000 V
- Programmable timer to perform the Dielectric Absorption Ratio Test
- Sensitive Ohmmeter for checking resistance of motor windings
- Selectable polarization of ohmmeter for checking grounding continuity
- Automatic voltmeter protects against misuse on hazardous energized systems

#### ■ GROUND RESISTANCE & RESISTIVITY FUNCTIONS:

- Three measuring modes;
  - 2 point continuity/resistance test
  - 3 point Fall of Potential test
  - 4 point Earth Resistivity measurement
- Automatic voltage measurement prevents false measurements
- Automatically applies three testing frequencies for the most accurate readings
- Detects faulty test conditions such as poor soil conditions and input noise

#### ■ PHASE SEQUENCE

- Phase sequence indication
- Frequency measurement
- Phase -to -Phase voltage measurement

#### ■ OPTIONAL ACCESSORIES

- DM-CT-100: 100 A Clamp
- DM-CT-HTA: 1000 A Clamp
- AM-FLEX33: 3000 A Flexible CT
- CC-DM-III: Hard Carrying Case, Lockable
- RS-USB: USB-RS-232 Adapter



Optional Hard Carrying Case, CC-DM-III



DM-III Multitest F with Flex CT's

FEATURES:	DM-III MULTITEST	DM-III MULTITEST F
<b>POWER</b>		
AC Voltage	600 V	
AC Current	1000 A	3000 A
Optional CT's	100 A/3000 A	100 A
Harmonics	THD, DC to 49th	
Power	W, VAR, VA	
Energy	Wh, VARh, VAh	
Voltage Anomalies	Sag/Surge	
Power Factor	0.00 ±1.00	
Frequency	50/60 Hz	
Phase Sequence	1-2-3	
<b>INSULATION TESTER</b>	50 V, 100 V, 250 V, 500 V, 1000 V	
<b>GROUND RESISTANCE</b>	Resistance & Resistivity	

## Power Quality Recorder

### DM-4 Simultaneous Multifunction Recorder



The DM-4 addresses the needs of the most demanding Power Quality professionals. The device incorporates full set of measuring features crucial for complete Power Quality analysis. An innovative Remote User Interface (PDA) allows safe, easy and convenient operation of the device remotely. Remote User Interface (PDA) is also used for data viewing, analysis and transfer.

- True RMS Measurement
- Kit Includes: carrying case, CTs, test leads, PC software, Remote User Interface with protective hard case and interface cable are included with product
- Rugged Remote User Interface with memory for easy data downloads in the field and increased safety
- Works with single (two and three wire) and three phase systems (Y and Delta)
- Detects and records voltage sags & surges
- Built in scope displays waveforms
- Detects and records voltage spikes 100 nS or slower
- Records all parameters simultaneously
- Selectable fundamental frequency of 50 or 60 Hz
- Special data compression system and user selectable rates allow recording from several hours to several years
- Download capabilities with Windows PC software or PDA
- OPTIONAL ACCESSORY:
  - DM-CT-100: 100A Clamp

FEATURES:	DM-4
<b>POWER</b>	
AC Voltage	1000 V
AC Current	1000 A
Optional CT's	100 A
Harmonics	THD, DC to 51st
Power	W, VAR, VA
Energy	Wh, VARh, VAh
Voltage Anomalies	Sag, Surge, Spikes
Power Factor	0.00 ±1.00
Frequency	50/60 Hz
Phase Sequence	1-2-3



## Power Quality Data Loggers

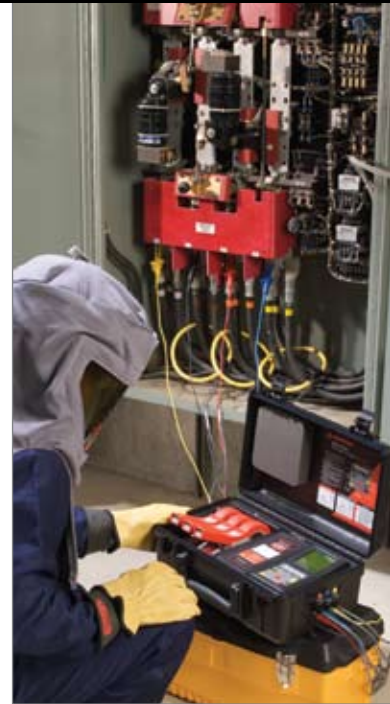
### DM-II® PLUS Data Logger

This unique product comes as a complete kit with CT's and Windows compatible PC software. It measures and records broad spectrum of power quality parameters.

- AC Current up to 1000 A, AC Voltage, Active, Reactive and Apparent Power, Energy, Peak Demand & Power Factor
- All readings are True RMS
- 5 built-in selectable languages: English, French, Italian, German and Spanish
- User selectable rates allow recording from one hour to several months
- Works with single & three phase systems (Y & delta)
- Readings and charts can be viewed on the DM-II LCD screen or downloaded to a PC
- Capable of recording all parameters (single or three phase) simultaneously
- Optional transducers available for 100 A and 3000 A (flexible) current capability.



FEATURES:	DM-II PLUS
<b>POWER</b>	
AC Voltage	600 V
AC Current	1000 A
Optional CT's	100 A / 3000 A
Harmonics	THD, DC to 49th
Power	W, VAR, VA
Energy	Wh, VARh, VAh
Voltage Anomalies	Sag/Surge
Power Factor	0.00 ±1.00
Frequency	50/60 Hz
Phase Sequence	1-2-3
<b>Optional Accessories:</b> <b>DM-CT-100</b> Current transducer, 100 A <b>AM-FLEX33</b> Flexible current transducer, 3000 A	



## Air Flow / CFM

Ideal for HVAC/R technicians, electricians, research, industrial process and quality control

### TMA10A Anemometer with flexible precision vane

- Measure air velocity FPM or air volume CFM
- Input the surface area for accurate air flow measurements
- Precise thermistor for temperature
- Continuous moving average results for up to two hours
- MIN/MAX/AVG readings
- Air velocity average for eight multiple points
- Data Hold to freeze measurement
- RS232 output with optional TM-SWA cable and software,
- Deluxe hard carrying case



FUNCTION	RANGE	ACCURACY
Air Velocity m/s	0.40 m to 25.00 m/s	± 2 % of full scale
ft/min	125 ft to 4900 ft/min	± 2 % of full scale
Air Flow cm/s	0.01 m to 99.99 m <sup>3</sup> /sec	0 to 9.999 m
cf/m	1 ft to 9999 ft <sup>3</sup> /min	0 to 9.999 ft
Air Temp. °C (°F)	0 °C to 50 °C (32 °F to 122 °F)	± 0.8 °C (1.5 °F)

### TMA40 Anemometer, Relative Humidity and Temperature

The Amprobe TMA40 provides three measurements in one. Choose between single point measurement, multiple points up to 99, or the added feature of data logging up to 2400 data points. User sets the measurement interval time from 1 to 200 seconds. For accurate CFM results, the user simply inputs the area of the air source. TMA40 ships with RS232 interface cable, Software CD, hard carrying case and user manual.

- Three measurements in one meter
- Air velocity (FPM) or air volume (CFM), RH, Temperature
- Large digital display with Backlight
- Flexible measurement vane for accessing difficult areas
- RS232 Output for data result usage
- Measure multiple points up to 99
- Data Logging of Measurements, 2400 data points
- Set display results for Metric or English



FUNCTION	RANGE	RESOLUTION	ACCURACY
Air Velocity	0.4 to 32 m/s	0.1 m/s	+ 3 %
Air Volume	.0 to 99999 (CFM or CMM)	0.1 CMM or 1 CFM	± 3 %
Temperature	-20 °C to 70 °C (-4 °F to 158 °F)	0.1 °C / 0.1 °F	± 0.6 °C
Relative Humidity	0 to 100 %	0.1 %	± 3 % at 25 °C

## Temperature

### TMD90A Dual input digital thermometer w/ triple display

- Triple display of T1, T2, T1 - T2, plus relative time stamp
- Dual inputs for easy super-heat and sub-cool temperature measurements
- Deluxe hard carrying case, 2 Type K probes
- Accepts Type J, K, T, R, S, E thermocouple inputs
- RS232 output with optional TM-SWA cable and software



SPECS	RANGE	ACCURACY
Type K	-200 °C to 1370 °C (-328 °F to 2498 °F)	0.1 % rdg + 0.7 °C (0.1 % rdg + 1.4 °F)
Type J	-200 °C to 760 °C (-328 °F to 1400 °F)	0.1 % rdg + 0.7 °C (0.1 % rdg + 1.4 °F)
Type T	-200 °C to 390 °C (-328 °F to 730 °F)	0.1 % rdg + 0.7 °C (0.1 % rdg + 1.4 °F)
Type R & S	0 °C to 1760 °C (32 °F to 3200 °F)	0.3 % rdg + 0.7 °C (0.1 % rdg + 1.4 °F)
Type E	-200 °C to 736 °C (-328 °F to 1832 °F)	0.3 % rdg + 0.7 °C (0.1 % rdg + 1.4 °F)



## TMD-10 Dual Temperature Portable Thermometer

The TMD-10 is a completely portable dual input thermometer. With a digital dual display that displays T1, T2 and T1-T2. Choose between Celsius or Fahrenheit degrees measurement results. The TMD-10 will store and later display your minimum and maximum values. Will measure temperature with either Type K or Type J thermocouples. Ships as a complete kit with carrying case, two Type K probes, battery and manual.

- Dual Temperature Portable Thermometer, TMD-10
- Compatible with K and J type thermocouples
- Dual temperature for easy Super-Heat and Sub-Cool calculations
- Selectable ° F or °C
- Min/Max recording
- Relative reading (T1 – T2)
- Hold function to retain reading on the screen for later viewing
- Temp probe offset control
- Includes carrying case, battery and two K-type probes



THERMOCOUPLE	RANGE	ACCURACY
K-type	-328 °F to +2498 °F (-200 °C to +1370 °C)	± (0.05 % + 1.4 °F)
J-type	-328 °F to +1922 °F (-200 °C to +1050 °C)	± (0.05 % + 0.7 °F)

## TM45A Type K single input thermometer for HVAC/R contractor, plant maintenance, commercial building service

- Unique, mini-stick design thermometer
- Small, go-anywhere size
- Type K thermocouple compatible
- °F/°C and 1°/0.1° selectable
- Data and max hold
- Type K probe and carrying case included



## TPP1-F1/TPP1-C1 Immersion Probe Pocket Thermometer

TPP2-F1/TPP2-C1 Available with same features as TPP1 but with a surface probe for flat surface contact

- Fahrenheit and Celsius versions
- 0.1 °C (0.1 °F) resolution
- Easy-to-read digital display
- Data Hold to freeze display
- Temperature ranges: -50 °C to 250 °C (-50 °F to 480 °F)
- Protective probe sleeve (TPP1 only)



## Infrared Thermometer

### IR608A IR Thermometer Laser Pointer

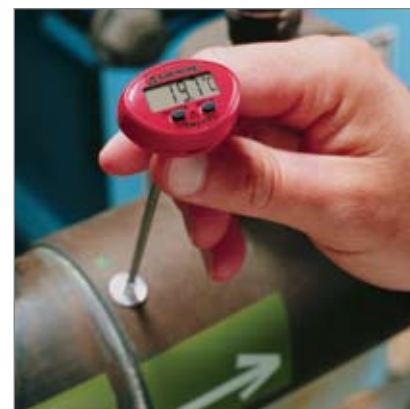
A quick and effective diagnostic tool for identifying problems in a wide variety of applications like HVAC/R, fire safety and protection, industrial, maintenance, automotive.

- Laser pointer for easy targeting
- "Pistol grip design" for comfortable grip
- Display Hold
- Backlit display
- Fast response time
- 8:1 Field of view

SPECIFICATIONS	IR608A
Range	-18 °C to 400 °C (0 °F to 750 °F)
Distance to spot size	8:1 ratio
Resolution	0.5
Accuracy	± 2 % of reading or ± 3.5 °F (± 2 °C), whichever is greater
Emissivity	Pre-set 0.95



Surface Probe





THWD-3

## Relative Humidity

These temperature meters use a precision capacitance sensor to deliver accurate performance with long term stability. These high accuracy instruments measure the full range of relative humidity from 0% to 100%

### THWD-3 Relative Humidity Temperature Meter

- Dual display
- Extended probe stem to easily access air ducts
- Dew Point, wet bulb
- Min/Max readings
- Data Hold
- Capacitive sensor with protective cover
- Auto Power Off
- Carrying Case



### TH-3 Relative Humidity Temperature Meter

- Dual display
- Relative function monitors humidity and temperature changes
- Extended probe stem to easily access air ducts
- Min/Max readings
- Data Hold
- Capacitive sensor with protective cover
- Auto Power off
- Soft Carrying Case



SPECIFICATIONS	
TH-3 & THWD-3 %RH Accuracy @ 23 °C	<10, >90 %RH ± 5.0 %RH 10 to 90 %RH ± 3.0 %RH Temperature coefficient: 0.1x (specified accuracy) / °C (<23 °C or >23 °C)
Temperature Accuracy	-20 °C to 60 °C ± 0.8 °C -4 °F to 140 °F ± 1.6 °F
THWD-3 (only) Wet Bulb & Dew Point Temperature Accuracy	-20 °C to 60 °C ± 0.8 °C -4 °F to 140 °F ± 1.6 °F

### TH-1 Compact Probe Style Relative Humidity Meter

Take Amprobe's TH-1, a small portable RH/Temp meter anywhere for those quick comfort-level measurements. Offers an easy-to-read dual digital display with Data Hold to freeze measurement result on the screen. Uses a precision capacitive RH sensor with twistable protective cap.

- Compact size goes and measures anywhere
- Dual display for RH and Temperature
- Put meter into metric or English
- Wet bulb, dew point
- Stores Min/Max readings for comparisons
- Data Hold function



FEATURES	RANGE	ACCURACY
Relative Humidity	0 - 100%	±3% at 25 °C 10 - 90%
Temperature	-20 °C to 50 °C (-44 °F to 122 °F)	±1 °C (2 °F)



## THWD-5 Relative Humidity and Temperature Meter with Wet Bulb and Dew Point

Amprobe's THWD-5 psychrometer is a microprocessor-based unit. Designed for HVAC and Plant Maintenance engineers and technicians. Easy and quick access to Wet bulb and Dew point values as well as Relative Humidity and Temperature. The THWD-5 is equipped with an extended probe for easy target access, a large dual LCD display, and is tripod mountable.

- Four measurements in one meter
- Relative Humidity, Temperature, Dew Point and Wet Bulb
- Extended probe for easy target access
- Large digital dual display with backlight
- Dual display of humidity and temperature, wet bulb or dew point
- Temperature in °C or °F
- 0.1 degree resolution for temperature
- Minimum and Maximum measurements stored
- Data Hold to freeze last measurement reading
- Tripod mountable



FEATURES	RANGE	ACCURACY
Relative Humidity	0 - 100%	±3% from 10 - 90% (at cal temp) ±5% for other
Temperature	-10 °C to 60 °C (14 °F to 140 °F)	±0.6 °C (±1 °F)
Dew Point Temp	-73.4 °C to 59.9 °C (-100.0 °F to 139.8 °F)	
Wet Bulb Temp	-13.4 °C to 59.9 °C (7.88 °F to 139.8 °F)	



## Ultrasonic Leak Detection

When leaks occur they often generate an ultrasonic frequency that is beyond human hearing. Amprobe's ULD-300 converts these sounds into an audible range for easy detection. The ULD-300 tests pressurized air lines, refrigeration systems, steam lines for leaks. Quickly and easily locate a leak location with this unique device. In areas where leaking gases are not sufficiently pressurized, use the TMULD-300 which includes an ultrasonic transmitter. Check for door or trunk seals, windshield leaks. The transmitter creates ultrasonic sound waves for detecting cracks and leaks.

### ULD-300 Ultrasonic Leak Detector

- Locates arcing in an electrical system
- Useful in finding the ends of buried PVC pipes
- Includes Parabola shield to reduce background noise, extension tube to access difficult or dangerous areas
- Detects any pressurized gas leak regardless of type CFC's, HFC's, Nitrogen, etc. (non-combustible gas)



### TMULD-300 Ultrasonic Leak Detector with Ultrasonic Transmitter

- Same features as ULD-300
- Includes transmitter
- Transmitter "pressurizes" area with ultrasonic sound
- Applications include air/water tightness of cars or houses





## Temperature and RH Dataloggers

### TR100 and TR200

#### Temperature/RH Data Logger with Digital Display

Amprobe's Model TR100 and TR200 takes both temperature and relative humidity reading in one compact size unit. Unit requires PC for initial set up. Use the included Amprobe software for recording measurements to your personal computer. Set up these parameters for recording: Sample interval timing, Start/Stop, Date and Time, HI/LO Alarm Threshold, Unit Selection, and number of Memory points.

- Instrument for indoor air quality monitoring
- Wall mountable
- Digital display
- Air Temperature displays in °C / °F
- Offers visible LEDs warnings to monitor IAQ condition
- Small size design with RS232 interface
- Memory points selection : 1000, 2000, 4000, 8000, 12000, 16000
- Includes RS232 Cable, Download Suite Software CD and Battery
- IP65 rated for dust and moisture



### TR300 Temperature and RH Data Logger

Amprobe's Model TR300 data logger takes both temperature and relative humidity readings in one compact size unit. Use the included Amprobe software for recording measurements to your personal computer. Set up these parameters for recording: Sample interval timing, Start/Stop, Date and Time, HI/LO Alarm Threshold, Unit Selection, and number of Memory points.

- Instrument for indoor air quality monitoring
- Wall mountable, self-standing or tripod mountable
- Extra large triple digital display
- Interchangeably displays date & time on screen
- Temperature, Dew Point or wet bulb
- Temperature / RH in one model
- Offers both visible LEDs plus audible warnings to monitor IAQ condition
- Small size design with USB interface.
- Memory points selection: 1000, 2000, 4000, 6000, 8000, 12000, 16000
- Includes USB Cable, Download Suite Software CD, Feet, Battery



TR300



FEATURES:	TR100	TR200	TR300
Dual Display LCD	N/A	N/A	Yes
Air Temperature Reading	-40 °C to 85 °C (-40 °F to 185 °F)	-40 °C to 85 °C (-40 °F to 185 °F)	-20 °C to 70 °C (-4 °F to 158 °F)
Temperature Accuracy	±0.6 °C (±1 °F)	±0.6 °C (±1 °F)	±0.6 °C (±1 °F)
RH Reading	N/A	0.0 to 99.9 %	0 to 100 %
RH Accuracy	N/A	±% at 25 °C / 77 °F	±3% from 10 - 90%
Recording	16 k	16 k	16 k
Dew Point Reading	N/A	N/A	Yes
On Screen Programmable	N/A	N/A	Yes
Software Programmable	Yes	Yes	Yes



## Gas Leak Detectors

### CM100 Carbon Monoxide Meter

The Amprobe CM100 is a compact size CO meter for measuring and displaying the presence of carbon monoxide and at what level. You can set the meter's alarm to alert when CO level goes beyond a pre-determined safety level. The CM100 User manual has a chart of published safety levels for CO. CM100 ships with battery, carrying case and user manual.

- Adjustable CO warning level
- Dual digital display
- Backlight for viewing in dim areas

- Auto Power Off
- Self-Test feature



FEATURE	RANGE	ACCURACY
CO	0-999 ppm	± 20 % at 0 - 100 ppm ± 15 % at 100 - 500 ppm (at 20 °C ±5 %, 50 % RH ±20 % RH)



CM100

### GSD600 Gas Leak Detector

The Amprobe GSD600 is a fast responding gas leak detector for methane and propane gas. The meter emits a frequency tone when gas is detected. The frequency of the beep coincides with the concentration of the gas. The LEDs display the level of gas present in an area or room. Pinpoint gas leaks for closed piping systems. Use the mute function in quiet work areas and utilize the LED displays.

- Detects Methane and Propane gas
- Quickly identifies and pinpoints gas leaks
- Automatic calibration feature
- 5 level LED leak alarm

- Flexible probe to access difficult measurement areas
- Auto Power Off



FEATURE	RANGE
Methane	40 to 640 ppm
Propane	35 to 580 ppm
Sensitivity	35 ppm (propane)



## Ultrasonic Distance Meters

### UDM45 Ultrasonic Distance Meter with Laser

Use Amprobe's UDM45, Ultrasonic Distance Meter with laser pointer to quickly and accurately measure the area and/or volume of a room. This easy-to-use device will display in either feet or meters and measures up to a 49 foot length (15 m).

- Quickly measure the area of a room
- Laser pointer for easy targeting
- Choose between feet or meter

- Calculates area and volume
- Adds together two measurements
- Measures up to 49 ft (15 m)



UNIT OF MEASURE	FREQUENCY	RANGE
Foot or Meter, Accuracy: ±0.5 %	40 kHz (ultrasonic pickup)	0.5 to 15 m (1.4 to 49 feet)





## Differential Pressure

### MAN02 Hand Held Manometer

The Amprobe MAN02 is a portable, battery operated pressure measuring device. The right tool for HVAC/R technicians measuring pressure level, or anyone working with valves.

Large dual digital display shows gauge or pressure values. It also has a relative time clock for measuring when events happen. Such as minimums and maximum values. Or use the RS232 output to record continuous measurement values. RS232 cable sold separately. Amprobe's Download Suite software available online.

- Reads gauge and differential pressure
- Five selectable units of measure:  
InH<sub>2</sub>O, psi, mbar, bar, mmH<sub>2</sub>O
- Ideal for measuring HVAC/R pressure
- Offers Maximum and Minimum value recordings, Data Hold
- Auto Power Off function
- Large back-light LCD
- Built-in RS-232 port downloads information to your PC with optional PC cable and Amprobe's free Download Suite software
- Includes connection hoses and hard carrying case



PRESSURE RANGE	ACCURACY
0 to $\pm 2$ psi	$\pm 0.3$ % of full scale at $\pm 25$ °C (77 °F)

## Combination Tachometer

### TACH20 Tachometer Combo Contact and Non-Contact

With an exceptional design, the Amprobe TACH20 hand-held tachometer can accurately measure rotational or surface speed as well as length. It comes with a large LCD display that allows the user to easily read the displayed measurement. It also has a built in memory function that permits the user to store automatically the maximum, the average, the minimum, and the last value read.

It comes with all the necessary accessories designed with optimal mechanical stability to ensure accurate, reliable, and repeatable measurements. In addition to the mechanical adapter that accepts a variety of tips, as well as the surface speed wheel, the TACH20 can perform non-contact measurement by using the infrared beam function.

- Measures rotational, surface speed and length
- Built-in memory for Max, Min, Avg and Last Value
- Digital Display
- Auto Power Off function
- Easy to select units and mode functions
- Contact and non-contact measurement
- Select rpm using Infrared beam or adapter: m/min, m/sec, ft/min, ft/sec, in/min, m, ft, and in.
- Includes 4 Adapters, Carrying Case, Reflective Tapes and Battery



ACCURACY	MEASURING RANGES (RPM)	SENSING DISTANCE (optical)
$\pm 0.02$ % v. reading $\pm 1$ Digit	Optical 1 to 99,999 RPM Mechanical 1 to 19,999 RPM Length 0 to 99,999 m (0 to 99,999 ft / 0 to 99,999 in)	max 600 mm (24 in)



## Light Meters

### LM-120 Light Meter with Auto Ranging

The Amprobe LM-120 light meter measures the visible light from fluorescent, metal halide, high-pressure sodium or incandescent sources. It is a portable, easy-to-use digital light meter designed for simple one-hand operation reading in Lumen (lux) or footcandle (fc) units. The LM-120 measures a wide range of light. This unit is Autoranging plus manual ranging with ability to Zero out the reading before taking a measurement.

- Measure in Lux or Footcandles
- Silicon photodiode sensor and filter
- Data Hold to freeze reading on the digital display
- MIN / MAX ability to show high and low readings
- Auto Ranging plus Manual Range
- Zero function to null display before a reading
- Auto Power Off to save battery life
- Includes protective sensor cap
- Large, 3-1/2 digit display



LM-120

### LM-100 Light Meter

The Amprobe LM-100 light meter measures the visible light from fluorescent, metal halide, high-pressure sodium or incandescent sources. It is a portable, easy-to-use digital light meter designed for simple one-hand operation reading in Lumen (lux) or footcandle (fc) units. The LM-100 measures a wide range of light up to 20,000 fc or lux with an accurate, high resolution of 0.01 fc/lux.

- Measure in Lux or Footcandles
- Silicon photodiode sensor and filter
- Data Hold to freeze reading on the digital display
- Auto Power Off saves battery
- MIN / MAX ability to show high and low readings
- Includes protective sensor cap
- Large, 3-1/2 digit display



### LM631A Digital Light Meter

This instrument is a portable, easy-to-use, 3-1/2-digit, compact sized digital light meter designed for simple one-hand operation reading in lux or fc units. Pressing the PEAK button for more than 2 seconds turns the backlight on and off. There is also an auxiliary output at the microphone jack (2.5 mm) connector that is active as long as the light meter is turned on.

- Measures wide range of light up to 20,000 fc or lux, front panel switchable
- Sensor dome has 114 cm (45 in) extension cable
- Built-in CIE spectrum curve for accurate human eye response
- Peak Hold and Data Hold
- Large 3-1/2 digit display with backlight
- Rugged Valox® case



FEATURES:	LM-120	LM-100	LM631A
<b>Zero</b>	Automatic/Manual	Automatic	Automatic
<b>Illumination Sensor</b>	Silicon photodiode and filter		
<b>Range Lux</b>	20, 200, 2000, 20000, 200000		
<b>Range Foot Candles</b>	20, 200, 2000, 20000		
<b>Calibration Point</b>	2854 °K Cosine Angluar corrected per JIS C 1609:1993 and CNS 5119 general A class		
<b>Data</b>	Hold, MIN/MAX		Hold, Peak
<b>Analog Output</b>			1 mV = 1 lux or 10 mV = 1 fc,

## Sound Meters

### SM-10 and SM-20 Sound Meter

The Amprobe SM-10 Sound Level Meter has been designed for audible sound level measurements. The A weighting is for general noise sound level and the C weighting is for measuring sound level of acoustic material control in various environments.

The Amprobe SM-20 Sound Level Meter has been designed for audible sound level measurements. The A weighting is for general noise sound level and the C weighting is for measuring sound level of acoustic material control in various environments. The meter has internal memory for 14,000 records and PC computer download capabilities using Download Suite.



- Designed to meet the measurement requirements of Safety Engineers, Health, Industrial safety offices and quality control in various environments.
- A and C weightings for checking compliance with safety regulations as well as acoustic analysis
- Measuring ranges:
  - A Weighting 30~130dB,
  - C Weighting 35~130dB
- Frequency range: 31.5Hz~8KHz
- Display with 0.1 dB steps on a 4 digit LCD
- Slow (1 sec) and fast (125ms) response settings to check peak and average noise levels

- MAX/MIN recording
- Internal memory, 14,000 records
- Recording intervals from 1 second to 8 hours
- PC computer download capabilities
- Data Hold to freeze reading on digital display
- CE, designed to meet IEC651 Type2, ANSI S1.4 Type2
- Accessories supplied: Carrying case, windscreen and 9 V Battery



FEATURES:	SM-10	SM-20
<b>Microphone</b>	1/2" Electret condenser microphone	
<b>Standard Applied</b>	IEC 651 Type 2, ANSI 1.4 Type 2	
<b>Dynamic Range</b>	50 dB	
<b>Time Weighting</b>	FAST (125 mS), SLOW (1 sec)	
<b>Frequency Range</b>	31.5 Hz to 8 kHz	
<b>Measuring Level Range (Auto Range)</b>	A Weighting: 30 to 130 dB C Weighting: 35 to 130 dB	
<b>Data</b>	MIN/MAX	
<b>Internal Memory</b>	N/A	14,000 records
<b>Optional Accessories:</b> SM-CAL1 - Sound Meter Calibrator with output levels of 94 dB and 114 dB.		



## SM-70 Sound Meter

The SM-70 sound meter has been designed for simple noise surveys and sound level checks. Easy to use for measuring noise in factories, industrial complexes, fire alarms and other alarm systems, sound system installations. Use the sound level calibrator to calibrate microphones and the SM-70 sound meter

- Measuring level range from 35 dB to 130 dB
- A and C weightings for checking compliance with safety regulations as well as acoustic analysis
- Frequency range 31.5 Hz – 8 kHz
- Slow (1 sec) and fast (125ms) response settings to check peak and average noise levels



OPTIONAL ACCESSORIES	PART NUMBER
CAL-SM Sound level calibrator <ul style="list-style-type: none"> <li>■ Two fixed output levels of 94 dB and 114 dB</li> <li>■ Output frequency of 100 Hz</li> </ul>	CAL-SM



## SM-CAL1 Sound Meter Calibrator

The Amprobe SM-CAL1 is a sound meter calibrator with two output levels of 94 dB and 114 dB. The calibrator generates these fixed sound level signals for calibration of sound level meters. The unit ships with a 1/2" adaptor installed to accommodate sound meters and microphones with 1/2" diameter.

- Two output levels of 94 dB and 114 dB
- Output frequency of 1000Hz
- Fits 1/2" microphones
- Easy one handed operation
- Low battery indicator
- CE, Conforms to ANSI S1.40 – 1984 and IEC942 – 1988 Class 2
- Includes 1/2" adapter and battery



SM-10





VP-440



## Non-Contact VoltProbes®

Designed for safety and limited troubleshooting without the expense. Fits conveniently in a shirt pocket, tool belt, or pouch.

### VP-440 & VP-600SB Non-Contact VoltProbes®

- Detect AC Voltage (100 – 600 V)
- Use non-contact method of voltage testing
- Totally insulated, no exposed metal or conductive parts
- Find and pinpoint breaks in wires (VP-600SB)
- Check for AC Voltages without necessity of disconnecting the electrical system
- Test for AC Voltage cables, circuit breakers, wall sockets, junction boxes, fuses, etc.



VP-600SB

FEATURES	VP-440	VP-600SB
AC Voltage Detection	100 - 1000 V	100 - 600 V
Indicator	Lights	Lights, Beeps and Vibrates
Safety Rating	CAT III, 1000 V	CAT III, 600 V

### K-1 Non-Contact Volt & Current Probe

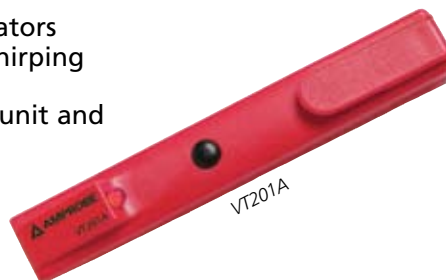
- Non-contact measurements of Amps and Volts
- AC Voltage Ranges 6-60 V & 60-600 V
- AC Amps Ranges: 0.6-6 A & 6-60 A
- Frequency response 60 Hz (50 Hz version - please order K-1-50)
- Voltage measurement is referenced to ground
- Accuracy +/- 15 % of full scale
- Easy to read bar graph display



K-1

### VT201A Non-Contact Voltage Detector

- Quickly check for the presence of AC voltages, with no electrical contact
- Safe non-contact detection of voltages from 70 V to 440 V AC
- Both visible and audible indicators
- Detector emits loud audible chirping
- Bright flashing LED
- On/Off button beep confirms unit and battery is working



VT201A

## High Voltage Non-Contact Testers

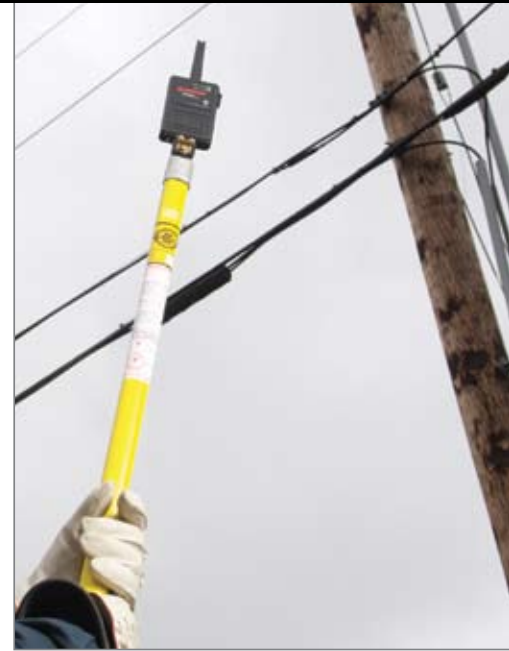
The TIC 300CC Voltage Detector ranges from 30 to 1500 V and also offers capacitance and continuity testing. The TIC 300HV works with a hot stick and measures up to 122 kv AC.

### TIC 300CC AC Voltage Detector

- Used to check fuses, breaker panels, power outlets, load break connectors, transmission lines, etc.
- Non contact AC voltage detector
- Audible ticking that increases in rate as the unit approaches the voltage source
- Indicates with beep and light
- 30-1500 VAC, non-contact
- MSHA approved

### TIC 300HV AC Voltage Detector

- Used to check fuses, breaker panels, power outlets, load break connectors, transmission lines, etc.
- Two voltage ranges, 1500 VAC and 122 kVAC, non-contact
- Works in low and high voltage ranges
- MSHA Approved



TIC 300HV with Hot Stick

FEATURES	TIC 300CC	TIC 300HV
AC Voltage	30 - 1500 VAC	30 - 1500 VAC 1500 - 122 kVAC
Capacitance	0-100 mF	N/A
Continuity	0-1 mΩ	N/A
Recommended Hot Stick	N/A	TIC 410A*

\* For use over 1500 VAC with TIC 300HV

OPTIONAL ACCESSORIES	PART NUMBER
Hot Stick - 53" up to 122 kV (TIC 300HV)	TIC 410A
Carrying Case (TIC 300CC and TIC 300HV)	CC-ACDC

### TIC 410A Hot Stick

- Telescoping feature to 53" long
- Up to 122 kV
- Tested to OSHA requirements





Remote Terminator

## Voltage & Continuity Testers

A user-friendly troubleshooting tester designed to meet most voltage and continuity applications.

### LAN-1 Lan Cable Continuity Tester

The Amprobe LAN-1 Cable Tester is designed for testing opens, shorts and miswired cable installations. It is designed to work with various data cables and connectors. This cable tester provides a quick go / no-go LED display of the wiring and connection of item under test. You can either step through the test cable wiring one at a time or have the unit automatically pulse through the pin-outs and display the results.

- Test pin configuration for: 10/100 base-T cable, 10 base-2 cable, RJ45 modular cables, AT&T 258A cable, EIA/TIA 568A/568B cables, Token Ring Cable
- Verify the cable wiring for continuity, opens, shorts or incorrect wiring
- Test installed cable on wall plate or the patch panels by using the Remote Termination module
- Perform Loopback Test or Remote Test
- Buzzer sound warning for error condition in cable
- Two sets of LED lights for Source and Test indication
- Maximum line length: > 300 meters



### VPC-10 & VPC-10N Voltage and Continuity Testers

- Extremely easy use, no buttons or setups
- Automatically turns ON and OFF
- Self-selects AC Voltage, DC Voltage or Continuity
- Polarity indication
- Indicates 7 levels of AC or DC Voltage
- Visual continuity indication (LED)
- Continuity buzzer
- Rubber holster with built-in probe storage



FEATURES	VPC-10	VPC-10N
AC Voltage	24 / 120 / 208 / 240 / 277 / 480 / 600	
DC Voltage	6 / 12 / 24 / 36 / 48 / 110 / 220	
Continuity	0-85 kΩ	
Non-contact voltage detection	N/A	Yes



## Continuity Testers

### PY-11 Continuity Tester

- Bulb lights when circuit is completed
- For use with unenergized circuits



## Specialty Probes

These two logic probes troubleshoot and analyze most digital logical circuits. The LP10B logic probe is used for most types of TTL and CMOS circuits. The LP25B logic probe tests more types of digital circuits. Both probes detect pulses of more than 30 ns.

The HV231-10A is a high voltage probe designed to extend the voltage measuring capability of an AC/DC voltmeter. The probe is to be used to make measurements on energy limited circuits within equipment. Examples include high voltage within televisions or photo copy machines.

### LP10B/LP25B

- Pen-size logic probes
- Troubleshoot and analyze digital logic circuits



LP10B: Evaluates most common circuits. Detects pulses >30 ns up to 20 mHz, TTL, CMOS levels and dual LEDs indicate hi/lo state.

LP25B: Increased frequency range. Detects Pulses >30 ns up to 20 mHz, TTL, CMOS, DTL, RTL, NMOS, MOS Logic, dual LEDs and tone indicate hi/lo state.

### HV231-10A

- High voltage probe
- Extended voltage measuring to 40 kV
- Use with standard multimeters with 10 mΩ input impedance



## Socket Testers

Use these socket testers to verify the correct wiring of your AC socket. The GFCI version applies a load to confirm the GFCI breaker is working. The high voltage and continuity testers both use lights to quickly indicate voltage or continuity.

### ST101A Socket Tester

- Fast and easy socket test
- Easy-to-read light indicators
- Confirm proper wiring and operation of AC socket
- For use on 110 V to 125 V AC
- Not available in all countries



### ST102A GFCI Socket Tester

- Test 110 V to 125 V AC GFCI breakers for proper wiring and operation
- GFCI circuit trips to confirm tester is working
- Easy to read light indicators
- Not available in all countries.



### PY-1 AC/DC Voltage Tester

- Automatically indicates voltage of circuit under test
- AC Volts 115/220/277/400
- DC Volts 125/300/400/600
- Four neon bulb indicator lamps





## Phase Sequence

Phase sequence testing is crucial for some three-phase loads. Improper connection of three-phase motors may lead to reverse rotation, and as a result it may damage equipment powered by a motor. Amprobe's Phase Sequence and Motor Rotation Tester is used to assure used to assure proper and safe connection of the electrical equipment on three-phase systems.

### PRM-4 Phase Sequence & Motor Rotation Tester

- Identify proper sequencing of live 3-phase line voltages
- Check for open phase status
- Determine 3-phase motor rotation direction
- Bright LED illuminators to clearly indicate test results
- Includes 3 color coded test leads with large alligator clips & carrying case
- CAT III 600 V rated for all test features



## Handheld Component Testers

### CR50A Capacitor and Resistor Tester

- Measures capacitance and resistance
- Dual zero adjustment pots to null strays and test leads
- Wide measurement ranges
- Special "Low Ohms" range
- Ships with protective holster, test leads and threaded alligator clips



### LCR55A Inductance, Capacitor and Resistor Tester

- Measures inductance, capacitance, resistance, transistors, diodes and microwave diodes
- Dedicated tester offers wider measurement ranges with more accuracy
- Data hold, max hold
- Auto Power Off
- Ships with protective holster, test leads and threaded alligator clips



PRM-4



FEATURES	CR50A	LCR55A
Resistance	0.01 $\Omega$ - 20 m $\Omega$ , $\pm 1.0$ %	0.01 $\Omega$ - 20 m $\Omega$ , $\pm 0.5$ %
Capacitance	0.1 pF - 20,000 $\mu$ F, $\pm 0.5$ %	0.1 pF-2000 $\mu$ F, $\pm 1.0$ %
Inductance	N/A	0.1 $\mu$ H-200 H, $\pm 5.0$ %
Transistors	N/A	Hfe, I <sub>ceo</sub> (NPN, PNP)
Diodes	Yes	Std (3 V) & microwave oven (8 V)
Continuity test	Yes	Yes

## Remcon Relays

### R-115S Momentary switch type relay (3 wire)

### RC-120S Closet-light type relay (2 wire)

- Switches AC power ON and OFF using low voltage control circuit
- Single relay can be controlled by multiple switches and multiple relays can be controlled by single switch
- Light #22 gauge cable can be used to control relay instead of Romex or armored cable – significant time & cost savings
- Built in transformer, no step down transformers necessary
- AC Voltage from 105 to 125 V
- AC Current up to 6.5 A (1/4 HP max motor load at 120 V)
- Frequency: 60 Hz
- Safe control switching: 10 V DC max and 10 milliamps max.



## Remcon Solid State Low Voltage Switching

Each Remcon relay, unlike any other low voltage relay, has a built-in transformer for unit control. Each relay in the system operates independently from and has no effect upon other relays. You can economically install as little as one relay and operate it with as many switches as is desired.

- Only 10 volts on switch control lines. That means no Romex or armored cable\* to pull; just light, pliable #22 wire. Just think of the time you can save.
- Simpler wiring. No need to wire back to a separate low voltage transformer. You simply connect the three\*\* low voltage wires to the three\*\* switch terminals.
- Silent operation. Low relay noise level permits installation of relay right at the fixture. No need to mount in a remote location.

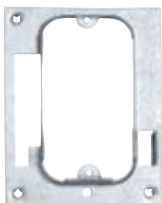
Relay cannot burn out if low voltage switch legs are shorted

\* Where code permits

\*\* Only two wires for closet light relay

## Applications

- Industrial Control Applications
- Where isolated low voltage is needed for safety reasons
- Higher current applications (up to 6.5 amps, 1/2 HP)
- Long distance remote operations
- Hostile or hazardous environments
- Alarms
- Plant process controls
- Computer control applications
- Reduce control wiring costs and electrical interference
- Economically meet building codes in new installations
- Applications where UL listed device is required.



MB-1



SPR-1



SPR-2



SPR-3

## Current Transducers



### A400 400 A Clamp-On Transducer

- For use with multimeters, oscilloscopes, power recorders or any instrument with AC milli-volt input (1 mVAC per Amp)
- AC Current measurement from 0.1 A to 400 A
- Measures 50 or 60 Hz current
- Maximum jaw opening 1.18"



### CT-600 AC/DC 600 A AC/DC Clamp-On Transducer

- For use with multimeters, oscilloscopes, power recorders or any instrument with AC & DC milli-volt input (1 mVAC per Amp)
- AC or DC Current measurement up to 600 A
- Two ranges 100 A and 600 A (millivolt output respectfully 10 mV and 1 mV per Amp)
- Wide frequency response 40-400 Hz
- Maximum jaw opening 1.33"



### ACF-3000AK 3000 A Flexible Current Transducer

- For use with multimeters or any instrument with AC milli-volt input
- Measures up to 3000 Amps AC
- Connects directly to an instrument
- Flexible head fits all, small conductors and large bus-bars up to 7" in diameter
- Wide frequency bandwidth (10 Hz to 20 kHz)



### ACF-3000DM-A Current Transducer

- Extends current range to 3000 A
- Flexible head fits all, small conductors and large bus-bars up to 7" in diameter
- Supplied with adapters for the DM-II PRO and DM-II PLUS units
- Two measurement ranges: 30 A - 300 A AND 300 A - 3000 A
- Recommended one ACF-3000DM-A for single phase system and three for three phase systems



### CT235A

- AC/DC current clamp, 1000 A (50/10 kHz), mV output, 1.2" max conductor

### CT237A

- AC/DC current clamp, 200 A (50/10 kHz), mV output, .75" max conductor

### CT238A

- AC/DC current clamp, 20 A (50/20 kHz)
- Low current version



## Line Splitter

### ELS2A, AC Line Splitter

- Measures load current without splitting line cord
- Two measurement points, X1 and X10 for increased sensitivity
- Built-in voltage measurement jacks
- 115 V, 15 A



## Temperature Adapters

### DKTA-620, Single to dual temperature adapter

- Accessory for multimeters and clamp-ons with temperature input
- Converts single temperature input to a dual temperature
- Computes differential temperature between probes



### TC253B temperature adapter

- Add thermometer function to any DMM
- °C / °F switchable
- Uses Type K thermocouple sensor
- Includes Type K probe (TP255A)
- Range: -50 °C to 1000 °C (-58 °F to 1832 °F)
- output 1 mV / °C



## Temperature Probes

### MH101KA, Thermocouple

- Master probe handle for probes
- 5:1 expandable coiled extension wire



### TP110KA, Type K Temperature Probe

- Immersion probe tip
- Can be used with MH101KA
- 650 °C (1200 °F)



### TP120KA, Type K Temperature Probe

- Surface probe tip
- 650 °C (1200 °F)
- Can be used with MH101KA
- Specially designed to get true surface temperatures



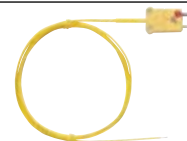
### TP130KA, Type K Temperature Probe

- Air/gas probe tip
- 650 °C (1200 °F)
- Can be used with MH101KA
- Specially designed with radiation sheath



### TP255A, General purpose Type K probe

- 200 °C (392 °F)



### TP254A, Higher-temperature immersion probe

- 1100 °C (2012 °F)



### TPK-59, Thermocouple

- Accessory for multimeters and clamp-ons with temperature input
- Measures temperature from -50 °F to 600 °F
- Plugs directly to a meter without additional adapters



## Test Leads



### DL243D

48" long silicone lead wires, probe tips, alligator clips, spade lugs, fold-out carrying case



### DL248D

Same as DL243D plus spring loaded crimp tips and Red tip length extender



### MTL-90B

Silicone test leads with alligator clips



### MTL-500

Test lead kit contains: Double insulated Silicon Test Leads, Sharp Test Probes and Fully Insulated Alligator Clips



### MTL-501

Test lead kit: Double Insulated Silicone Test Leads, Sharp Test Probes Fully Insulated Alligator Clips, USA Main Socket Test Adapters & Spring Hook Tips



### TL244B

Heavy duty silicone leads: 48" heavy duty test lead wire with Ever-sharp probe tips plus threaded alligator clips Shrouded 90° banana plugs



## Test Leads

### TL245A

PVC insulated standard test leads



### TL246C

Heavy Duty Silicone Test leads with attached extra-large alligator clips



### TL35B

Standard leads: 40" PVC insulated lead with standard tips  
plus threaded large alligator clips  
CE approved alligator clips, 0.6" jaw  
Shrouded 90° banana plugs  
One red and one black leads and clips



### TL36A

Test leads with threaded alligator clips  
CATIV/600 V, CAT III/100 V



### TL1500

Heavy Duty test leads  
CATIV/1000 V, 1500V MAX



### TL-AU92

40" PVC insulated lead wires with probe tips threaded to accept the detachable alligator clips, 0.6" jaw  
Shrouded 90° banana plugs. One red and one black leads and clips and test lead extender tips (1-1/2" x .04" dia).



## Carrying Cases

	<b>CC-ACDC</b> Soft pouch zippered Carrying Case 292 x 114 x 70 mm (11.5 x 4.5 x 2.8")
	<b>CC-DM-III</b> Deluxe Heavy Duty Carrying Case 465 x 381 x 184 mm (18.3 x 15.0 x 7.3")
	<b>DC205C</b> Deluxe Heavy Duty Carrying Case 244 x 119 x 109mm (9.6 x 4.7 4.3")
	<b>DC207C</b> Deluxe Heavy Duty Carrying Case with compartment for current transformer and extra accessories 246 x 198 x 119 mm (9.7 x 7.8 x 4.7")
	<b>SV-U</b> Soft pouch zippered Carrying Case 216 x 76 x 64 mm (8.5 x 3.0 x 2.5")
	<b>VC221B</b> Padded vinyl Carrying Case 216 x 114 x 64 mm (8.5 x 4.5 x 2.5")
	<b>VC3A</b> Rugged zippered Carrying Case 114 x 56 x 10mm (4.5 x 2.2 x .4")
	<b>VC30A</b> Vinyl Carrying Case 191 x 86 x 38 mm (7.5 x 3.4 x 1.5")



## Carrying Cases Chart

MODEL	CC-ACDC	DC250C	DC207C	GP-2CC	SV-U	VC11	VC221B	VC3A	VC30A
5XP-A									•
15XP-A									•
35XP-A									•
30XR-A		•	•				•		
33XR-A		•	•				•		
34XR-A		•	•				•		
37XR-A		•	•				•		
38XR-A		•	•				•		
ACD-6 PRO					•				
ACD-6 PRO-TRMS					•				
ACD-10 PLUS					•				
ACD-10 TRMS-PLUS					•				
ACD-14 FX					•				
ACD-14 TRMS-FX					•				
ACD-15 PRO					•				
ACD-15 TRMS-PRO					•				
ACD-16 PRO					•				
ACD-16 TRMS-PRO					•				
ACD-31P					•				
ACD-41PQ					•				
ACD-56HPQ					•				
ACDC-100					•				
ACDC-100 TRMS					•				
ACDC-620T	•								
ACDC-3000	•								
AM-140 TRMS	•								
AM-150 TRMS	•								
AM-160 TRMS	•								
AM-220									•
AM-240									•
AM8C						•			
AMB-45				•					
CR50A									•
DGC-1000A	•								
DM7C									•
DM9C									•
DM73C						•			
HD110C		•	•				•		
HD160C		•	•				•		
LCR55A							•		
TIC 300CC	•								
TIC 300HV	•								
PM51A								•	
PM53A								•	
PM55A								•	

## Software and Cables

Transfer measurement data to your computer with these kits.

### Download Suite Software

Download Suite is a unique software package compatible with most of the Amprobe instruments with download capabilities. Enjoy the benefits of this powerful software package as it supports Amprobe Megohmmeters, Ground Resistance Testers, MultiTesters, and Power Quality Recorders. Download Suite is the only software package needed for all Amprobe Products that have download capabilities.

- Install software once and use it with various Amprobe products
- Download Suite features one installation and download package for all supported Amprobe Products
- One file format - all instruments share the same file format.

- You can open files recorded by you, other people, or even other Amprobe instruments right on your PC
- Download Suite automatically checks your version for upgrades and keeps your version current.



### RS-232 KIT1

- Multimeter download software with connection cable for multimeters

### RS-232 KIT2

- Clamp-on download software with connection cable for clamp-on multimeters



RS-232 KIT2

### RS-USB, USB to RS-232 Adapter

- Converts the USB port of a personal computer to the RS-232
- Supports Windows 95(OSR2X), 98, 2000, ME, XP, Mac 8.6 and higher
- Works with Amprobe instruments with download capabilities
- Works with many other products with USB ports, including cameras, palm pilot, card readers, mouse, security systems, etc.
- Will free up the serial port for other uses



RS-USB

### TM-SWA, RS232 Cable and Software

- Allows for real-time data downloads from TMA10A and TMD90A
- Records two channels simultaneously



RS-232 CABLE & SOFTWARE

## Amprobe Software Chart

MODEL	Download Suite 2.3	38SW-A	3P4W Power Analyzer	ADC 16/40	ADC 30/31/41	AM 120/130 /150	AM 140/160	AMB-45	DMM8x	SuperLink	TM-SW	TopLink
38XR-A		•										
ACD-16 PRO/TRMS PRO	•			•								
ACD-31P	•				•							
ACD-41 PQ	•				•							
ALLTEST-US	•									•		
AM-140 TRMS	•						•					
AM-150 TRMS	•					•						
AM-160 TRMS	•						•					
AMB-45	•							•				
AMB-5KVD	•									•		
AMB-6D	•									•		
DM-4	•											
DM-II PLUS	•											
GP-2	•									•		
MAN02	•											
PQ55A			•									
SM-20	•											
TMA10A	•										•	
TMD40	•											
TMD90A	•										•	
TR100	•											
TR200	•											
TR300	•											

## Product Fuse Directory

MODEL	FUSE PART NUMBER	FUSE TYPE
15XP-A	FP200	F 2A/1000V
30XR-A	FP160 ; FP375	F 10A/600V ; F.25A/700V
33XR-A	FP100 ; FP300	F 10A/1000V ; F0.315A/1000V
34XR-A	FP100 ; FP300	F 10A/1000V ; F0.315A/1000V
35XP-A	FP200	F 2A/1000V
37XR-A	FP100 ; FP500	F 10A/1000V ; F 0.5A/1000V
38XR-A	FP100 ; FP500	F 10A/1000V ; F 0.5A/1000V
5XP-A	FP300	F 0.315A/1000V
AM8C	FP150	F 200mA/250V
AU92	FP520 ; FP540	F 0.5A/500V ; F 10A/500V
CR50 / LCR55	FP125	F 0.1A /250V
DM7C	FP450	F 0.2A/600V
DM9C	FP175 ; FP275	F 0.5A/600V ; F 10A/600V
PRM-4	FP900	F .2A/700V
HD110C	FP700	F 2A/1500VDC
HD160C	FP700	F 2A/1500VDC
ISO PLUS	FP650	TD 630mA/500V
ISO TEL	FP650	TD 630mA/500V
AM-140	FA-6X32/.63 ; FA-12.5A/500V	F 0.63A / 500V ; F 12.5A / 500V
AM-150	FP410 ; FP412	F 11A / 1000V ; F 0.44A / 1000V
AM-160	FP410 ; FP412	F 11A / 1000V ; F 0.44A / 1000V
AM-220,240	FP222; FP221	F 10A / 250V ; F 0.5A / 250V
AMB-45	FA-0.5A/700V	F 0.5A / 700V
DM II Pro	3AG-312.250	F 0.25A / 250V
S2300(AT-200X)	380.25-6X32	F 0.25A / 380V
S2600(AT-200X)	660.25-6X32	F 0.25A / 660V
T-100,T-300(CT-100, 326B)	3AG-312.250	F 0.25A / 250V
T2200(AT-200X)	2502-6X32	F 2A / 250V
T-4000(AT-400X)	FA6X46MM	F 0.25A / 1000V
X1000 (AT1000)	380.25-6X32	F 0.25A / 380V





**www.Amprobe.com**

Our web site contains full data sheets with specifications, application notes, software downloads, special promotions and much more.



Visit our website at  
**www.Amprobe.com**

- View complete detailed product specifications
- Download data sheets
- Review or download user manuals
- Read our application articles
- Review available accessories
- Identify replacement fuses
- Download the latest software for your Amprobe recording tool
- Request a catalog for your friend!

## Safety Reference Guide

### International safety standards

Test equipment must be designed to protect people who work in the high-voltage, high-current environment. In order to prevent injury the International Electrotechnical Commission (IEC) develops international general standards for safety of electrical equipment for measurement, control and laboratory use. The most current standard 61010 specifies overvoltage categories for electrical distribution systems. The Category rating increases based on the closeness to the power source and a higher level of user protection is required from test equipment.

### Proposed Energy Regions\*

#### CAT I

Electronics, signal level single-phase receptacle loads

#### CAT II

Appliances, portable tools

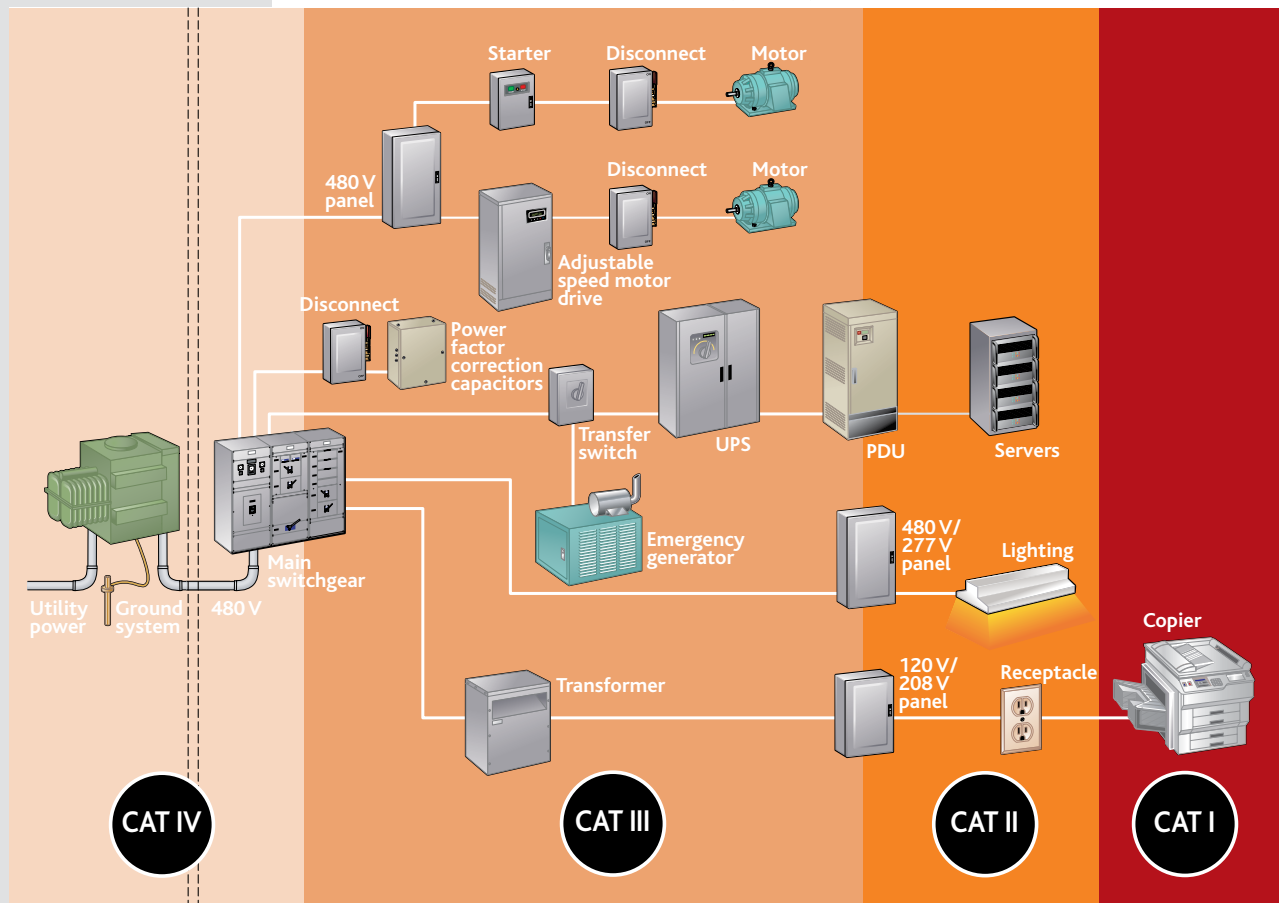
#### CAT III

Three-phase distribution, large building lighting systems, distribution panel devices

#### CAT IV

Three-phase at utility connection, electricity meters, outside and service entrance

*\* Category ratings per IEC1010-1. Category boundaries may not be exact.*



## Index

#						
15XP-A.....	14	AMB-45.....	26	<b>I</b>	TMA10A.....	34
30XR-A.....	13	AMB-5KV.....	27	IR608A.....	TMA40.....	34
33XR-A.....	13	AMB-5KV-D.....	27	ISO-PRO.....	TMD10.....	35
34XR-A.....	12	AMC-2.....	28	<b>K</b>	TMD90A.....	34
35XP-A.....	14	AMC-3.....	28	K-1.....	TMULD-300.....	37
37XR-A.....	12	AMC-4.....	28	<b>L</b>	TPP1-C1.....	35
38XR-A.....	12	AT-1000.....	22	LAN-1.....	TPP1-F1.....	35
5XP-A.....	14	AT-2002.....	24	LCR55A.....	TPP2-C1.....	35
<b>A</b>		AT-2004.....	24	LH41A.....	TPP2-F1.....	35
AC40B.....	03	AT-2005.....	24	LM631A.....	TR100.....	38
AC50A.....	07	AT-3000 PRO.....	23	LM-100.....	TR200.....	38
AC68C.....	06	AT-4001 CON.....	25	LM-120.....	TR300.....	38
AC71B.....	06	AT-4003 CON.....	25	LP10B.....	<b>U</b>	
AC75B.....	06	AT-4004 CON.....	25	LP25B.....	UDM-45.....	39
ACCESSORIES.....	50-59	AT-4005 CON.....	25	<b>M</b>	ULD-300.....	37
ACD-10 PLUS.....	02	ATGC1.....	24	MAN-02.....	<b>V</b>	
ACD-10 TRMS-PLUS.....	02	AU92.....	15	<b>P</b>	VP-440.....	44
ACD-14 PLUS.....	02	<b>B</b>		PM51A.....	VP-600SB.....	44
ACD-14 TRMS-PLUS.....	02	BT-250.....	22	PM53A.....	VPC-10.....	46
ACD-15 PRO.....	05	<b>C</b>		PM55A.....	VPC-10N.....	46
ACD-15 TRMS-PRO.....	05	CR50A.....	48	PRM-4.....	VT201A.....	44
ACD-16 PRO.....	07	CM-100.....	39	PY-1.....		
ACD-16 TRMS-PRO.....	07	CT-100.....	23	PY-11.....		
ACD-31P.....	09	CT-326B.....	23	<b>R</b>		
ACD-330T.....	08	<b>D</b>		R-1155.....		
ACD-41PQ.....	09	DGC-1000A.....	29	RC-120S.....		
ACD-56 HPQ.....	09	DM-4.....	32	<b>S</b>		
ACD-6 PRO.....	04	DM73C.....	15	SM-10.....		
ACD-6 TRMS-PRO.....	04	DM7C.....	17	SM-20.....		
ACDC-100.....	05	DM78C.....	17	SM-70.....		
ACDC-100 TRMS.....	05	DM9C.....	17	SM-CAL-1.....		
ACDC-3000.....	08	DM-II PLUS.....	33	ST101A.....		
ACDC-400.....	03	DM-III Multitest.....	30	ST102A.....		
ACDC-620T.....	08	DM-III Multitest F.....	30	<b>T</b>		
AD105A.....	04	<b>E</b>		TACH-20.....		
AD40B.....	03	EARTH-TEST.....	29	TH-1.....		
ALLTEST-US.....	27	ECB50A.....	22	TH-3.....		
AM-140 TRMS.....	18	<b>G</b>		THWD-3.....		
AM-150 TRMS.....	18	GP-2.....	29	THWD-5.....		
AM-160 TRMS.....	18	GSD-600.....	39	TIC 300CC.....		
AM-220.....	15	<b>H</b>		TIC 300HV.....		
AM-240.....	15	HD110C.....	19	TIC 410A.....		
AM8C.....	17	HD160C.....	19	TM45A.....		
AMB-2.....	28	HV231-10A.....	47			
AMB-25.....	26					
AMB-3.....	28					

No hassle warranty

No waiting.

No shipping charges.

WARRANTY

NO HASSLE

PROGRAM

Our commitment to high-quality products and customer service is demonstrated by our industry exclusive “No Hassle” warranty. In the unlikely event that an Amprobe Test Tool requires warranty service, any of our local dealers are authorized to

### No hassle warranty

*No waiting.*

*No shipping charges.*



Our commitment to high-quality products and customer service is demonstrated by our industry exclusive "No Hassle" warranty. In the unlikely event that an Amprobe Test Tool requires warranty service, any of our local dealers are authorized to replace it, on the spot. (note: \$500 MSLP limit)



**www.Amprobe.com**

Our web site contains full data sheets with specifications, application notes, software downloads, special promotions and much more.

Amprobe® Test Tools offers a wide range of devices for testing and measuring electrical properties in various field applications. Primary products include Clamp-ons, Multimeters, Wire Tracers, Megohmmeters, Environmental and Voltage & Continuity testers.



**Amprobe® Test Tools**

www.Amprobe.com  
info@amprobe.com  
Everett, WA 98203  
tel: 877-AMPROBE (267-7623)

**Amprobe® Test Tools Europe**

Beha-Amprobe GmbH  
www.Amprobe.de  
info@amprobe.de  
In den Engematten 14  
79286 Glottertal, Germany  
tel: +49 (0) 7684 8009 - 0

*Specifications subject to change without notice.*

©2008 Amprobe Test Tools.  
All rights reserved. Printed in the U.S.A.  
09/08 2765603 NP-EN Rev E