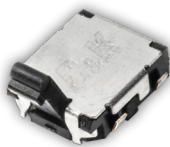


FDSE Series Micro Mini Angled Actuated Detect Switches

NEW



Features/Benefits

- *Extremely small package size*
- *Angled Actuation*
- *Flat or Bending Terminations*
- *Long Travel Type*
- *RoHS Compliant*

Typical Applications

- *Consumer electronics*
- *Medical devices*
- *Safety control devices*

Specifications

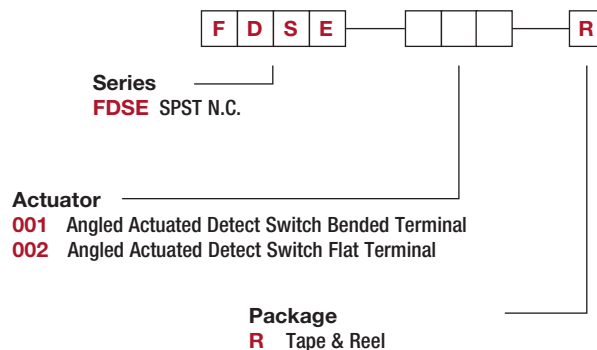
CONTACT RATING: 100 μ A @ 3VDC, 1 mA @ 5 VDC
MECHANICAL & ELECTRICAL LIFE: 50,000 operations
CONTACT RESISTANCE: 3 Ω max
INSULATION RESISTANCE: 100M Ω min 100 VDC
DIELECTRIC STRENGTH: 100VAC @ 1 minute
OPERATING TEMPERATURE: -10°C to +60°C
OPERATING FORCE: 35 gf max.
TRAVEL: 3.14 mm or 60°
SOLDERABILITY: According to lead free solder profiles
PACKAGING: 3,500 pieces per reel.

Materials

BASE: PA9T
COVER: C7701R
ACTUATOR: PA 46
MOVABLE CONTACT: Beryllium Copper
TERMINALS: Phosphor Bronze, Ag over Ni Plating

Build-A-Switch

Complete part numbers for FDSE Series are shown below.

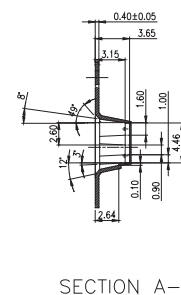
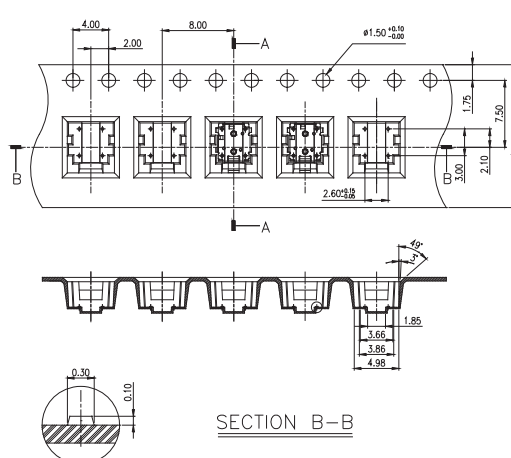


E

Detect

FDSE Series Micro Mini Angled Actuated Detect Switches

FDSE001R



SECTION A-A

10 oct 18

E-29

Dimensions are shown: mm
Specifications and dimensions subject to change

www.ckswitches.com

Detect