

Number of contacts

8

+ 2x GND



Features

- Miniaturised Ethernet data interface suitable for industry in acc. to IEC 61076-3-124 type A
- Robust industrial design
- 360° shielding
- Category of transmission Cat. 6_A
- 5000 mating cycles
- 70 % reduced size compared to RJ45
- Suitable for all PoE versions

Technical characteristics

Number of contacts	8
Additional contacts	+ 2x GND
Rated current	1.5 A
Rated voltage	50 V AC, 60 V DC
Test voltage U _{r.m.s.}	0.5 kV
Contact resistance	≤30 mΩ
Shielding resistance	≤100 mΩ
Limiting temperature	-40 ... +85 °C
Storage temperature	-30 ... +60 °C
Mating cycles	≥5000
Degree of protection acc. to IEC 60529	IP20
Transmission characteristics	Cat. 6 _A , Class E _A up to 500 MHz
Data rate	10 Mbit/s, 100 Mbit/s, 1 Gbit/s, 2.5 Gbit/s, 5 Gbit/s, 10 Gbit/s
Insertion force	≤25 N
Withdrawal force	≤25 N
Material (insert)	LCP
Colour (insert)	Black
Material (contacts)	Copper alloy
Flammability acc. to UL 94	V-0
RoHS	compliant

Specifications and approvals

IEC 61076-3-124



Details

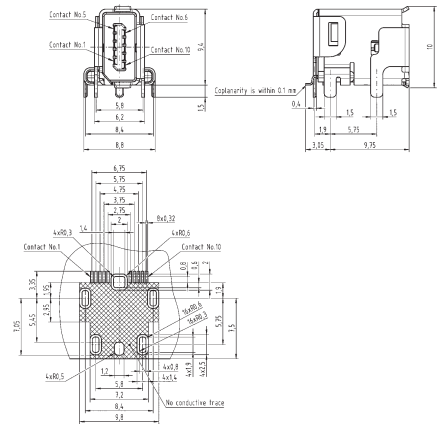
Cable assemblies see chapter 8

Identification

HARTING ix Industrial®,
PCB connector,
Angled,
Solder termination,
Fully shielded, 360° shielding contact,
Pack contents:
1 sample piece
Contact surface:
Au over Ni

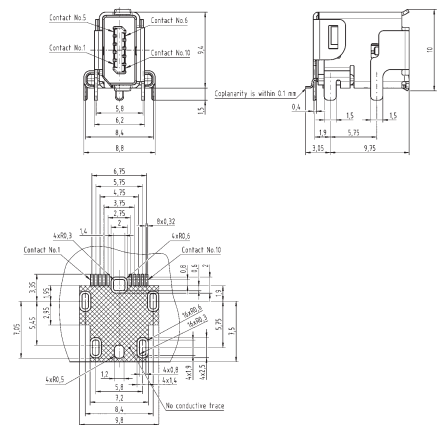
Part number

09 45 281 2560 333

Drawing
(dimensions in mm)

HARTING ix Industrial®,
PCB connector,
Angled,
Solder termination,
Fully shielded, 360° shielding contact,
Pack contents:
400 pieces on reel
Contact surface:
Au over Ni

09 45 281 2560

Inter-
face

Number of contacts

8

+ 2x GND



Features

- Miniaturised Ethernet data interface suitable for industry in acc. to IEC 61076-3-124 type A
- Robust industrial design
- 360° shielding
- Category of transmission Cat. 6_A
- 5000 mating cycles
- Suitable for all PoE versions

Technical characteristics

Number of contacts	8
Additional contacts	+ 2x GND
Rated current	1.5 A
Rated voltage	50 V AC, 60 V DC
Test voltage U _{r.m.s.}	0.5 kV
Contact resistance	≤30 mΩ
Shielding resistance	≤100 mΩ
Limiting temperature	-40 ... +85 °C
Storage temperature	-30 ... +60 °C
Mating cycles	≥5000
Degree of protection acc. to IEC 60529	IP20
Cable diameter	6.3 ... 7.2 mm
Transmission characteristics	Cat. 6 _A , Class E _A up to 500 MHz
Data rate	10 Mbit/s, 100 Mbit/s, 1 Gbit/s, 2.5 Gbit/s, 5 Gbit/s, 10 Gbit/s
Insertion force	≤25 N
Withdrawal force	≤25 N
Material (insert)	LCP
Colour (insert)	Black
Material (contacts)	Copper alloy
Flammability acc. to UL 94	V-0

Specifications and approvals

IEC 61076-3-124



Details

Cable assemblies see chapter 8

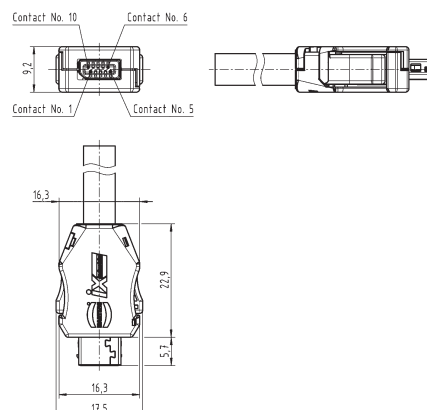
Identification

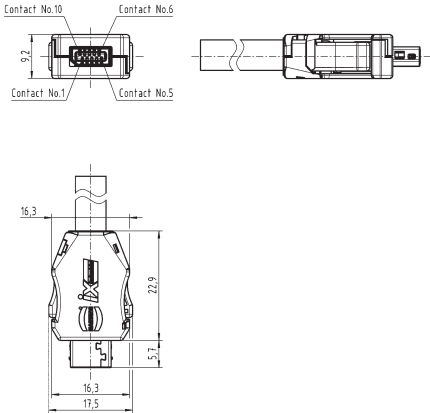

HARTING ix Industrial®,
Cable connector,
Solder termination,
Fully shielded, 360° shielding contact,
for AWG 28/7 - 22/7 and conductor diameters up to 1.55 mm,
Pack contents:
Packaging with 100 pieces
Contact surface:
Au over Ni

Part number

09 45 181 2560 XL

Drawing (dimensions in mm)



Identification	Part number	Drawing (dimensions in mm)
<p>HARTING ix Industrial®, Cable connector, IDC termination, Fully shielded, 360° shielding contact, for AWG 28/7 - 26/7 and conductor diameters from 0.95 - 1.05 mm, Pack contents: Packaging with 100 pieces Contact surface: Au over Ni</p>	09 45 181 2561 XL	
<p>Assembly tool, for HARTING ix Industrial® to assemble the single wire to the IDC and the cable strain relief crimping</p>	09 45 800 0181	

Inter-
face

Number of contacts

10



Features

- Miniaturised interface for signals and bus systems in acc. to IEC 61076-3-124 type B, suitable for industrial use
- Robust industrial design
- 360° shielding
- 5000 mating cycles
- Very small and space saving interface

Technical characteristics

Number of contacts	10
Rated current	1.5 A
Rated voltage	50 V AC, 60 V DC
Test voltage U _{r.m.s.}	0.5 kV
Contact resistance	≤30 mΩ
Shielding resistance	≤100 mΩ
Limiting temperature	-40 ... +85 °C
Storage temperature	-30 ... +60 °C
Mating cycles	≥5000
Degree of protection acc. to IEC 60529	IP20
Insertion force	≤25 N
Withdrawal force	≤25 N
Material (insert)	LCP
Colour (insert)	Black
Material (contacts)	Copper alloy
Flammability acc. to UL 94	V-0

Specifications and approvals

IEC 61076-3-124



Details

Cable assemblies see chapter 8

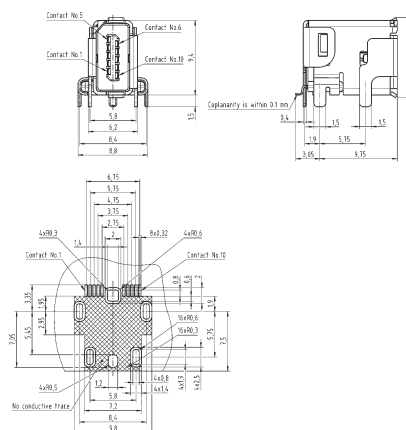
Identification

HARTING ix Industrial®,
PCB connector,
Solder termination,
Fully shielded, 360° shielding contact,
Pack contents:
1 sample piece
Contact surface:
Au over Ni

Part number

09 45 281 9000 333

Drawing (dimensions in mm)



Interface

Number of contacts

10



Features

- Miniaturised interface for signals and bus systems in acc. to IEC 61076-3-124 type B, suitable for industrial use
- Robust industrial design
- 360° shielding
- 5000 mating cycles
- Very small and space saving interface

Technical characteristics

Number of contacts	10
Rated current	1.5 A
Rated voltage	50 V AC, 60 V DC
Test voltage U _{r.m.s.}	0.5 kV
Contact resistance	≤30 mΩ
Shielding resistance	≤100 mΩ
Limiting temperature	-40 ... +85 °C
Storage temperature	-30 ... +60 °C
Mating cycles	≥5000
Degree of protection acc. to IEC 60529	IP20
Cable diameter	6.3 ... 7.2 mm
Insertion force	≤25 N
Withdrawal force	≤25 N
Material (insert)	LCP
Colour (insert)	Black
Material (contacts)	Copper alloy
Flammability acc. to UL 94	V-0

Specifications and approvals



Details

Cable assemblies see chapter 8

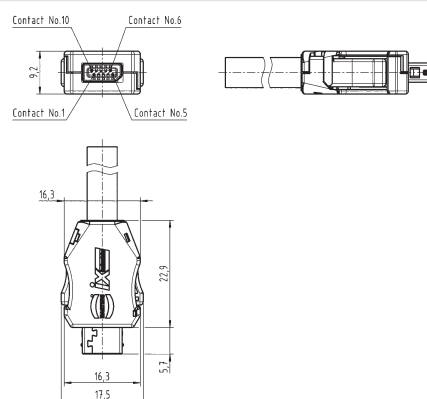
Identification

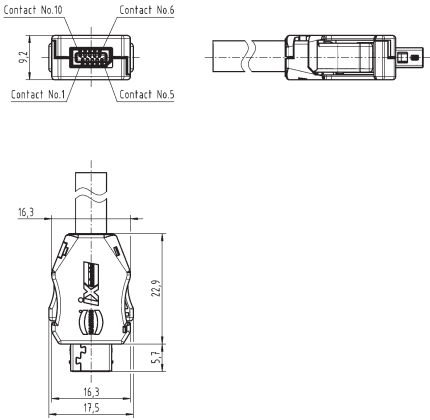

HARTING ix Industrial®,
Cable connector,
Solder termination,
Fully shielded, 360° shielding contact,
for AWG 28/7 - 22/7 and conductor diameters up to 1.55 mm,
Pack contents:
Packaging with 100 pieces
Contact surface:
Au over Ni

Part number

09 45 181 9000 XL

Drawing (dimensions in mm)

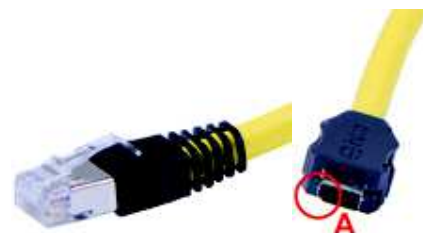


Identification	Part number	Drawing (dimensions in mm)
<p>HARTING ix Industrial®, Cable connector, IDC termination, Fully shielded, 360° shielding contact, for AWG 28/7 - 26/7 and conductor diameters from 0.95 - 1.05 mm, Pack contents: Packaging with 100 pieces Contact surface: Au over Ni</p>	09 45 181 9001 XL	
<p>Assembly tool, for HARTING ix Industrial® to assemble the single wire to the IDC and the cable strain relief crimping</p>	09 45 800 0181	

Inter-
face

4x 2x AWG 28/7
HARTING ix Industrial® Type A
RJ45

Cable



Features

- Miniaturised Ethernet data interface suitable for industry in acc. to IEC 61076-3-124 type A
- Robust industrial design
- 360° shielding
- Category of transmission Cat. 6_A
- 5000 mating cycles
- Flexible, space saving
- Suitable for all PoE versions

Technical characteristics

Number of cores	8
Core structure	4x 2x AWG 28/7
Connector 1	HARTING ix Industrial®, Type A
Connector 2	RJ45
Limiting temperature	-40 ... +80 °C
Transmission characteristics	Cat. 6 _A , Class E _A up to 500 MHz
Data rate	10 Mbit/s, 100 Mbit/s, 1 Gbit/s, 2.5 Gbit/s, 5 Gbit/s, 10 Gbit/s
Material (cable)	PVC
Colour (cable)	Yellow
RoHS	compliant


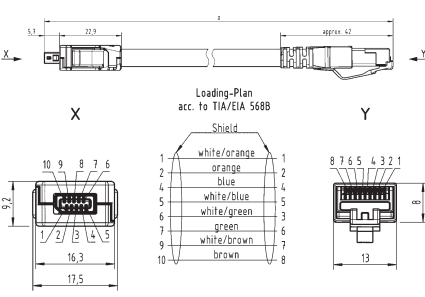
Specifications and approvals

IEC 61076-3-124



Details

Other cable lengths on request!

Identification	Cable length	Part number	Drawing (dimensions in mm)
HARTING ix Industrial® RJ45, Copper cable (round), Pre-assembled on both sides 	0.2 m	09 48 261 2749 002	
	0.3 m	09 48 261 2749 003	
	0.4 m	09 48 261 2749 004	
	0.5 m	09 48 261 2749 005	
	0.7 m	09 48 261 2749 007	
	1 m	09 48 261 2749 010	
	1.5 m	09 48 261 2749 015	
	2 m	09 48 261 2749 020	
	2.5 m	09 48 261 2749 025	
	3 m	09 48 261 2749 030	
	5 m	09 48 261 2749 050	
	7.5 m	09 48 261 2749 075	
	10 m	09 48 261 2749 100	

4x 2x AWG 28/7
HARTING ix Industrial® Type A
HARTING ix Industrial® Type A



Cable

Features

- Miniaturised Ethernet data interface suitable for industry in acc. to IEC 61076-3-124 type A
- Robust industrial design
- 360° shielding
- Category of transmission Cat. 6_A
- 5000 mating cycles
- Flexible, space saving
- Suitable for all PoE versions

Technical characteristics

Number of cores	8
Core structure	4x 2x AWG 28/7
Connector 1	HARTING ix Industrial®, Type A
Connector 2	HARTING ix Industrial®, Type A
Limiting temperature	-40 ... +80 °C
Transmission characteristics	Cat. 6 _A , Class E _A up to 500 MHz
Data rate	10 Mbit/s, 100 Mbit/s, 1 Gbit/s, 2.5 Gbit/s, 5 Gbit/s, 10 Gbit/s
Material (cable)	PVC
Colour (cable)	Yellow
RoHS	compliant

Specifications and approvals

IEC 61076-3-124



Details

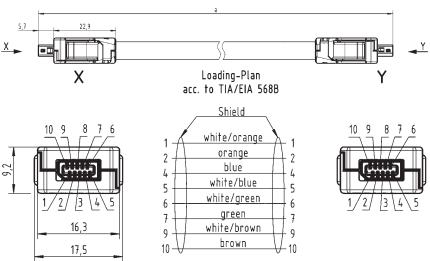
Other cable lengths on request!

Identification	Cable length	Part number	Drawing (dimensions in mm)
----------------	--------------	-------------	-------------------------------

HARTING ix Industrial®,
Copper cable (round),
Pre-assembled on both sides



0.2 m	09 48 262 6749 002
0.3 m	09 48 262 6749 003
0.4 m	09 48 262 6749 004
0.5 m	09 48 262 6749 005
0.7 m	09 48 262 6749 007
1 m	09 48 262 6749 010
1.5 m	09 48 262 6749 015
2 m	09 48 262 6749 020
2.5 m	09 48 262 6749 025
3 m	09 48 262 6749 030
5 m	09 48 262 6749 050
7.5 m	09 48 262 6749 075
10 m	09 48 262 6749 100



10x AWG 26
HARTING ix Industrial® Type B
HARTING ix Industrial® Type B

Cable



Features

- Miniaturised interface for signals and bus systems in acc. to IEC 61076-3-124 type B, suitable for industrial use
- Robust industrial design
- 360° shielding
- 5000 mating cycles
- Flexible, space saving

Technical characteristics

Number of cores	10
Core structure	10x AWG 26
Connector 1	HARTING ix Industrial®, Type B
Connector 2	HARTING ix Industrial®, Type B
Rated current	1.5 A
Rated voltage	50 V AC, 60 V DC
Limiting temperature	-30 ... +80 °C, -40 ... +80 °C
Material (cable)	PVC, PUR (polyurethane)
Colour (cable)	Grey

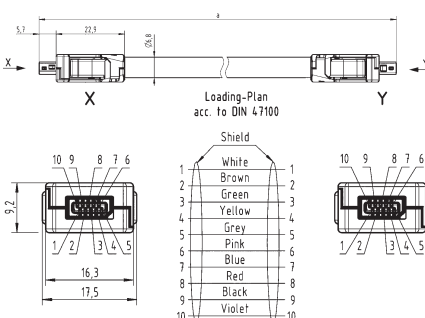
Specifications and approvals

IEC 61076-3-124



Details

Other cable lengths on request!

Identification	Cable length	Part number	Drawing (dimensions in mm)
HARTING ix Industrial®, Copper cable (round), Pre-assembled on both sides, PVC, -30 °C ... +80 °C	0.2 m 0.3 m 0.4 m 0.5 m 0.7 m 1 m 1.5 m 2 m 2.5 m 3 m 5 m 7.5 m 10 m	33 48 111 1A20 002 33 48 111 1A20 003 33 48 111 1A20 004 33 48 111 1A20 005 33 48 111 1A20 007 33 48 111 1A20 010 33 48 111 1A20 015 33 48 111 1A20 020 33 48 111 1A20 025 33 48 111 1A20 030 33 48 111 1A20 050 33 48 111 1A20 075 33 48 111 1A20 100	
HARTING ix Industrial®, Copper cable (round), Pre-assembled on both sides, PUR (polyurethane), -40 °C ... +80 °C	0.2 m 0.3 m 0.4 m 0.5 m 0.7 m 1 m 1.5 m 2 m 2.5 m 3 m 5 m 7.5 m 10 m	33 48 111 1A21 002 33 48 111 1A21 003 33 48 111 1A21 004 33 48 111 1A21 005 33 48 111 1A21 007 33 48 111 1A21 010 33 48 111 1A21 015 33 48 111 1A21 020 33 48 111 1A21 025 33 48 111 1A21 030 33 48 111 1A21 050 33 48 111 1A21 075 33 48 111 1A21 100	