

PROTECTION PRODUCTS - μClamp®

Description

μClamp® TVS diodes are designed to protect sensitive electronics from damage or latch-up due to ESD. They are designed to replace 0201 size multilayer varistors (MLVs) in portable applications such as cell phones, notebook computers, and other portable electronics. They feature large cross-sectional area junctions for conducting high transient currents. This device offers desirable characteristics for board level protection including fast response time, low operating and clamping voltage, and no device degradation.

μClamp®3321ZA features extremely good ESD protection characteristics highlighted by low typical dynamic resistance of 0.33 Ohms, low peak ESD clamping voltage, and high ESD withstand voltage (+/-15kV contact per IEC 61000-4-2). Low maximum capacitance (5pF at VR=0V) minimizes loading on sensitive circuits. Each device will protect one data line operating at 3.3 Volts. μClamp3321ZA is in a 2-pin SLP0603P2X3F package. It measures 0.6 x 0.3 mm with a nominal height of only 0.25mm. Leads are finished with NiAu. The small package gives the designer the flexibility to protect single lines in applications where arrays are not practical. The combination of small size and high ESD surge capability makes them ideal for use in portable applications such as cellular phones, digital cameras, and tablet PC's.

Features

- ◆ High ESD withstand Voltage: +/-15kV (Contact) and +/- 17kV (Air) per IEC 61000-4-2
- ◆ Ultra-small package
- ◆ Protects one data line
- ◆ Low ESD clamping voltage
- ◆ Working voltage: 3.3V
- ◆ Low capacitance: 5pF maximum
- ◆ Low leakage current
- ◆ Extremely low dynamic resistance: 0.33 Ohms (Typ)
- ◆ Solid-state silicon-avalanche technology

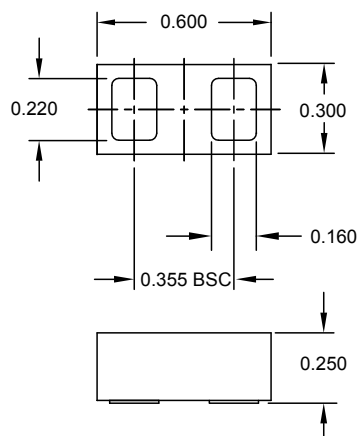
Mechanical Characteristics

- ◆ SLP0603P2X3F package
- ◆ Pb-Free, Halogen Free, RoHS/WEEE Compliant
- ◆ Nominal Dimensions: 0.6 x 0.3 x 0.25 mm
- ◆ Lead Finish: NiAu
- ◆ Marking: Marking code
- ◆ Packaging: Tape and Reel

Applications

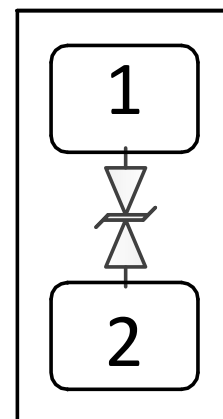
- ◆ Cellular Handsets & Accessories
- ◆ Notebook Computers
- ◆ Tablet PC
- ◆ Portable Instrumentation
- ◆ Peripherals

Package Dimensions



Nominal Dimensions in mm

Schematic & Pin Configuration



SLP0603P2X3F (Bottom View)

PROTECTION PRODUCTS

Absolute Maximum Ratings

Rating	Symbol	Value	Units
Peak Pulse Power (tp = 8/20μs)	P _{PK}	40	W
Peak Pulse Current (tp = 8/20μs)	I _{PP}	4	A
ESD per IEC 61000-4-2 (Air) ⁽¹⁾ ESD per IEC 61000-4-2 (Contact) ⁽¹⁾	V _{ESD}	±17 ±15	kV
Operating Temperature	T _J	-40 to +125	°C
Storage Temperature	T _{STG}	-55 to +150	°C

Electrical Characteristics (T=25°C unless otherwise specified)

Parameter	Symbol	Conditions	Min.	Typ.	Max.	Units
Reverse Stand-Off Voltage	V _{RWM}	Pin 1 to 2 or Pin 2 to 1			3.3	V
Punch-Through Voltage	V _{PT}	I _{PT} = 50μA Pin 1 to 2 or Pin 2 to 1	3.7	4.0	4.7	V
Reverse Leakage Current	I _R	V _{RWM} = 3.3V Pin 1 to 2 or Pin 2 to 1		1	50	nA
Clamping Voltage	V _C	I _{PP} = 4A, tp = 8/20μs			8.5	V
ESD Clamping Voltage ²	V _C	I _{PP} = 4A tp = 0.2/100ns		6.5		V
ESD Clamping Voltage ²	V _C	I _{PP} = 16A tp = 0.2/100ns		10.5		V
Dynamic Resistance ^{2, 3}	R _{DYN}	tp = 100ns		0.33		Ohms
Junction Capacitance	C _J	I/O pin to GND f = 1MHz V _R = 0V		4.2	5	pF

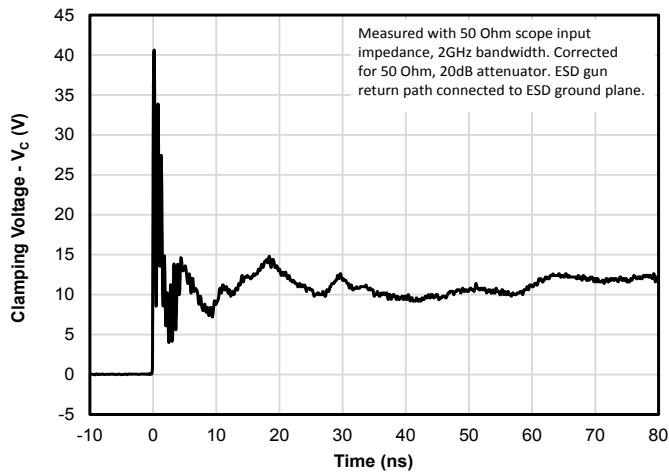
Notes

1) Measured with a 20dB attenuator, 50 Ohm scope input impedance, 2GHz bandwidth. ESD gun return path connected to ESD ground plane.

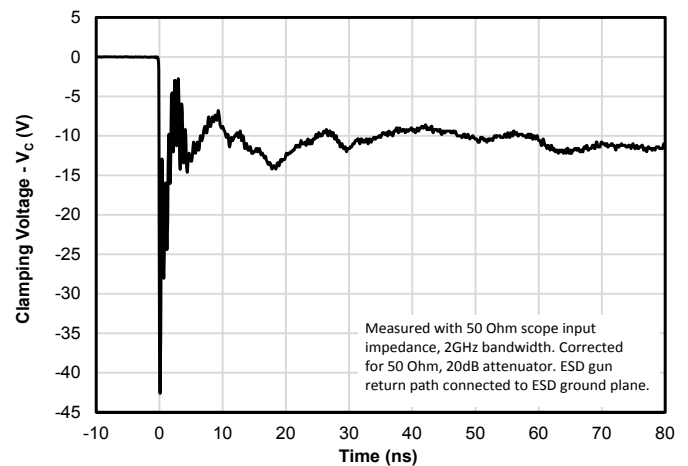
2) Transmission Line Pulse Test (TLP) Settings: tp = 100ns, tr = 0.2ns, I_{TLP} and V_{TLP} averaging window: t1 = 70ns to t2 = 90ns.

3) Dynamic resistance calculated from I_{TLP} = 4A to I_{TLP} = 16A

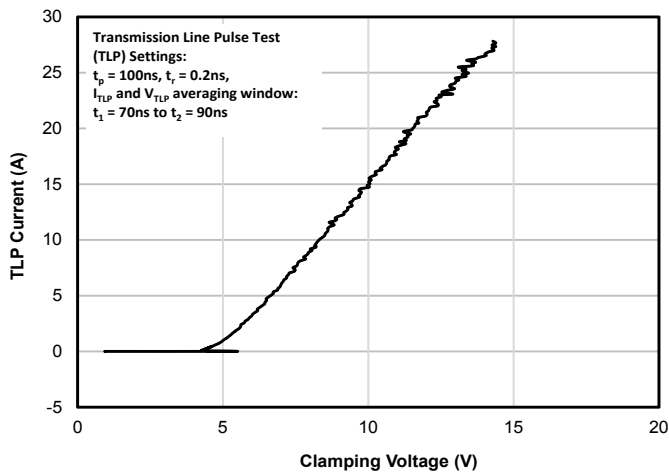
ESD Clamping (8kV Contact per IEC 61000-4-2)



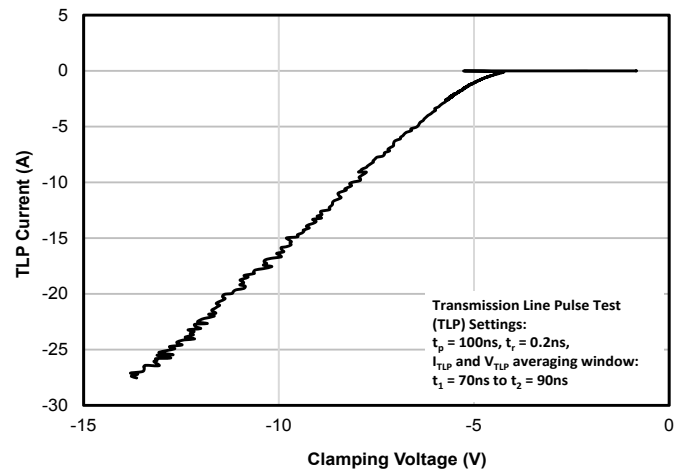
ESD Clamping (-8kV Contact per IEC 61000-4-2)



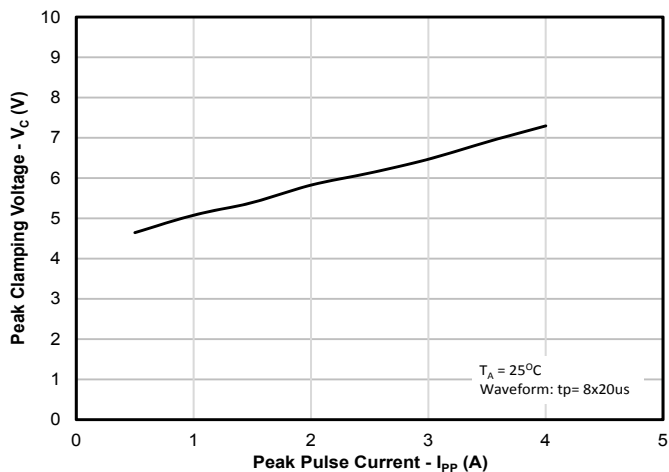
TLP Characteristic (Positive Pulse)



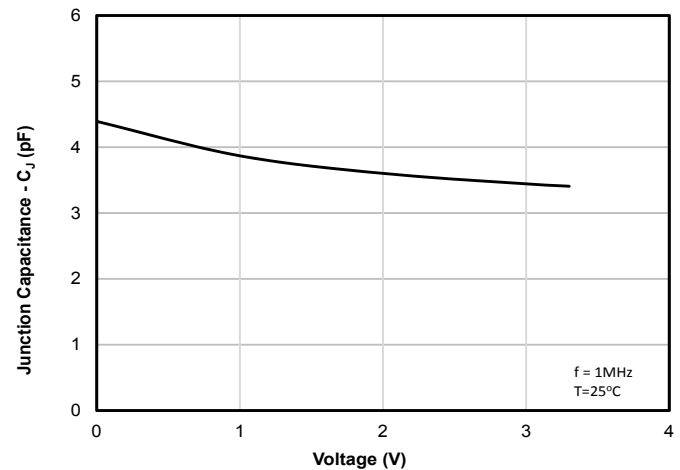
TLP Characteristic (Negative Pulse)



Clamping Voltage vs. Peak Pulse Current ($t_p=8/20\mu\text{s}$)



Junction Capacitance vs. Reverse Voltage



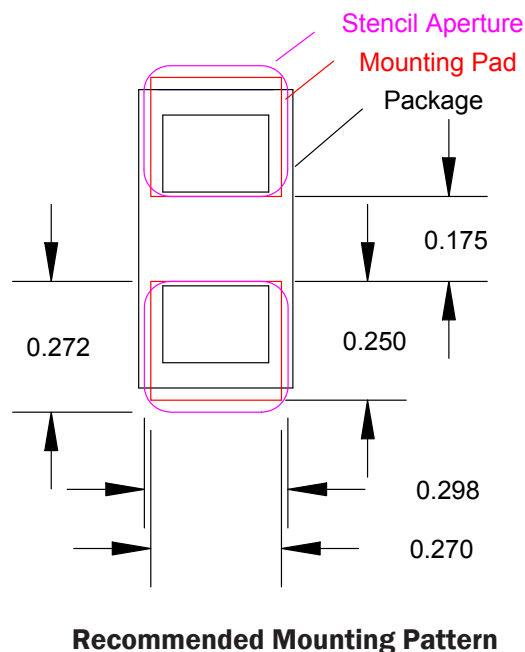
PROTECTION PRODUCTS

Applications Information

Assembly Guidelines

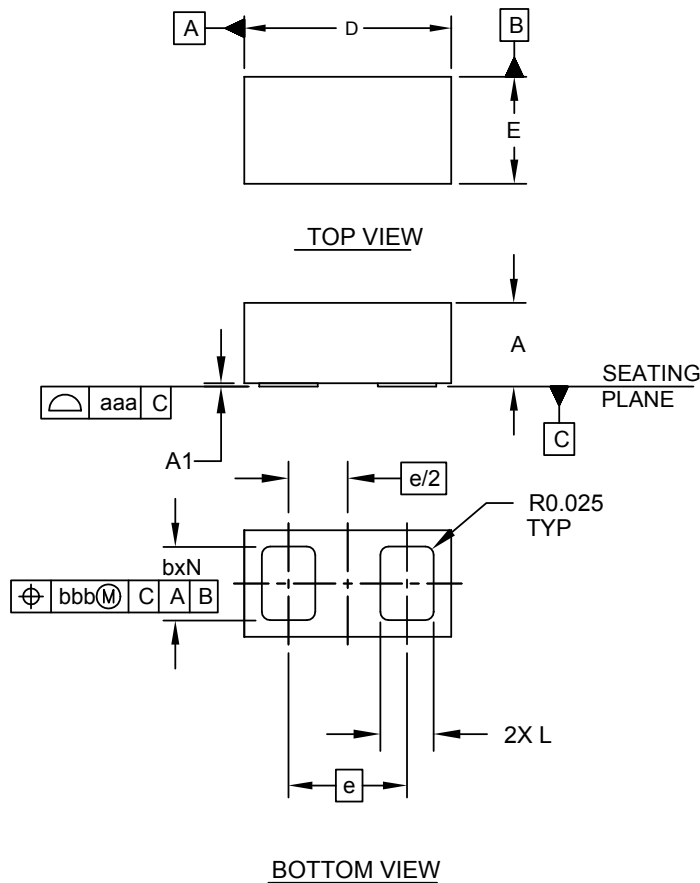
The small size of this device means that some care must be taken during the mounting process to insure reliable solder joint. The table below provides Semtech's recommended assembly guidelines for mounting this device. The figure at the right details Semtech's recommended aperture based on the below recommendations. Note that these are only recommendations and should serve only as a starting point for design since there are many factors that affect the assembly process. The exact manufacturing parameters will require some experimentation to get the desired solder application.

Assembly Parameter	Recommendation
Solder Stencil Design	Laser cut, Electro-polished
Aperture shape	Rectangular with rounded corners
Solder Stencil Thickness	0.100 mm (0.004")
Solder Paste Type	Type 4 size sphere or smaller
Solder Reflow Profile	Per JEDEC J-STD-020
PCB Solder Pad Design	Non-Solder mask defined
PCB Pad Finish	OSP OR NiAu



PROTECTION PRODUCTS

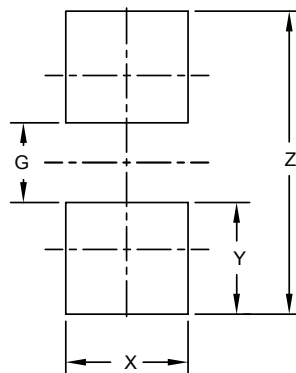
Outline Drawing - SLP0603P2X3F



NOTES:

1. CONTROLLING DIMENSIONS ARE IN MILLIMETERS (ANGLES IN DEGREES).

Land Pattern - SLP0603P2X3F



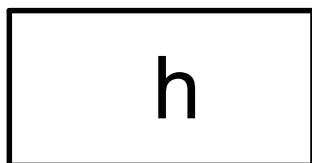
DIMENSIONS	
DIM	MILLIMETERS
G	0.177
X	0.272
Y	0.247
Z	0.671

NOTES:

- CONTROLLING DIMENSIONS ARE IN MILLIMETERS (ANGLES IN DEGREES).
- THIS LAND PATTERN IS FOR REFERENCE PURPOSES ONLY.
- CONSULT YOUR MANUFACTURING GROUP TO ENSURE YOUR COMPANY'S MANUFACTURING GUIDELINES ARE MET.

PROTECTION PRODUCTS

Marking



Notes: Device is Electrically Symmetrical

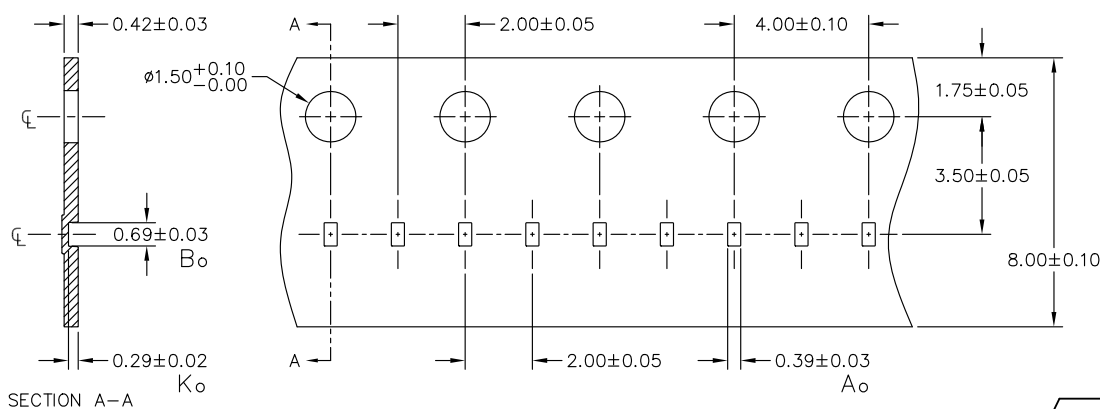
Ordering Information

Part Number	Qty per Reel	Reel Size
μClamp3321ZATFT	15000	7"

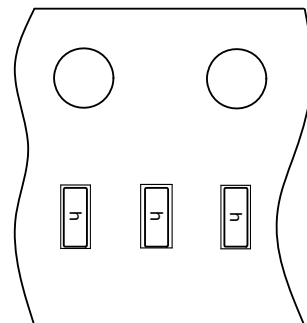
Notes:

1) MicroClamp, uClamp and μClamp are trademarks of Semtech Corporation.

Tape and Reel Specification



NOTES: ALL DIMENSIONS IN MILLIMETERS UNLESS OTHERWISE SPECIFIED.



Contact Information for Semtech International AG

Taiwan Branch	Tel: 886-2-2748-3380 Fax: 886-2-2748-3390	Japan (Tokyo) Office	Tel: 81-3-5719-7560 Fax: 81-3-5719-7561
Korea Branch	Tel: 82-2-527-4377 Fax: 82-2-527-4376	Semtech Limited (U.K.)	Tel: 44-1794-527-600 Fax: 44-1794-527-601
Shanghai Office	Tel: 86-21-6391-0830 Fax: 86-21-6391-0831	Semtech France SARL	Tel: 33-(0)169-28-22-00 Fax: 33-(0)169-28-12-98
Japan (Osaka) Office	Tel: 81-6-6347-6570 Fax: 81-6-6347-6571	Semtech Germany GmbH	Tel: 49-(0)8161-140-123 Fax: 49-(0)8161-140-124

Semtech International AG is a wholly-owned subsidiary of Semtech Corporation, which has its headquarters in the U.S.A.